



ALUFENCE SYSTEMS



art of trust. 



art of trust .

Akos Smart Aluminum
Railing Systems



AKOS® is one of the biggest Aluminium System manufacturer From Turkey who is the fastest-growing in world markets since 2006.

AKOS Smart Aluminium Railing Systems has been recognized in five continents and dozens of countries and have been accredited by international certifications.

One of the main key factors that ensure company's growth with fast and solid steps is its quality consistency.

Each stage of the production following to rules according to the ISO 9001:2015 and CE necessities.

The AKOS brand is completely focused on the innovation and engineering. Akos creates new designs for every market and every culture with its professionalism.

Today AKOS Systems, are an indispensable part of artistic and modern designs with the priority of environmental awareness and life safety.

AKOS develops its systems with the culture below:

- High Efficiency
- High Quality
- Flexible and Special Mass Productivity
- Wide Range
- Capable Design



high

quality materials with a modern
design and superior finishing.

index page number

06

ALUFENCE
SERIES

24

ALUPORCH
SERIES

28

ALUGUILLO
SERIES

43

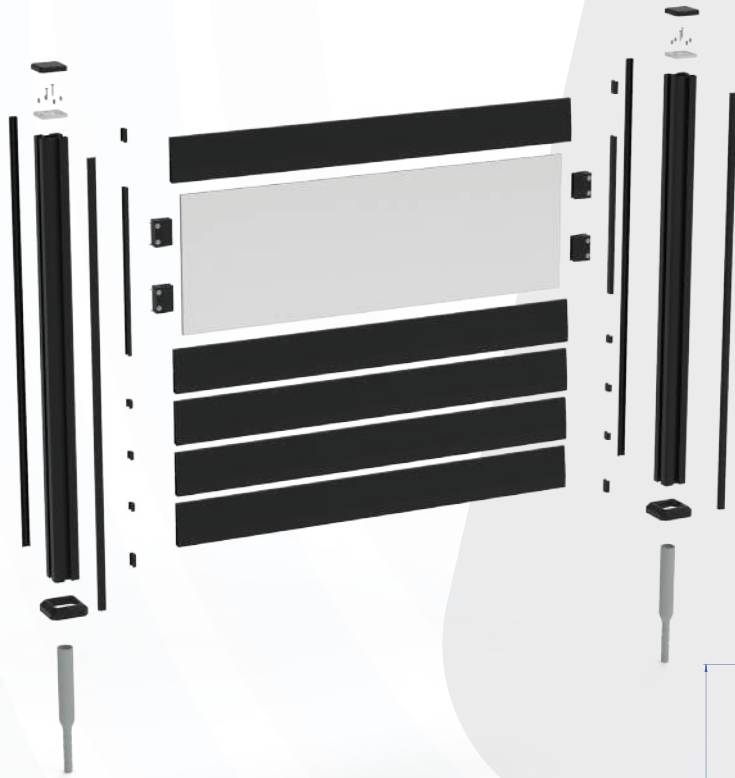
ALUSLIDER
SERIES

60

ALUBREAK
SERIES

64

AKOS
GLASS

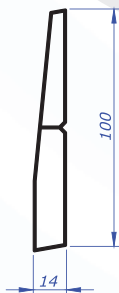


Option A

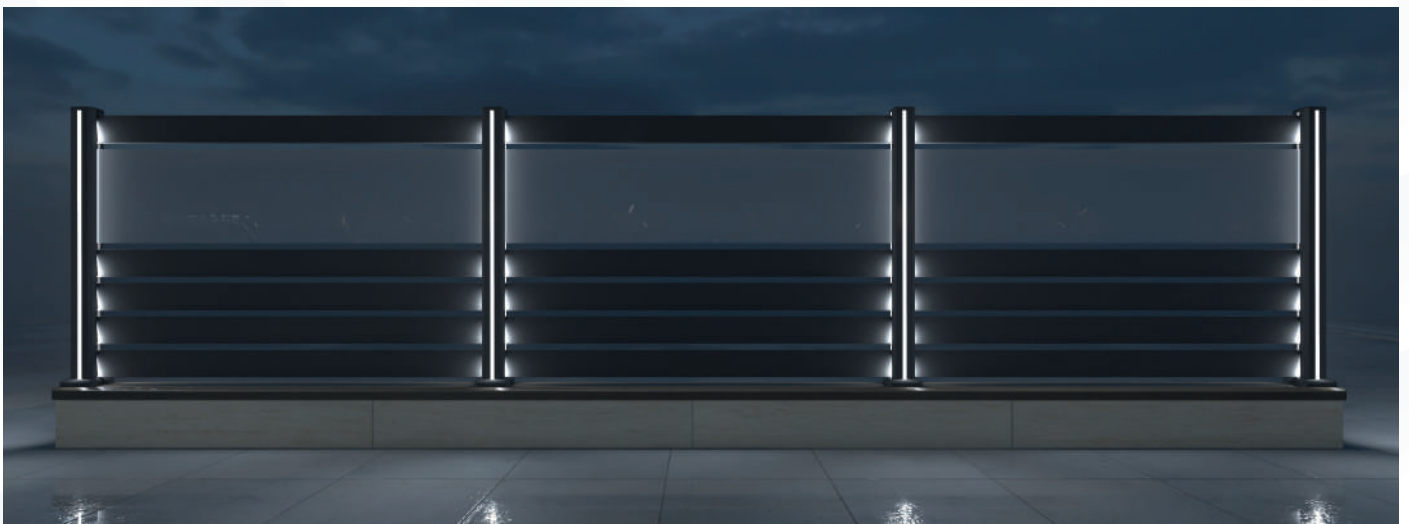
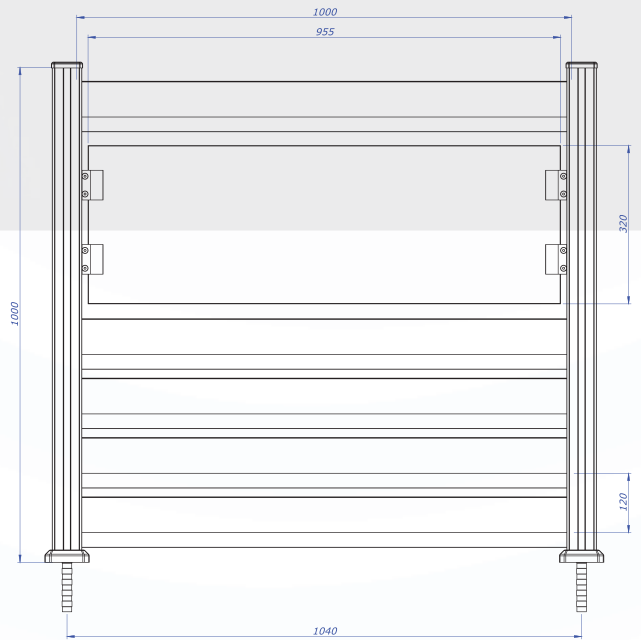
Complete Siding

Option B

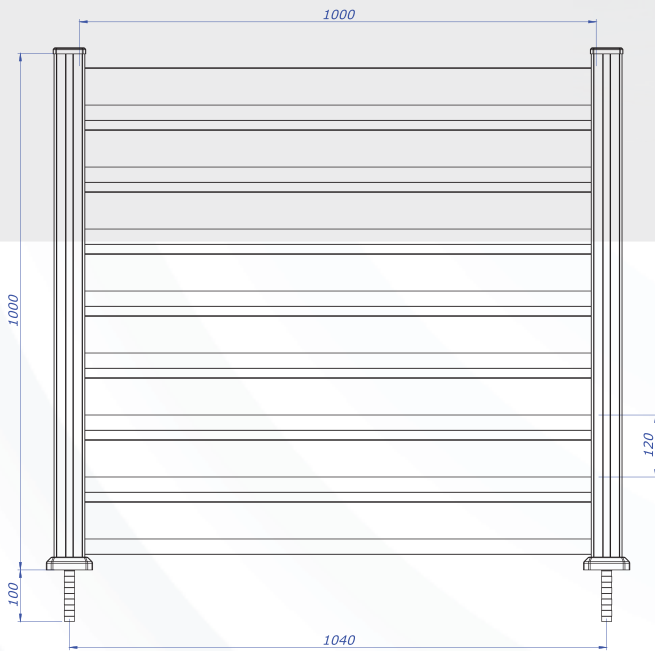
w/Glass 4+4



■ **6207**
Partition Siding Fence
Profile-B Meters



ALUFENCE
SERIES
NEVADA



■ **6208**
Z Shape Partition Fence
Profile-6 Meters

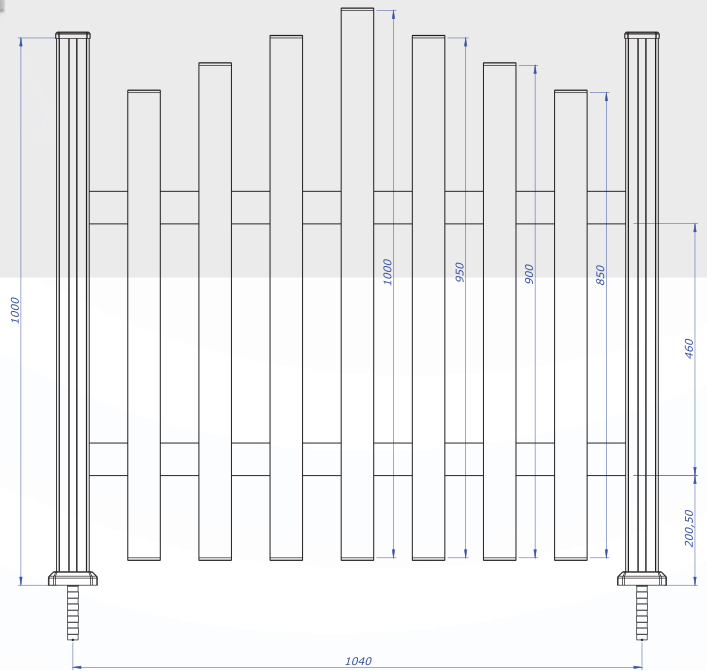
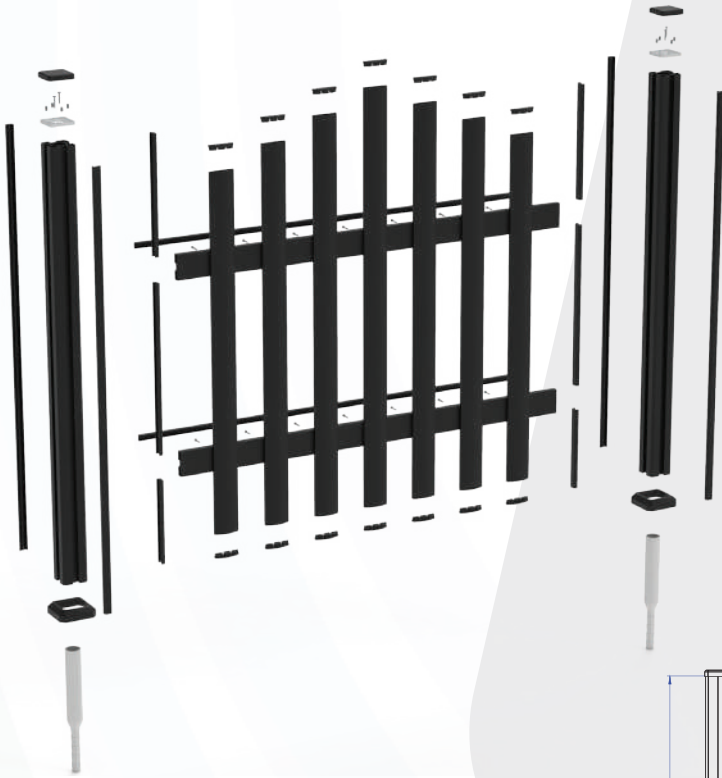
Option A

Complete Siding

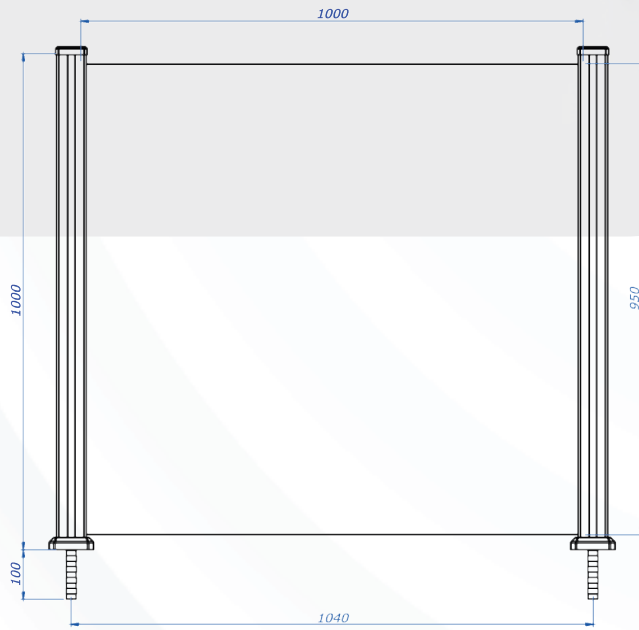
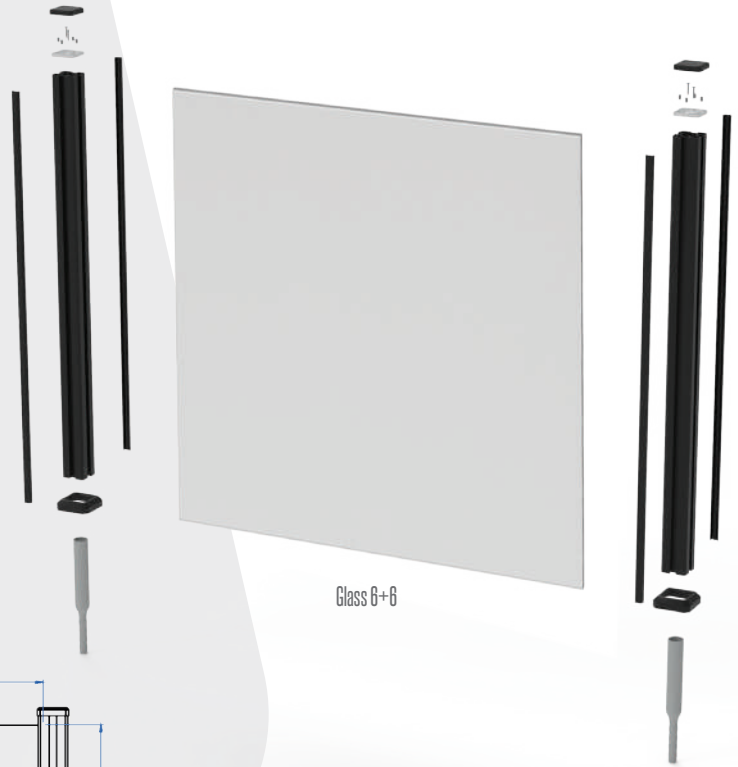
Option B

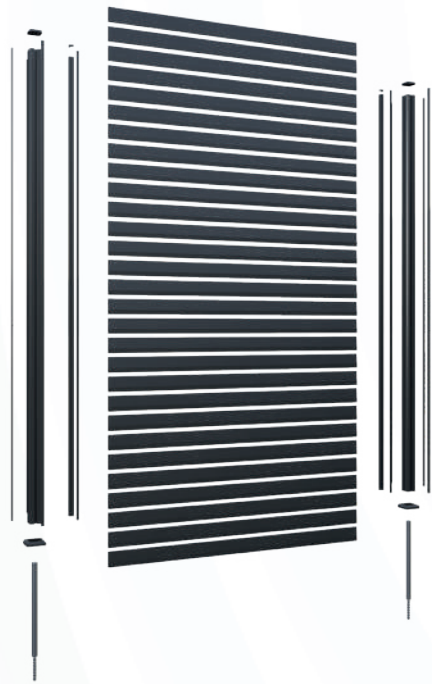
Wind Break Gaps



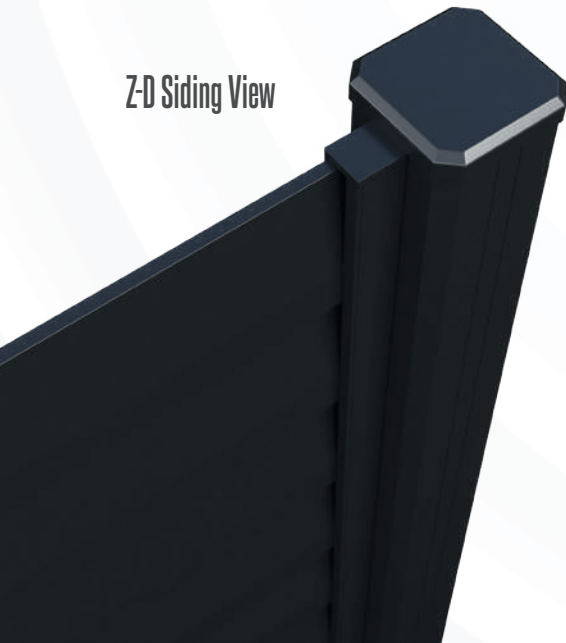
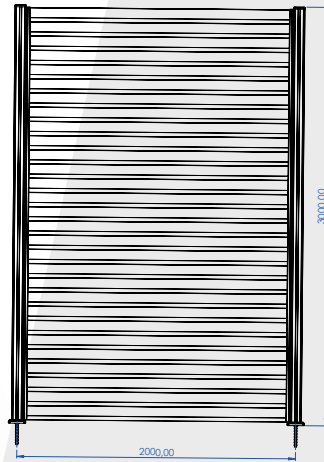


ALUFENCE
SERIES
NICE

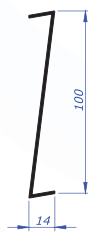




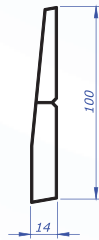
Z-D Siding View



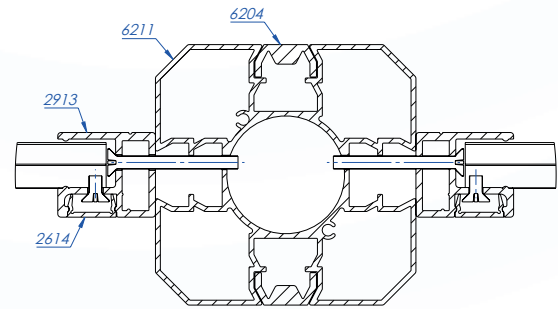
Wall Partition View



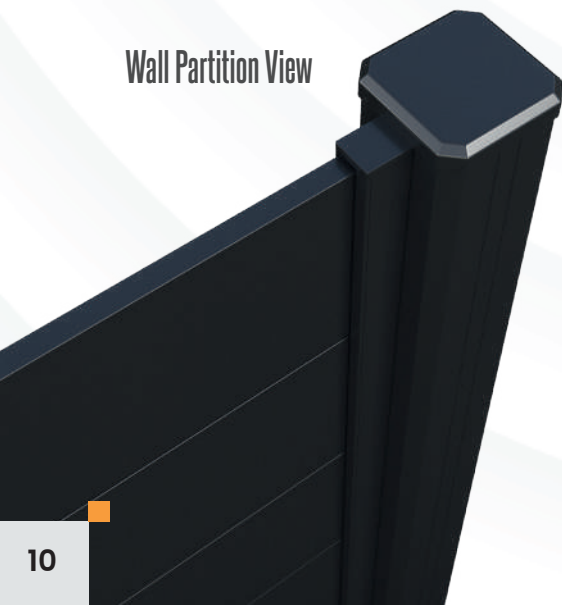
■ **6208**
Z Shape Partition Fence
Profile-6 Meters



■ **6207**
Partition Siding Fence
Profile-6 Meters



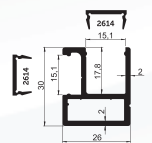
■ **6211**
Adapter Application



■ **6214**
Partition Fence Box
6 Meters

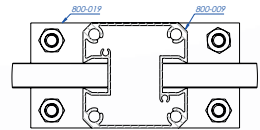
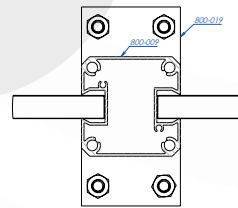


■ **800-018**
Fence Post Anchor Ø36 - 75 cm



■ **2913 Adapter Profile**
6 Meters

ALUFENCE
SERIES
TOP PARAPHET

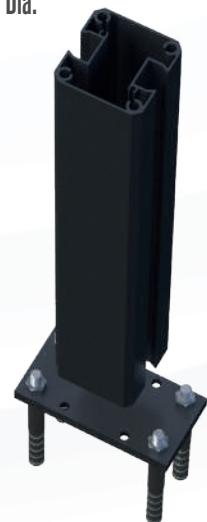


800-009
Fence Post Profile 60*60-6 Meters

800-009
Fence Post Profile 60*60-6 Meters



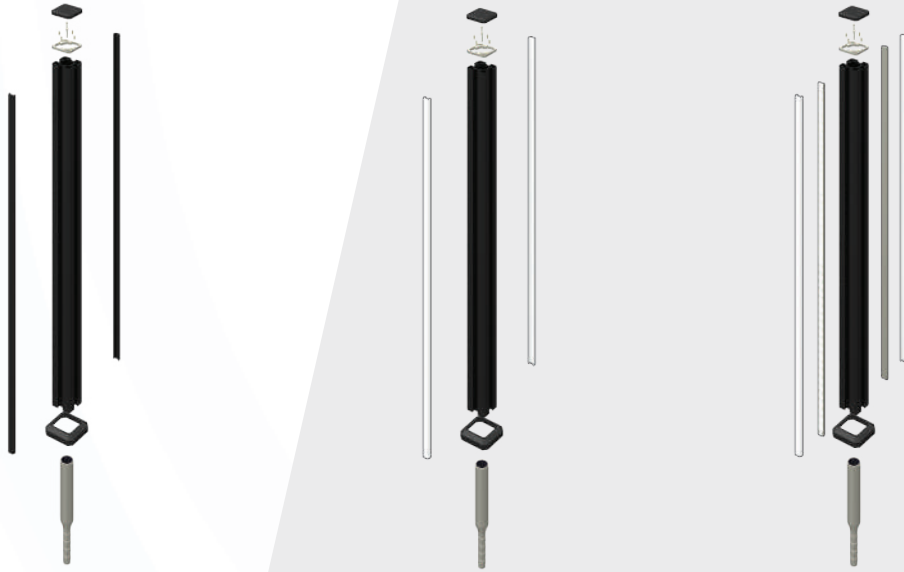
Flange Application Dia.



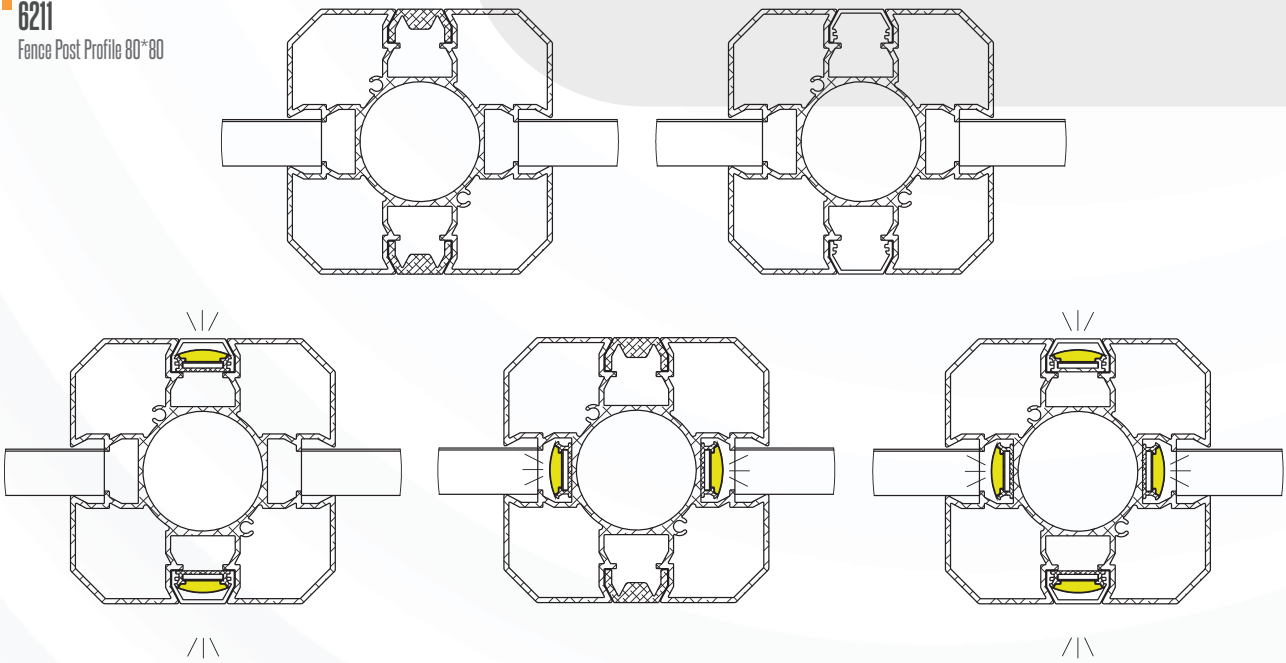
Wide Operate

Narrow Operate

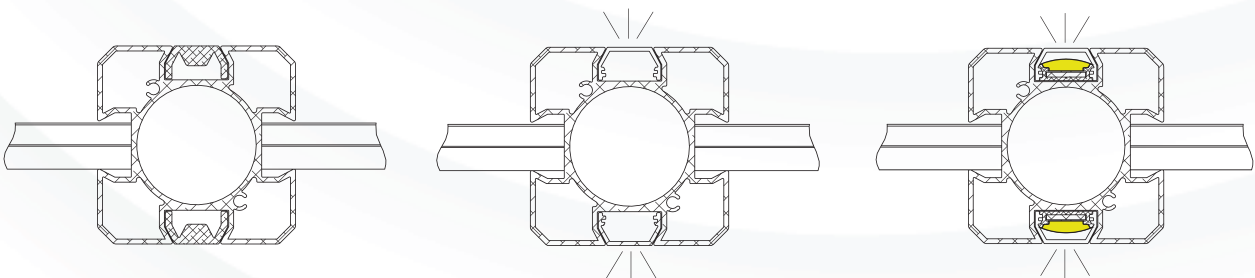
Post Usage Types of Alufence System



6211
Fence Post Profile 80*80

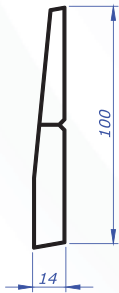


6205
Fence Post Profile 60*60





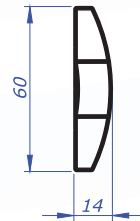
Color your world with *Alufence* Systems!



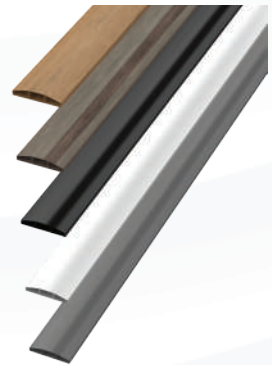
■ **6207**
Partition Siding Fence Profile-6 Meters

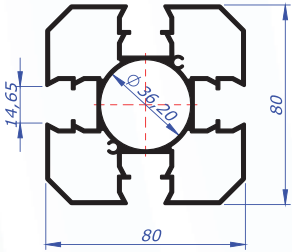


■ **6208**
Z Shape Partition Fence Profile-6 Meters

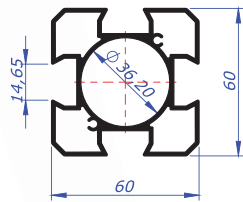


■ **6210**
Vertical Partition Fence Profile-6 Meters

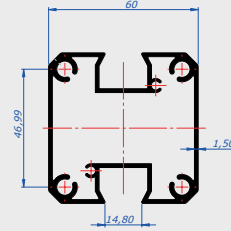




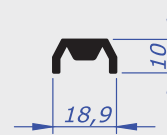
■ **6211**
Fence Post Profile 80*80-6 Meters



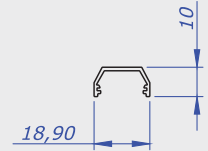
■ **6205**
Fence Post Profile 60*60-6 Meters



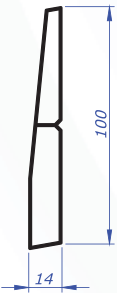
■ **800-009**
Fence Post Profile 60*60-6 Meters



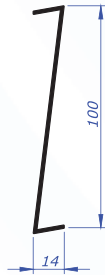
■ **6204**
Fence Profile Cover
6 Meters



■ **800-010**
Polycarbonate Cover
6 Meters



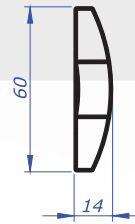
■ **6207**
Partition Siding Fence
Profile-6 Meters



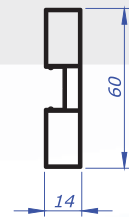
■ **6208**
Z Shape Partition Fence
Profile-6 Meters



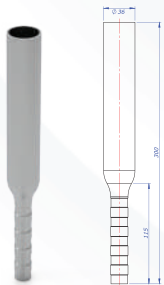
■ **6214**
Partition Fence Box
6 Meters



■ **6210**
360-301 Elliptic
60x25 Wall Flange



■ **6206**
Elliptic 60x25 Plug



■ **800-016**
Fence Post Anchor Ø36



■ **500-065**
M12x150mm Concrete Screw



■ **500-064**
M10 Clips Dowel Screw 180mm



■ **500-014**
8 Metric Anchor



■ **500-019**
Bolt M8

ALUFENCE
SERIES



■ **800-015**
Post Ground Flange 80*80



■ **800-014**
Post Ground Flange 60*60



■ **800-013**
Post Caps 80*80



■ **800-012**
Post Caps 60*60



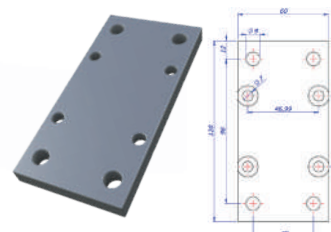
■ **800-009**
Fence Profile Top Plate 80*80



■ **800-006**
Fence Profile Top Plate 60*60



■ **800-017**
Elliptic 60x25 Plug Aluminium



■ **800-019**
Parapet Flange



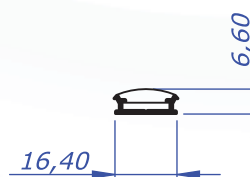
■ **500-066**
Marine Sealant



■ **100-035**
High Tack Adhesive



■ **100-036**
Led Strip Light 5 Meters



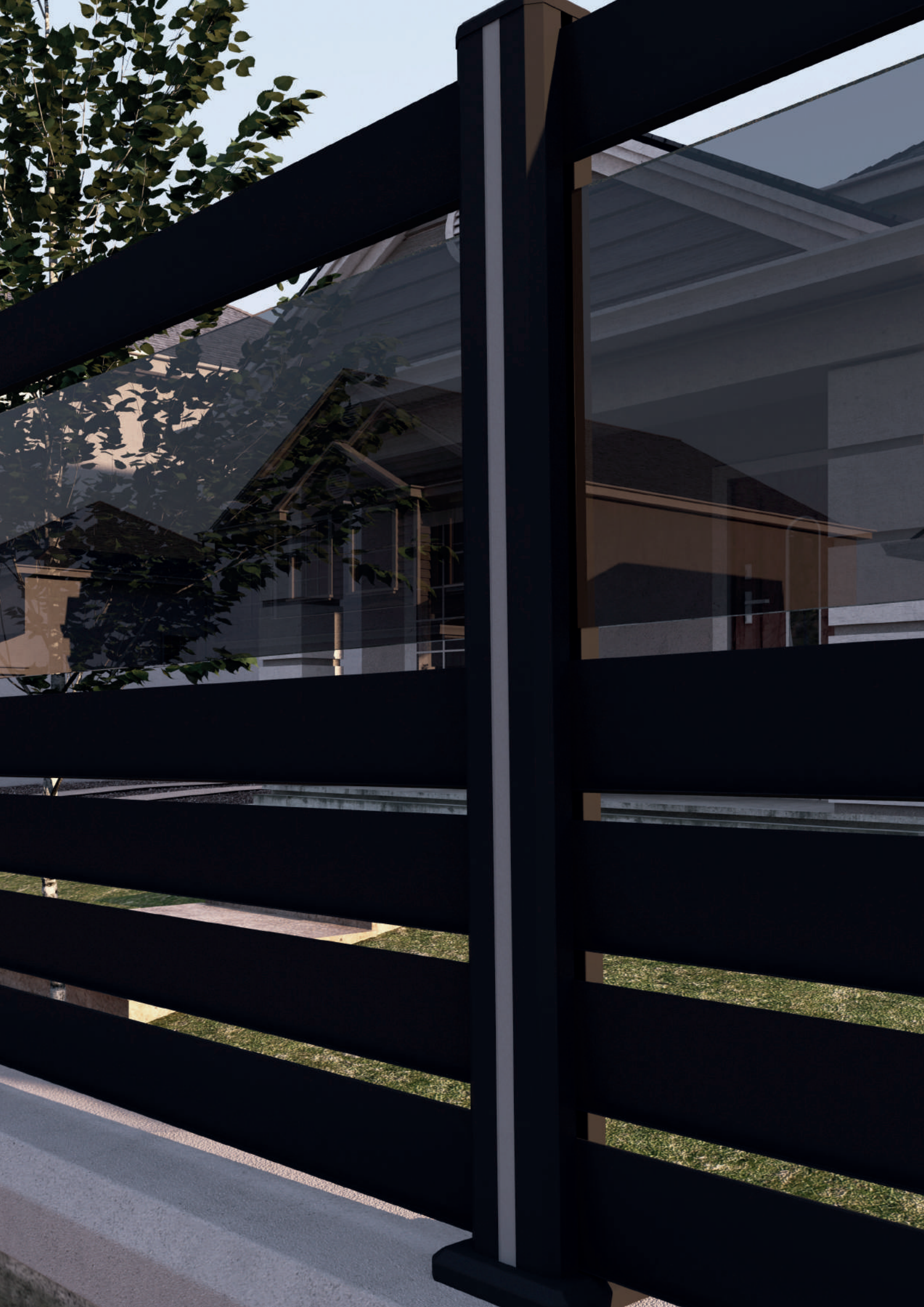
■ **800-011**
Led Lighting Profile 6 Meters



■ **200-904**
Glass Holder for Square

ALUFENCE
Arvada





ALUFENCE
Nevada





ALUFENCE
Florida

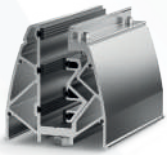




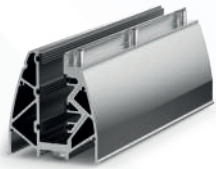




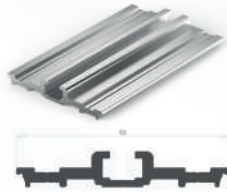
CANOPY SERIES



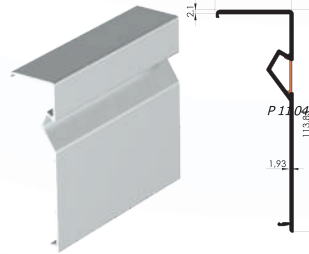
■ **500-101**
Glass Base Set
15 cm



■ **500-102**
Glass Base Set
30 cm



■ **2987**
Base Line Profile
(6 Meters)



■ **6150**
Cover Profile With Led Channel (6 Meters)



■ **2986**
Cover Profile
(6 Meters)



■ **500-118**
Side Caps



■ **500-794**
Plastic Led Cover



■ **100-036**
Led Strip Light
(5 Meters)



■ **500-001**
Rubber

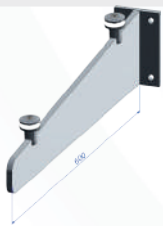
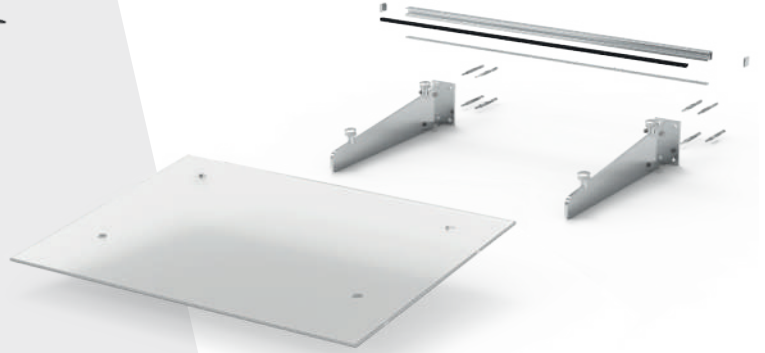


■ **500-014**
8 Metric Anchor
15 cm

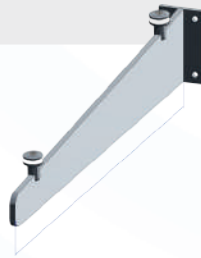


■ **001-054**
M8 Hexagon
Nut

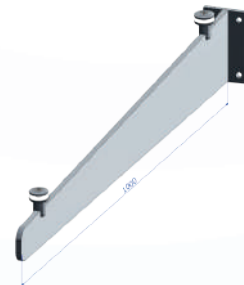
ALUPORCH
SERIES
CANOPY



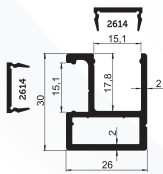
■ **480-001**
Beam (60 cm)



■ **480-002**
Beam (80 cm)



■ **480-003**
Beam (100 cm)



■ **2913**
Holder Profile
(6 Meters)



■ **2614**
Cover Profile
(6 Meters)



■ **500-001**
Wick



■ **500-013**
8 Metric Anchor
10 cm



■ **500-014**
8 Metric Anchor
15 cm



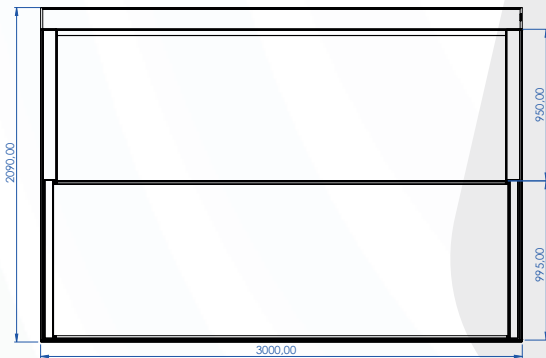
■ **500-019**
Dome Nut M8





GUILLOTIN SERIES

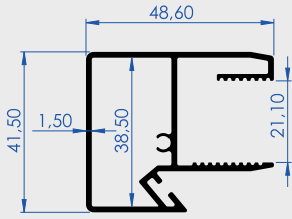
Guillotin Systems upto 200x200cm Places



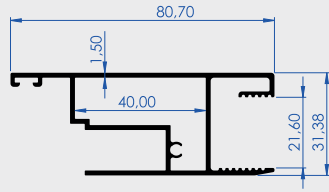
Clean Opening Operation - Step 1



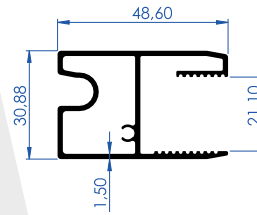
Clean Opening Operation - Step 2



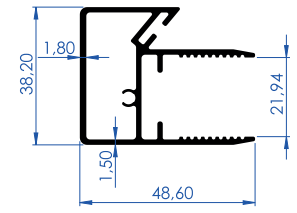
90101
Wing Profile



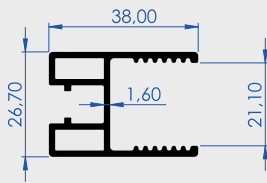
90102
Wing Profile



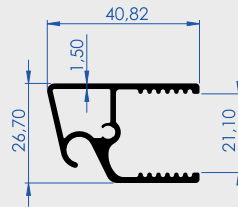
90103
Wing Profile



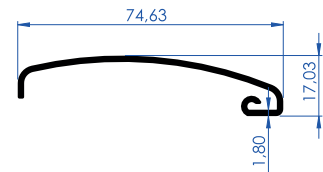
90104
Wing Profile



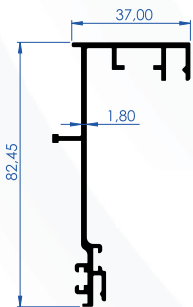
90105
Wing Profile



90106
Wing Profile



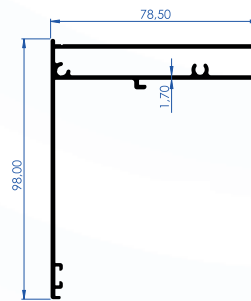
90107
Wing Profile



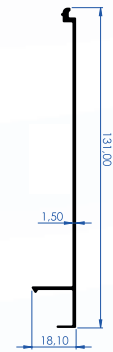
90108
Side Profile



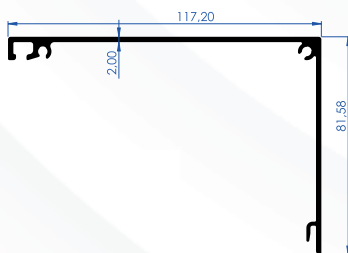
90109
Strut Profile



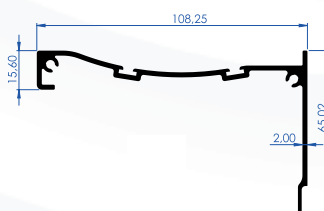
90110
Cover Profile



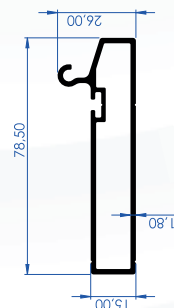
90111
Side Profile



90112
Engine Case

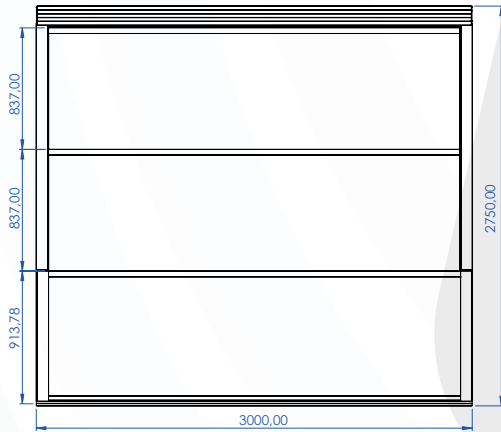


90113
Cover Profile



90114
Holder Profile

Guillotin Systems upto 350x350cm Places

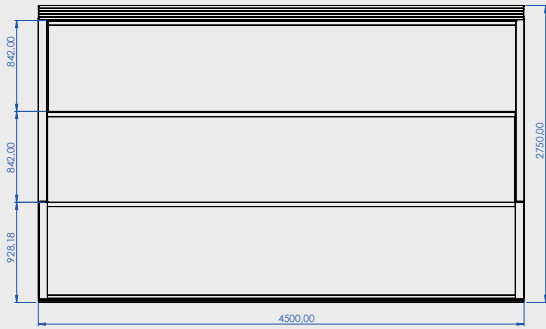


Clean Opening Operation - Step 1

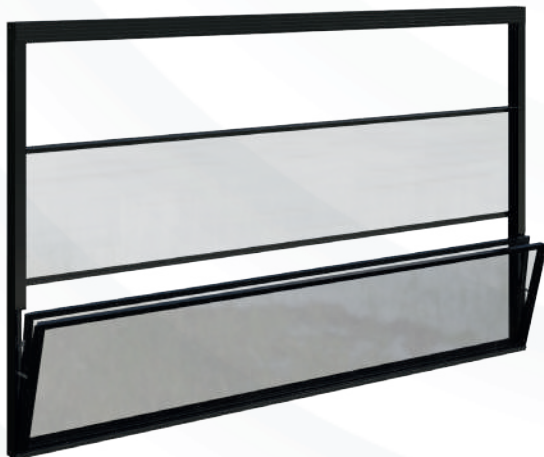


Clean Opening Operation - Step 2

Guillotin Systems more than 350cm Places (Supported)



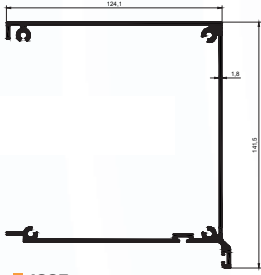
Supported Wing Profiles



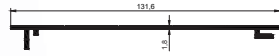
Clean Opening Operation - Step 1



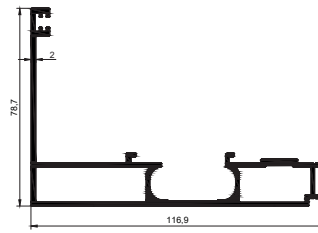
Clean Opening Operation - Step 2



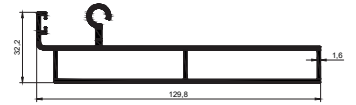
1025
Engine Box



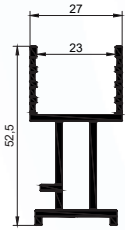
1026
Cover Profile



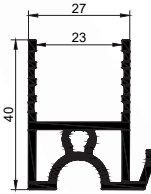
1027
Side Case



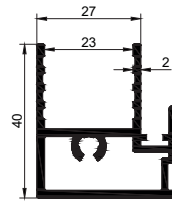
1028
Bottom Wing Profile



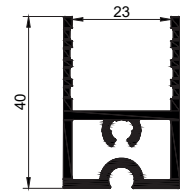
1029
Side Profile



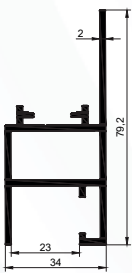
1030
Wing Profile w/outlet



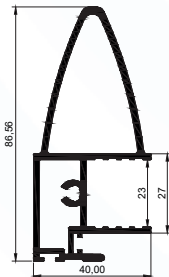
1031
Locker Wing Profile



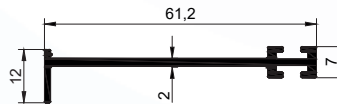
1032
Upper Wing Profile



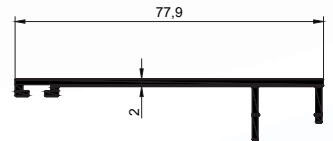
1033
Middle Wing Profile



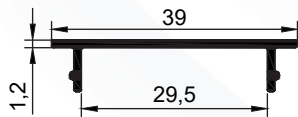
1034
Supported Wing Profile



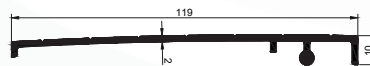
1035
Side Column



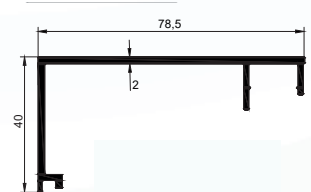
1036
Flat Cover



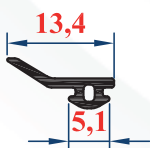
1037
Side Cover



1038
Movable Top Cover



1039
Finishing Profile



600-006
Bottom Wick



600-007
Side Wick



600-008
Rubber Wick



600-009
Brush



AGT 01
Motor

ALUGUILLO
SERIES
AGRS



■ **AGT 02**
Engine Cover



■ **AGT 03**
Polygon Pipe



■ **AGT 04**
Hinge



■ **AGT 05**
Espagnolette



■ **AGT 06**
Hidden Handle



■ **AGT 07**
Steel Arm



■ **AGT 08**
Steel Arm w/Rollers



■ **AGT 09**
Locker



■ **AGT 10**
Bottom Cover
Plastic



■ **AGT 11**
Side Cover Plastic



■ **AGT 12**
Opener Wing Cover
Plastic



■ **AGT 13**
Movable Wing
Cover Plastic



■ **AGT 14**
Side Case Cover
Plastic



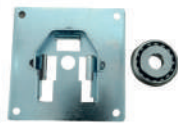
■ **AGT 15**
Supported Wing
Cover Plastic



■ **AGT 16**
Crown



■ **AGT 17**
Chain



■ **AGT 19**
Motor Bearing



■ **AGT 20**
Chain Tensioner



■ **AGT 21**
Belt



■ **AGT 22**
Belt Wheel



■ **AGT 23**
Pipe Cover w/Pin



■ **AGT 24**
Pipe Cover Wheeler

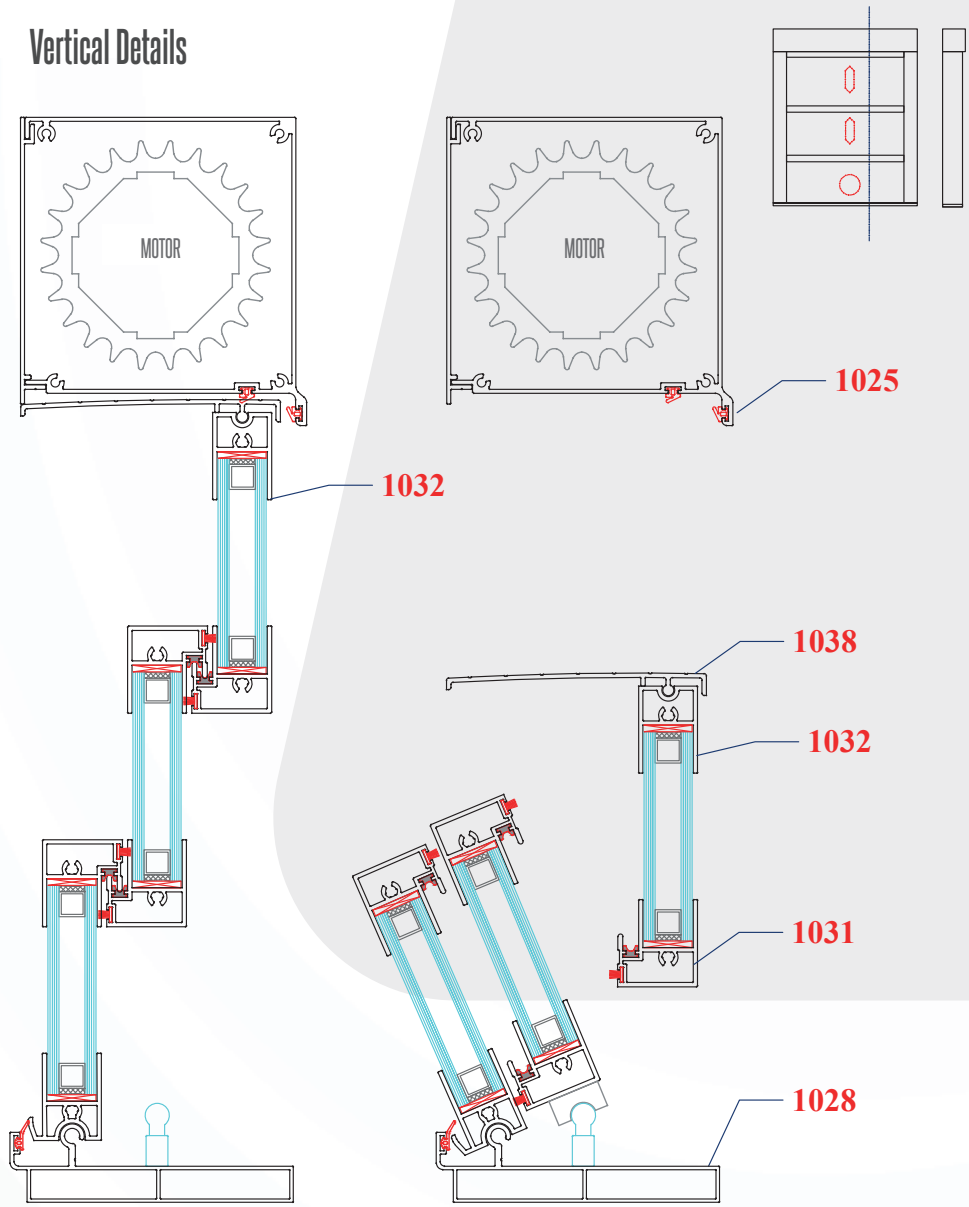


■ **AGT 25**
6 x 80 Allen Screw

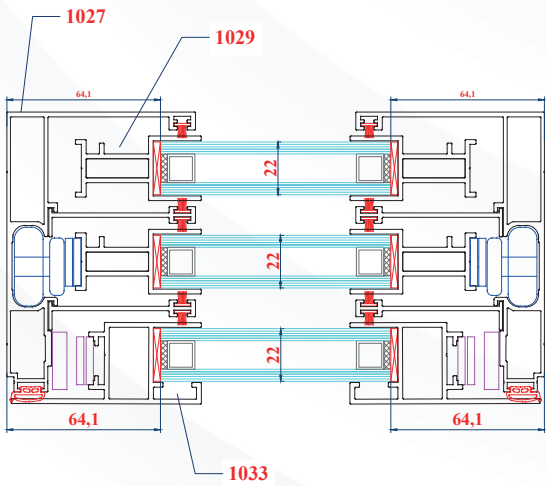
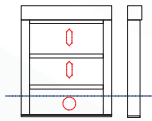


■ **AGT 26**
Hidden Handle

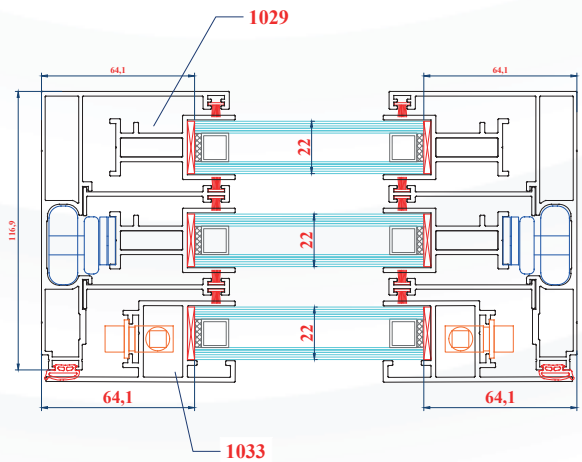
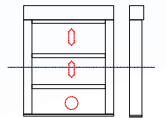
Vertical Details



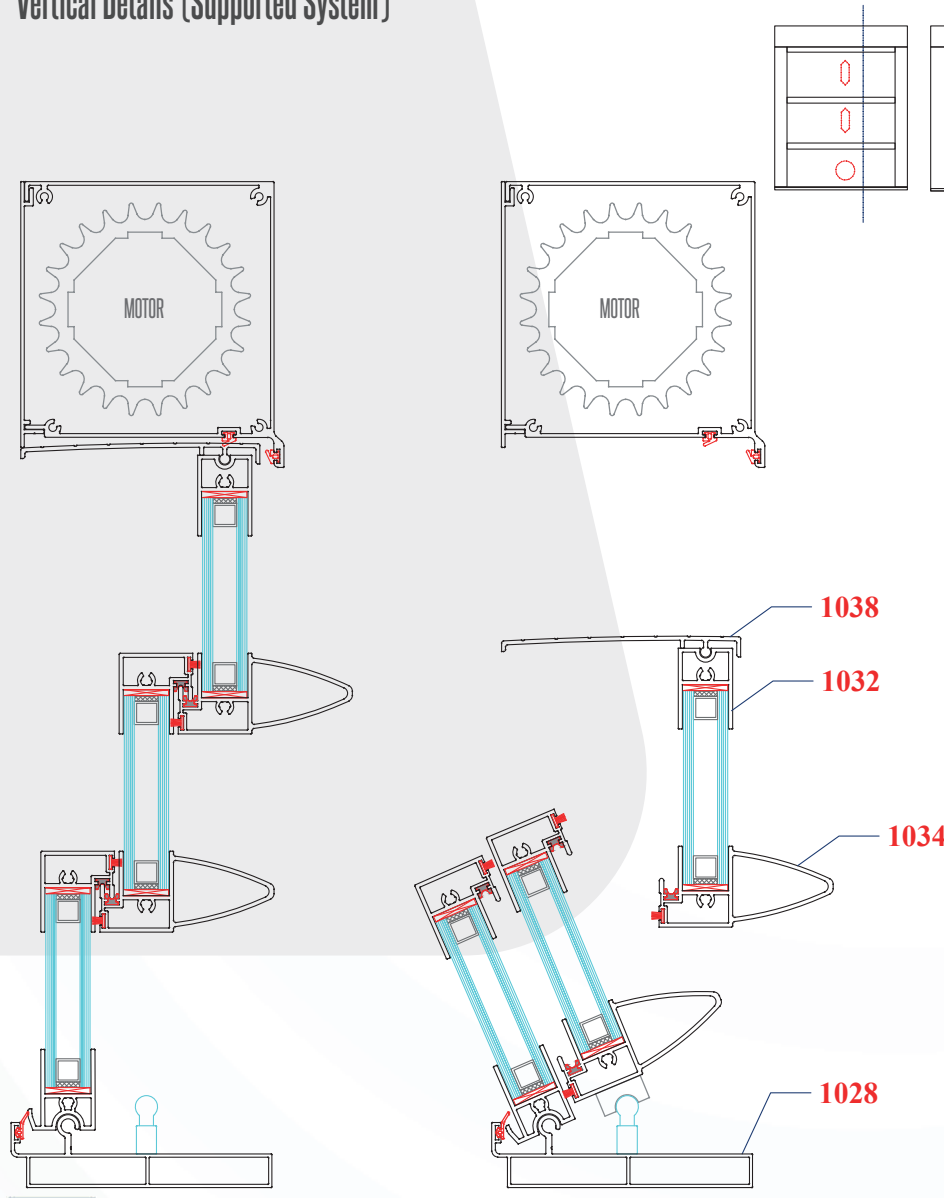
Side Details A:A



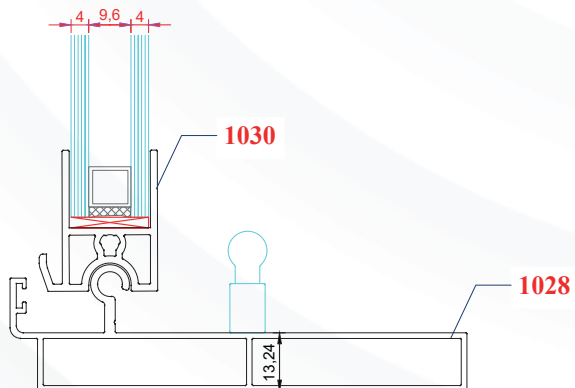
Side Details B:B



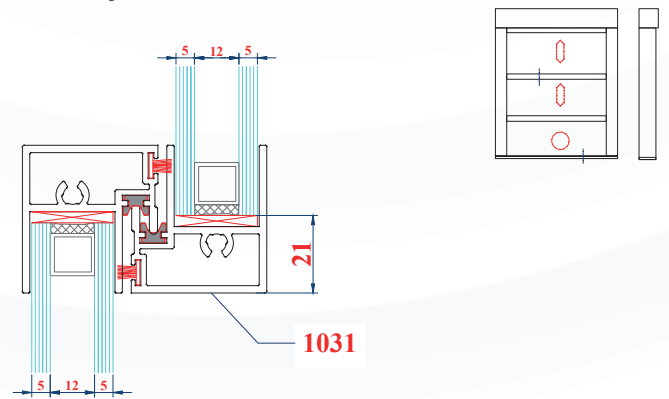
Vertical Details (Supported System)



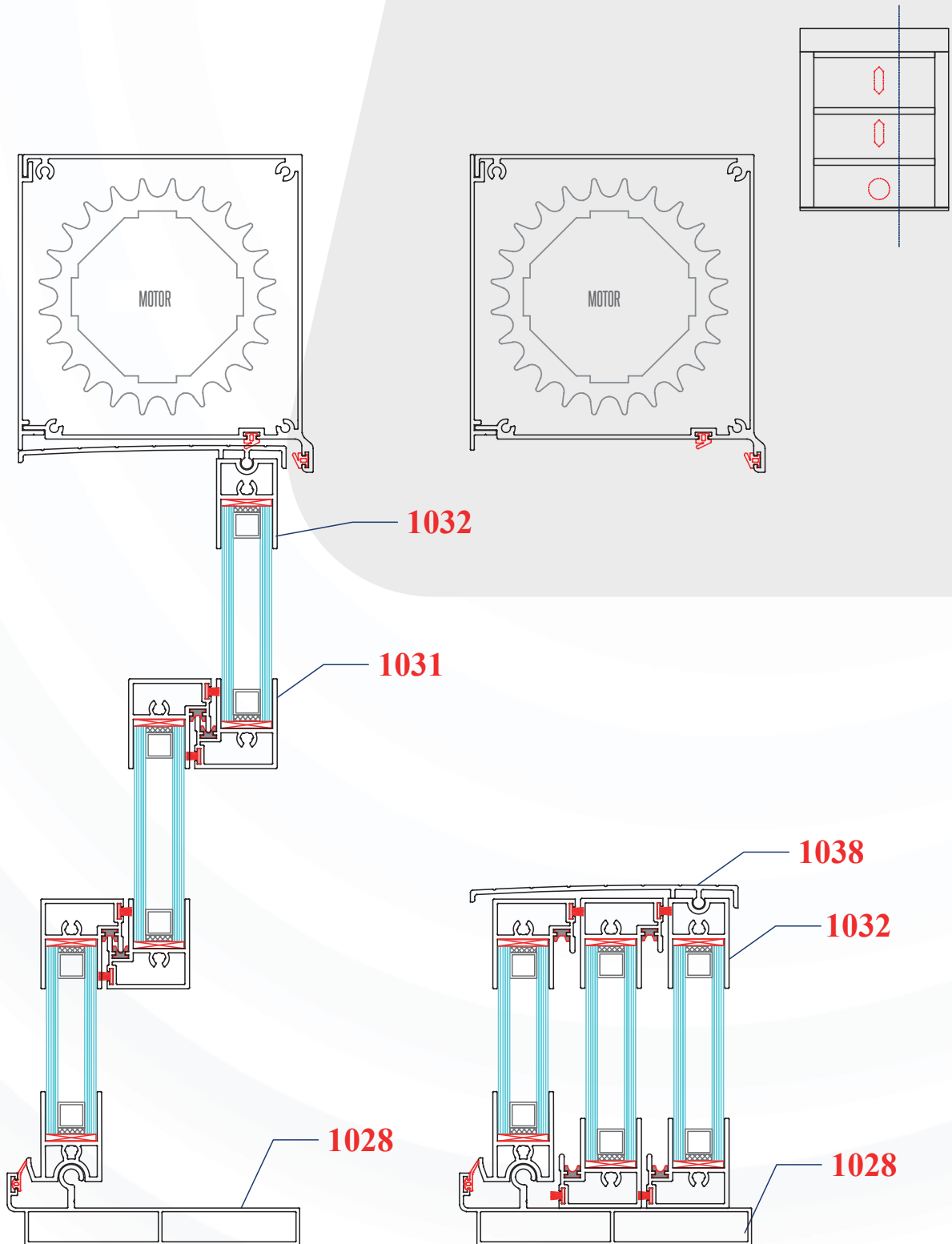
Cleaning System Details



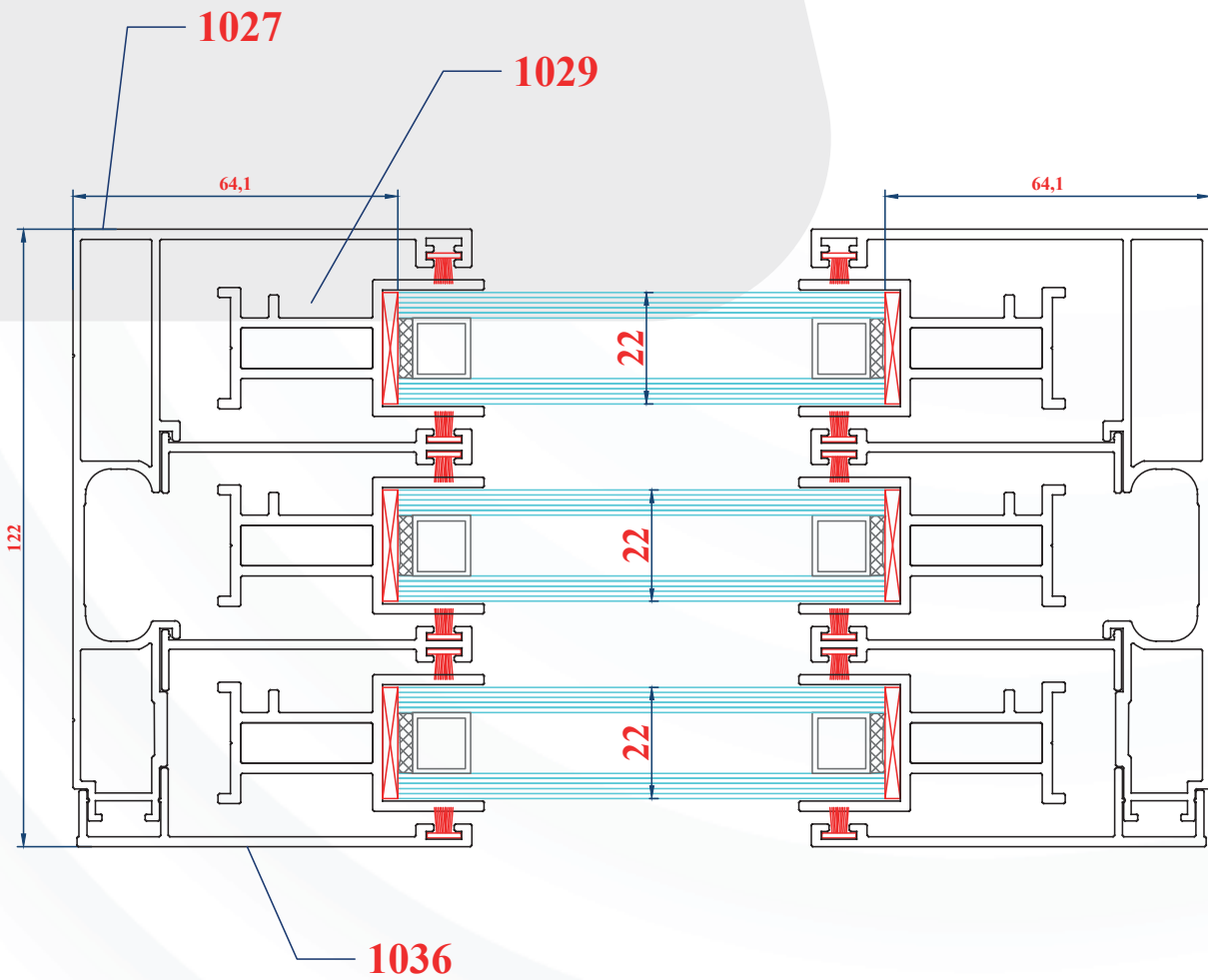
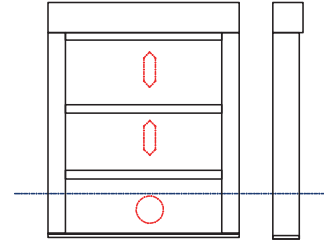
Locker System Details



Vertical Details (Non-Opener)



Strut Details (Non-Opener)







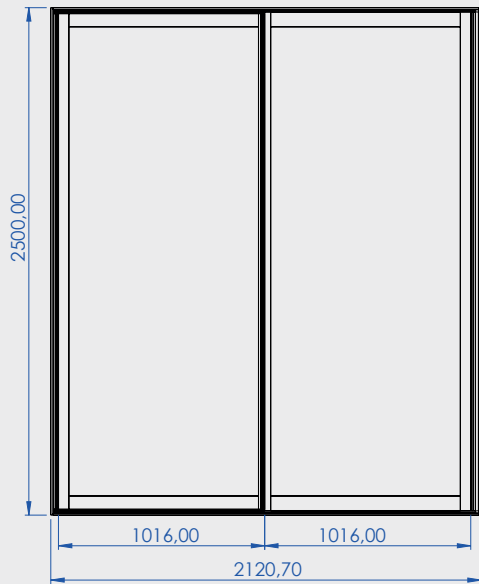




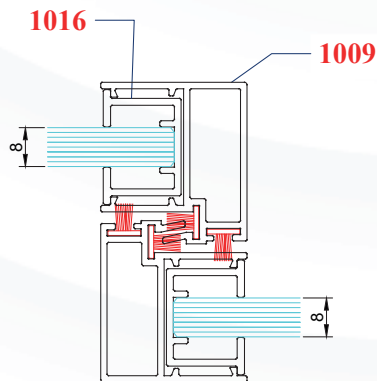
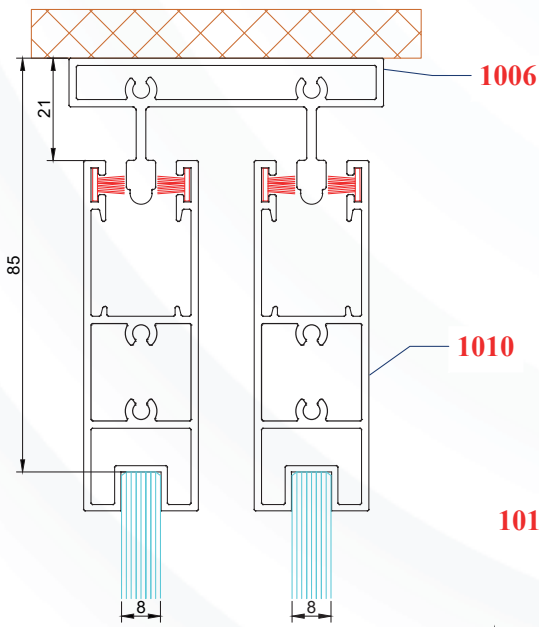
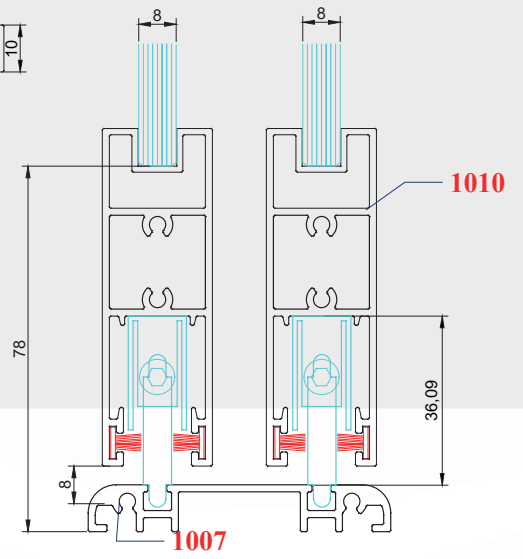
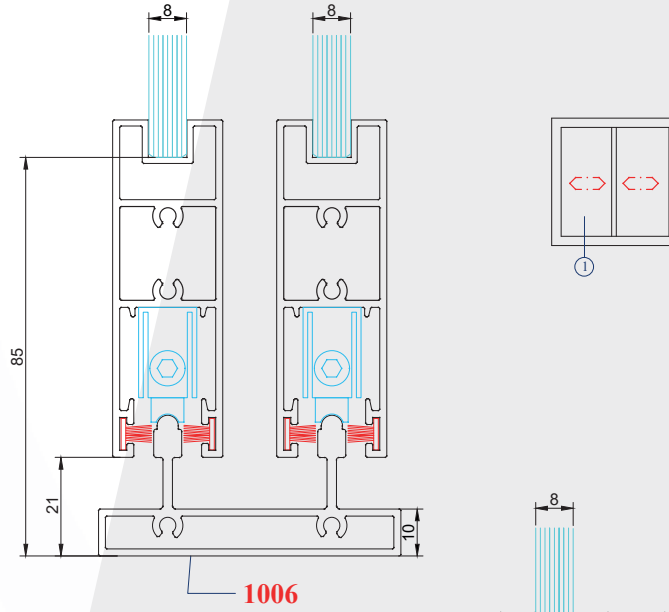
The background is a solid, vibrant orange color. It features several large, fluid, wavy shapes that resemble liquid or smoke, creating a sense of movement and depth. These shapes are layered, with some appearing more prominent than others, and they flow across the frame from top to bottom.

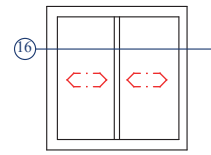
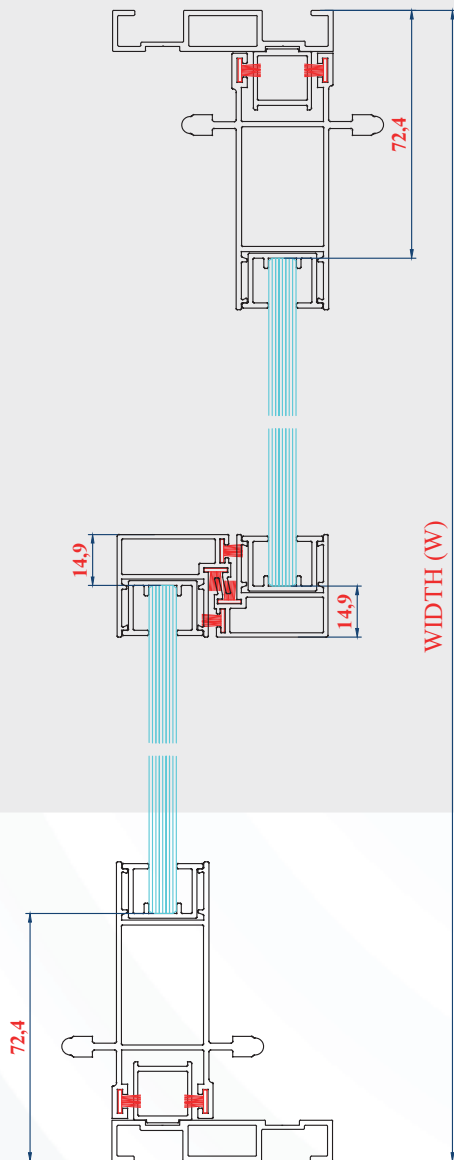
SLIDING DOOR SERIES

Sliding Door Systems 2 Wings

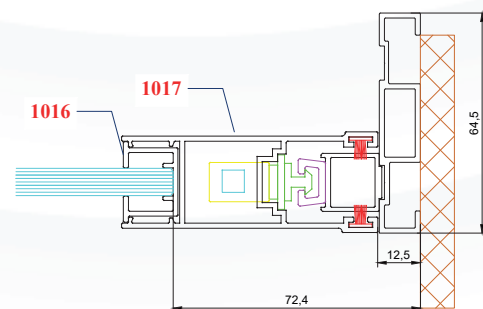
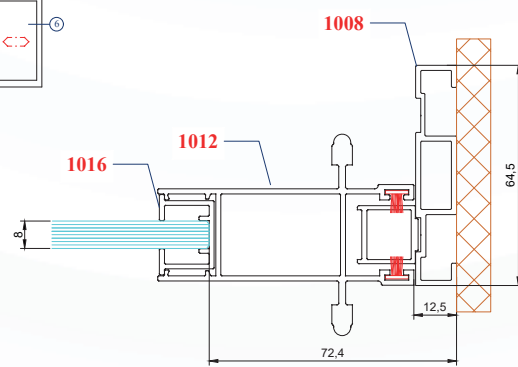
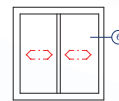


Vertical Details

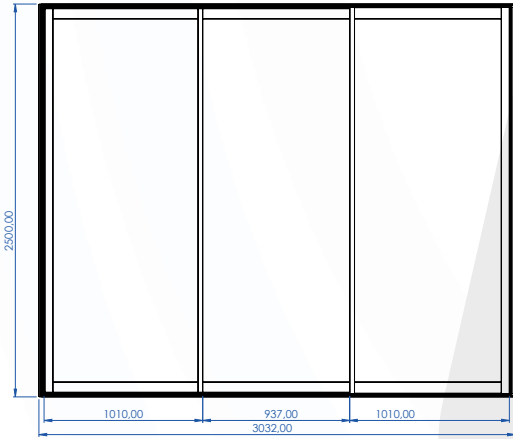




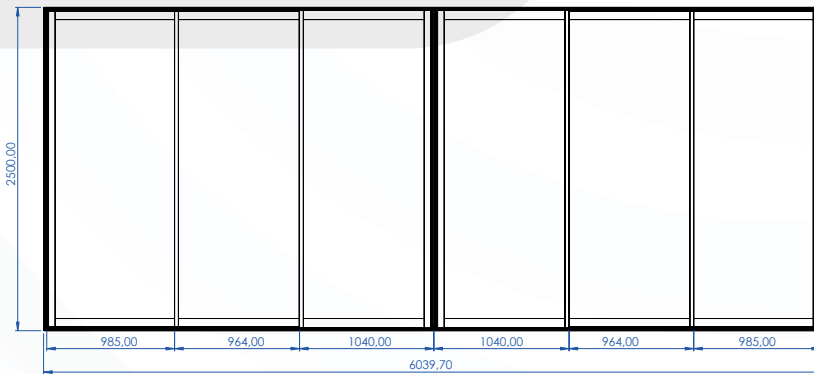
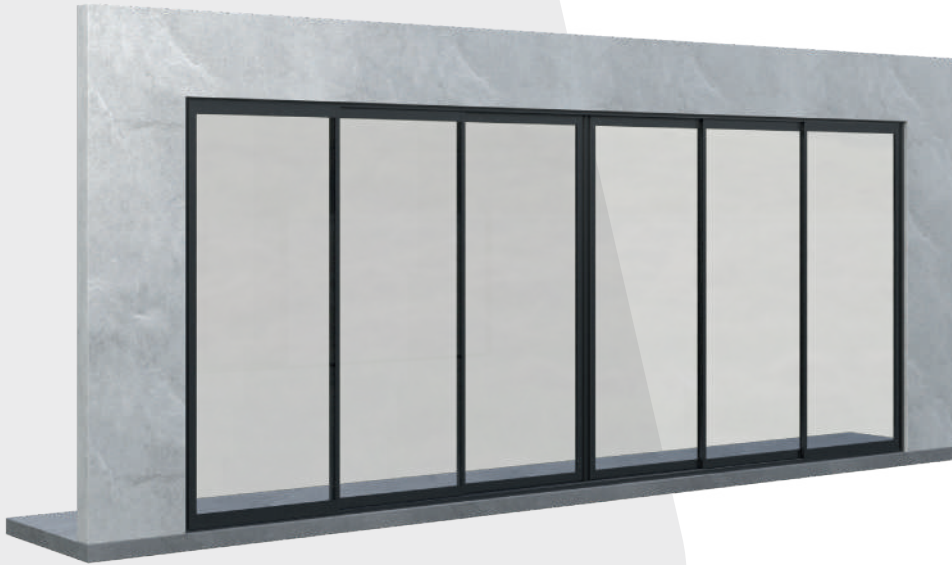
GLASS WIDTH = $\frac{W - [144,8 + (n-1) \times 14,9]}{n}$ (qty wings) MM



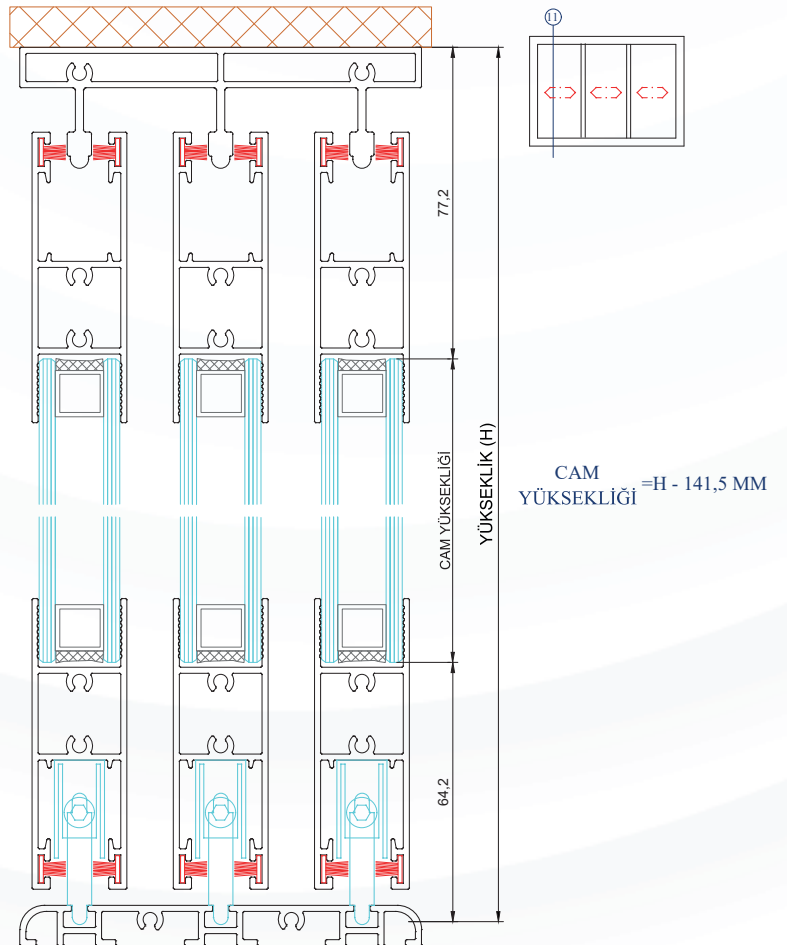
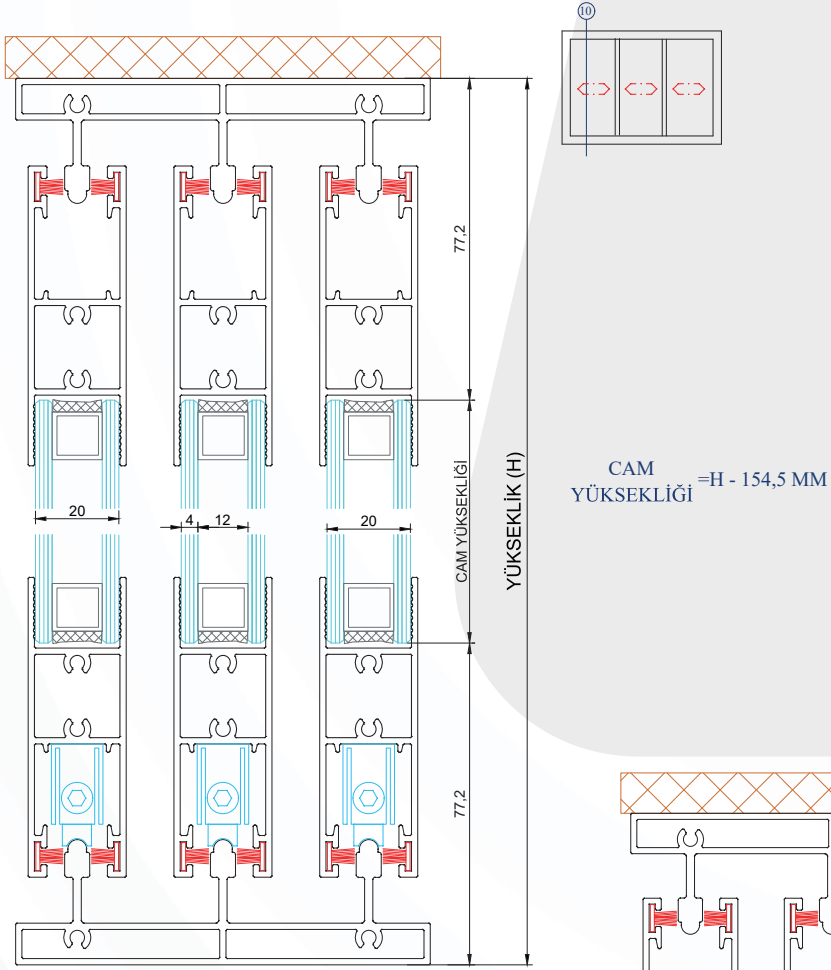
Sliding Door Systems 3 Wings

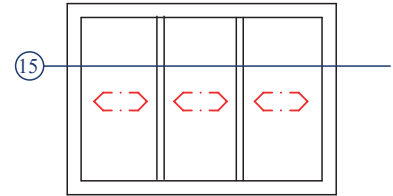
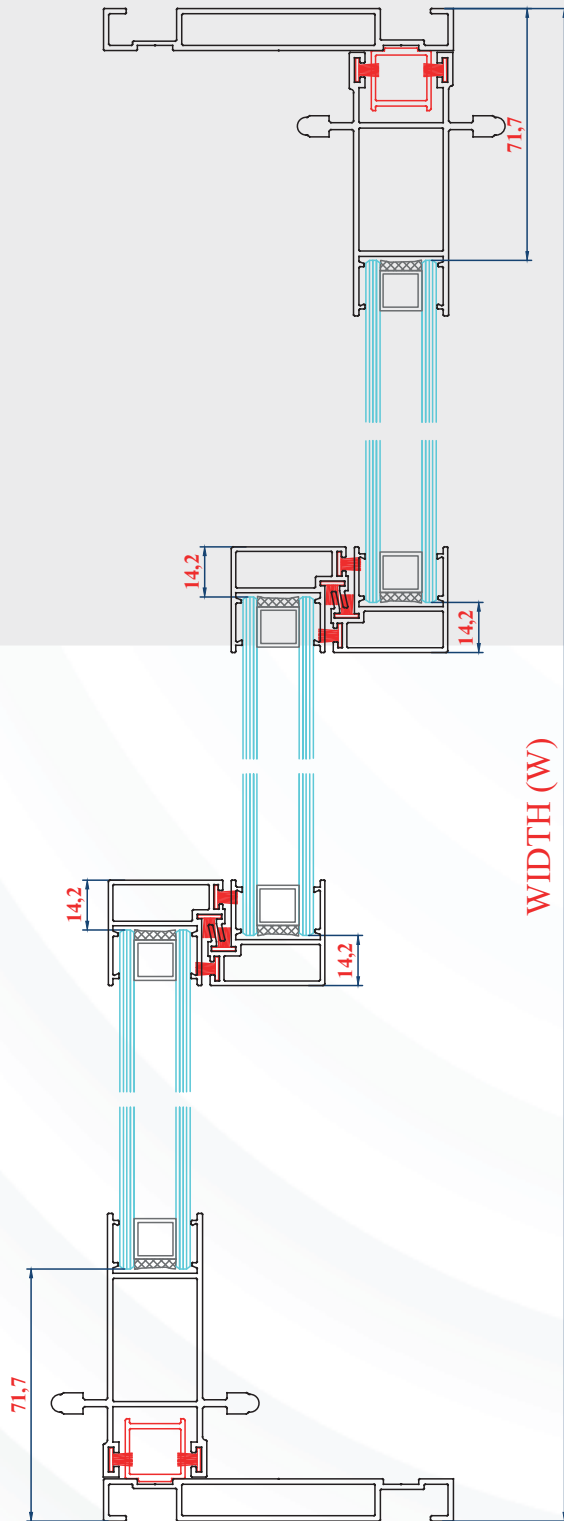


Sliding Door Systems 3+3 Wings



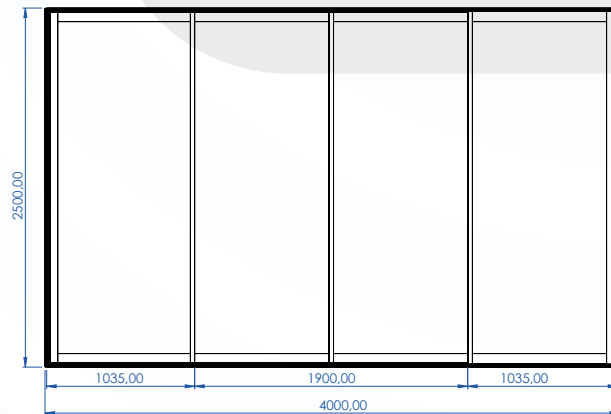
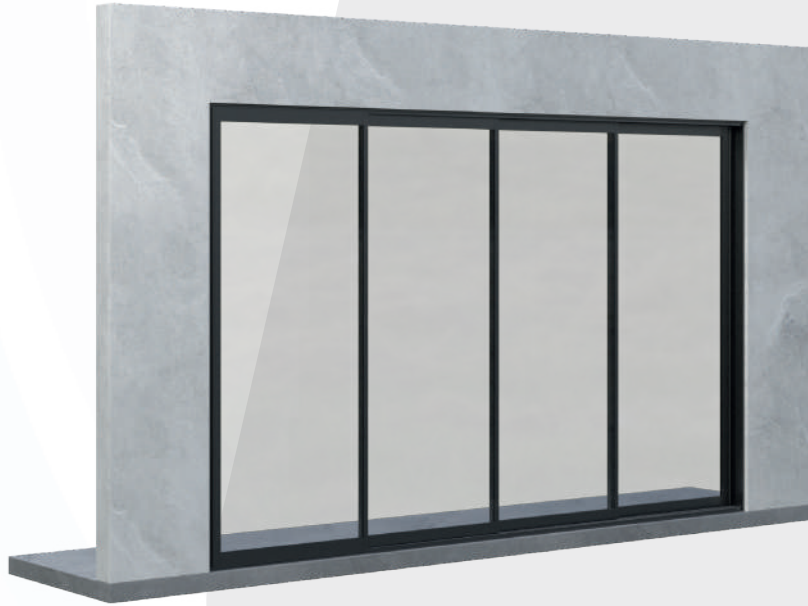
Vertical Details



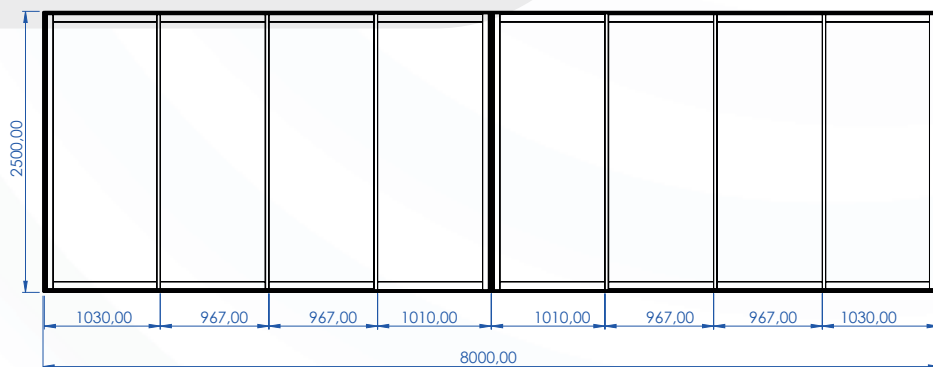
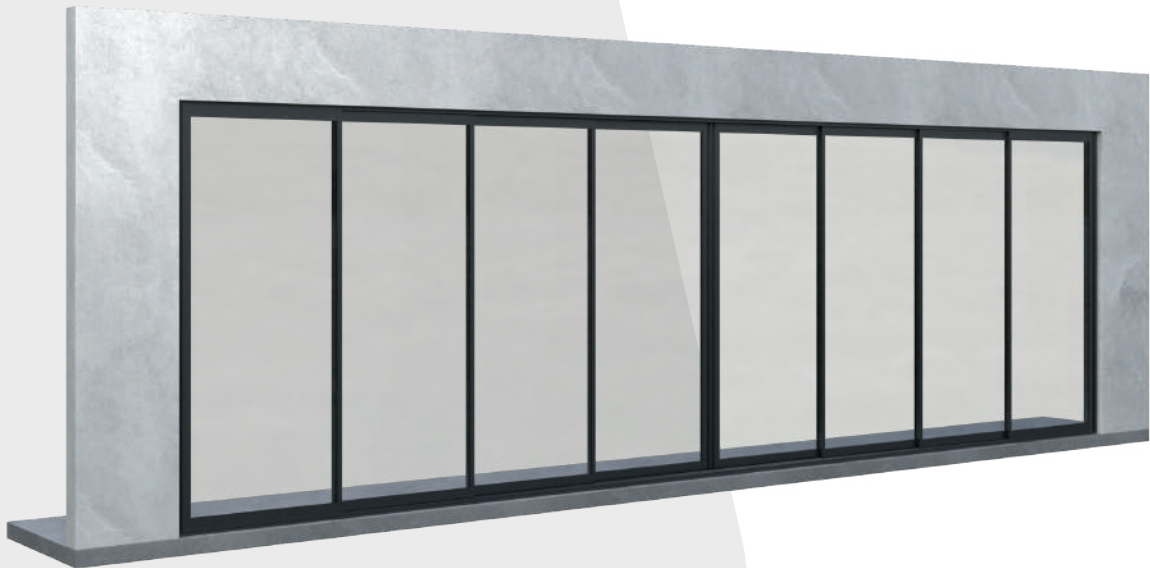


$$\text{GLASS WIDTH} = \frac{W - [143,4 + (n-1) \times 14,2]}{n \text{ (qty wings)}} \text{ MM}$$

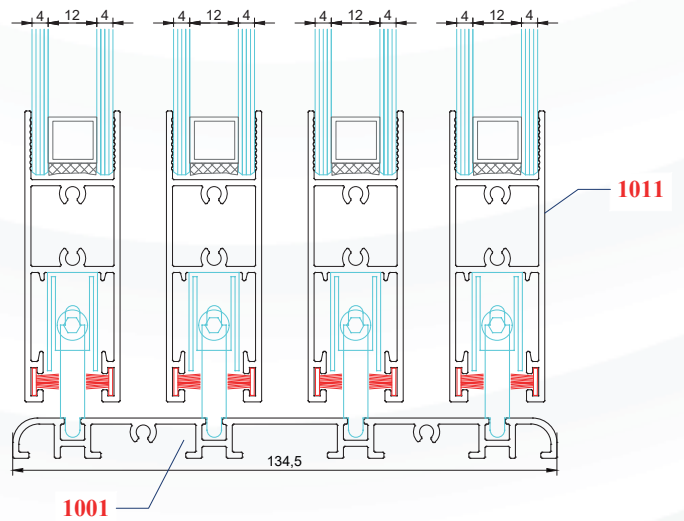
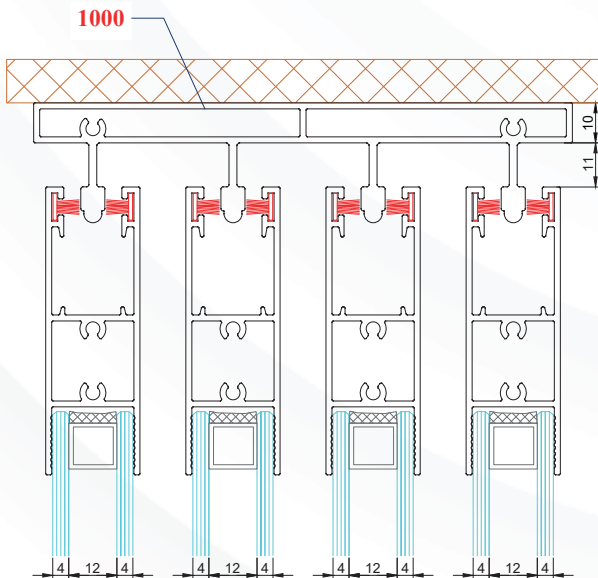
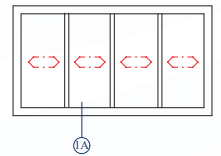
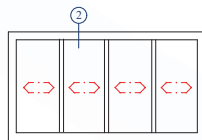
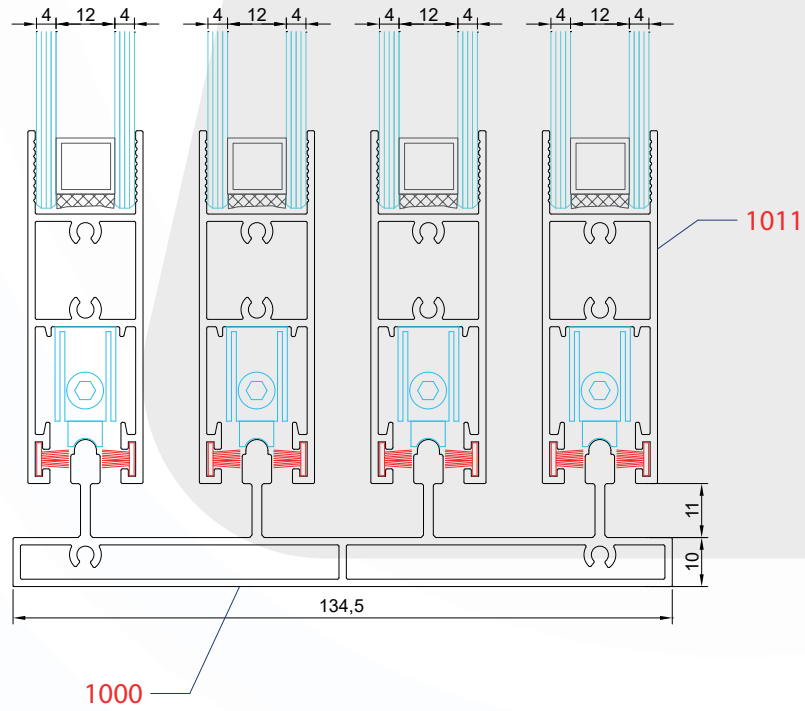
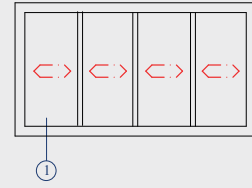
Sliding Door Systems 4 Wings

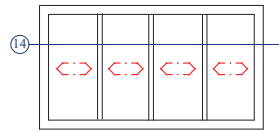
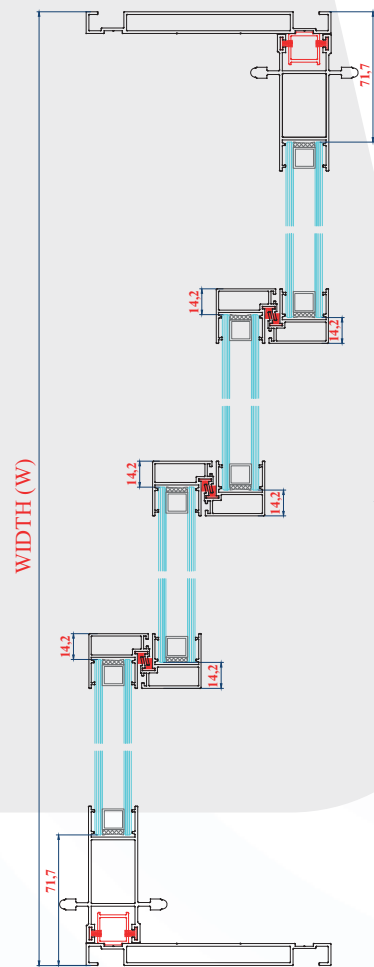


Sliding Door Systems 4+4 Wings

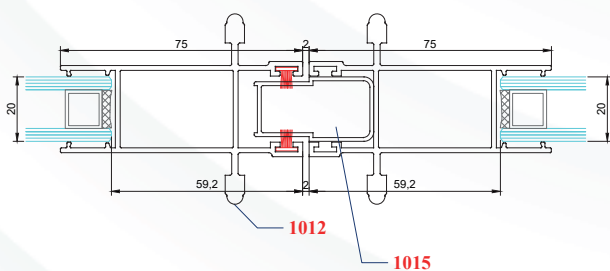
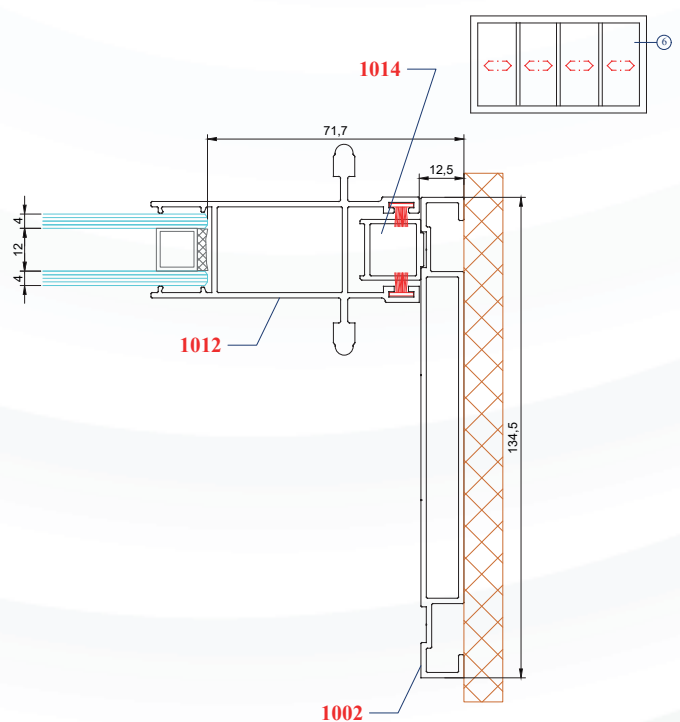
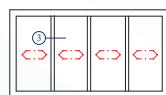
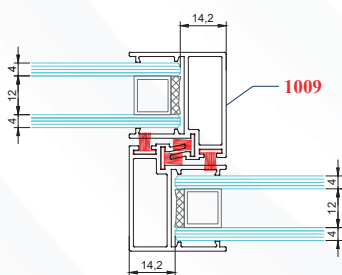


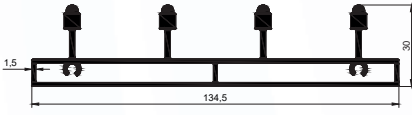
Vertical Details



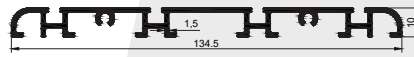


$$\text{GLASS WIDTH} = \frac{W - [143,4 + (n-1) \times 14,2]}{n \text{ (qty wings)}} \text{ MM}$$

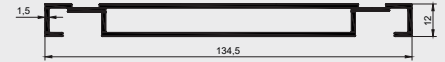




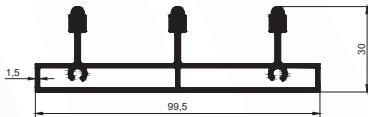
1000
Threshold Profile 4 Ways



1001
Floor Profile 4 Ways



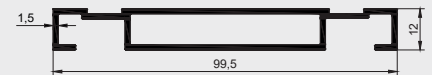
1002
4 Ways Column



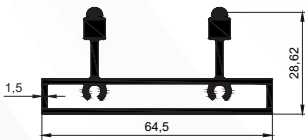
1003
Threshold Profile 3 Ways



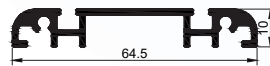
1004
Floor Profile 3 Ways



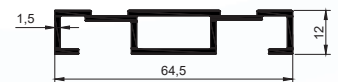
1005
3 Ways Column



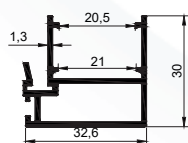
1006
Threshold Profile 2 Ways



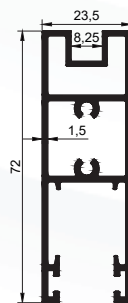
1007
Floor Profile 2 Ways



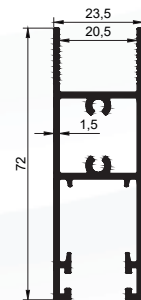
1008
2 Ways Column



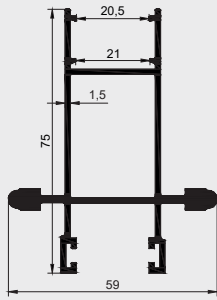
1009
Locker Profile



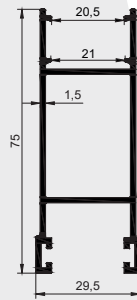
1010
Single Glass Profile



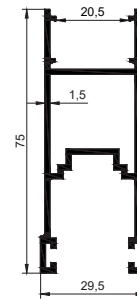
1011
Double Glass Profile



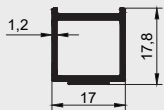
■ **1012**
Column Profile w/Handle



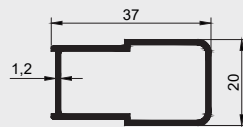
■ **1013**
Column Profile



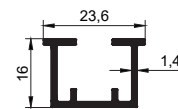
■ **1017**
Espagnolette Profile



■ **1014**
Strut Profile



■ **1015**
Strut Profile



■ **1016**
Espagnolette Cover



■ **AYD 100**
Lock



■ **AYD 101**
Hidden Lock



■ **AYD 102**
Bottom Roller



■ **600-009**
Brush



■ **600-099**
Cover Plastic





Kaiser Grand

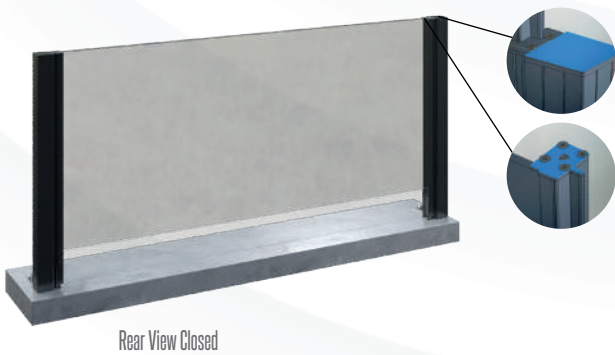
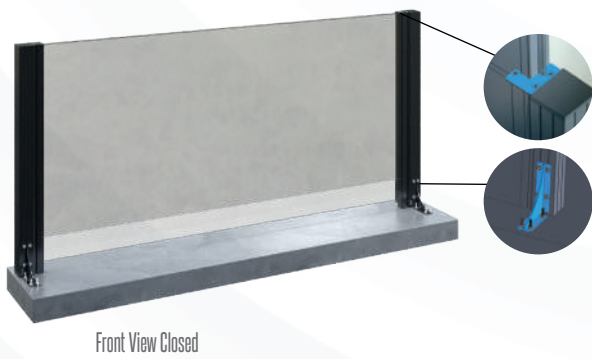
FOUR SEASONS LIVING SPACE

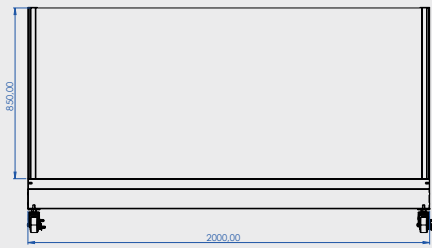




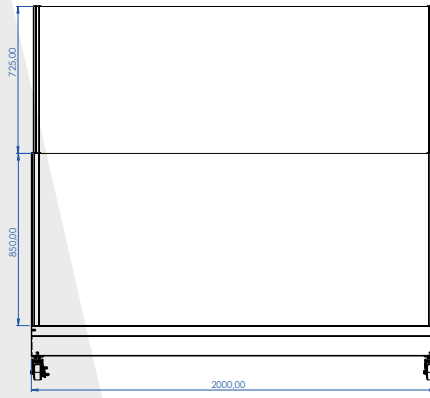
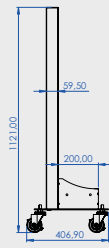
The background is a solid, vibrant orange color. It features several large, overlapping, wavy shapes that resemble liquid or smoke in motion. These shapes are darker in some areas and lighter in others, creating a sense of depth and movement. The overall effect is organic and dynamic.

WINDBREAKER SERIE

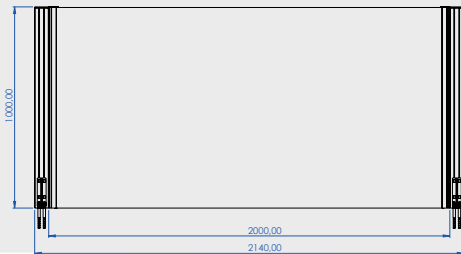
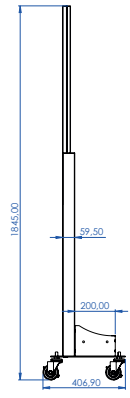




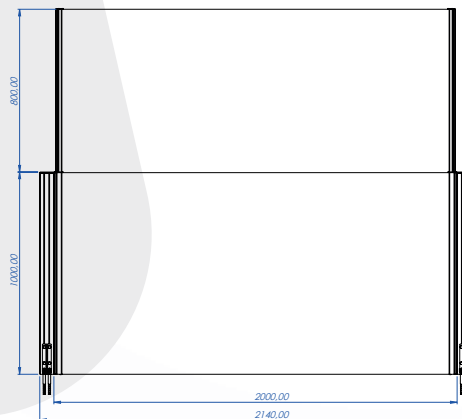
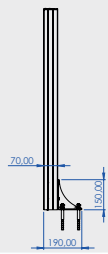
Closed



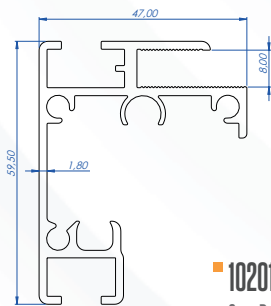
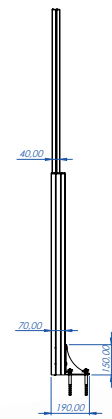
Opened



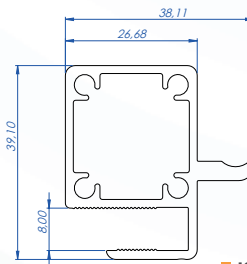
Closed



Opened



10201
Case Profile



10202
Opener Profile



900-006
Piston 200N



900-001
Piston Housing



900-003
Glass Keeper



900-004
Connector Plate



900-005
Floor Flange



Ascol



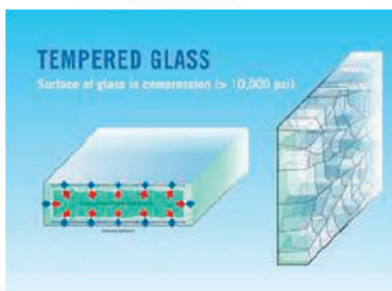


Use of glass panels in AKOS installations A wide range of glass panels can be integrated with AKOS system, in various thicknesses and characteristics according to specifications. There are two main categories according to EN12543 and EN12600 specified by the European Union concerning the thermal treatment of the glass. More specifically, EN12543 specifies the use of tempered and laminated glass with the insert of PVB membranes.

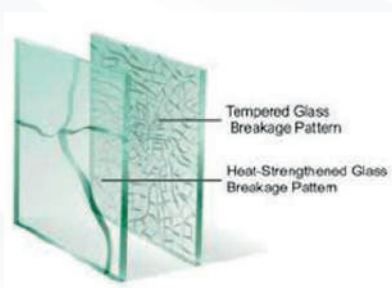


This type of glass panels has the following qualities:

- a)** In case of breakage, they do not break in large and sharp pieces.



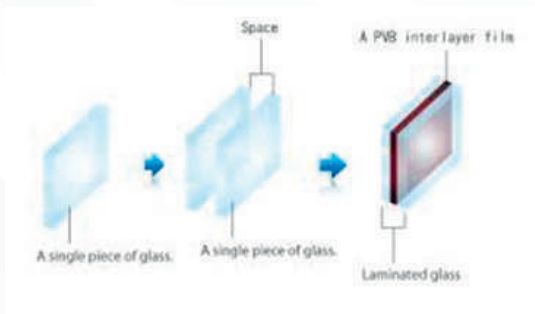
Laminated Glass TRIPLEX glass with PVB membrane



- a)** Even in case of such breakage, the broken glass pieces remain attached on the PVB surface without putting in danger the safety of nearby persons. The fabrication of these tempered and laminated glass panels is being carried out by thermal treatment of ordinary glass which is afterwards sandwiched together with the PVB membranes to give the various grades and thickness of laminated glass panels.



(PVB), placed in layers between the glass.
Rollers press the layers together to expel any air pockets.



Toughened Glass Thermally Toughenedglass



In the following pictures show the different types of breakage:
a) Tempered and laminated glass, and,
b) Ordinary tempered glass.
PVB films the common characteristics amongst the two categories mentioned previously, are the use of the PVB interlayer films.



The glass is then heated to 70o C in a pressurized oil bath to permanently bond all layers together. Typically, the thickness of each PVB film is 0,38 mm, additional layers of glass and PVB film increase the strength of the material. Applying two interlayers of film, the thickness becomes 0,78 mm, with three at 1,14 mm and so on. Apart from the different thickness of glass and PVB, a wide range of colored PVB, for example grey, blue green or yellow is available, offering a particular esthetique to modern buildings.



According to European Norms (EN 12600) the minimum number of films required is two, however AKOS recommends the use of glass with four PVB films for maximal security. Even in the event that the glass breaks, the two layers are held together by the PVB, allowing the sheet as a whole to bend and absorb the impact. This characteristic is especially important for places where safety or security are paramount. Types of security glasses the most common type Triplex glass consists of the combination of Heat Strengthened Glass – PVB – Heat Strengthened Glass. The result of a Heat Strengthened glass panel will resist two times stronger than ordinary glass, where a unified static force has been applied (EN 12543), to one of the same thickness. The second type of Triplex glass, and the one which meets the safety criteria is Thermally Toughened Glass, and its combination with PVB, known as toughened glass. Toughened Glass is manufactured by subjecting the finished glass size to a heating and cooling treatment which set up high compressive stresses at the surface, and balancing tensile stresses in the center of the glass, thus increasing its strength. The result is a glass that is 5 times stronger than ordinary glass. Heat strengthened glass is produced by a similar process to toughened glass, however, the strength developed is about half that of toughened glass, and its breakage resembles that of annealed glass. AKOS strongly recommends the use of Heat Strengthened Glass with the installation of any type of AKOS system.



- NOTE:Also; AKOS can do some mechanical operations on the glass in the direction of the customer's request. Connection holes, rodaj etc.

- Please contact us regarding Glass and PVB colours.

- The loads are made with wooden boxes for minimal deformation. The weights given are the weight of wooden boxes.

4 + 4 mm Laminated Glass

90 cm GLASS HEIGHT	LENGTH mm [W]	GLASS WIDTH [T]		WEIGHT [KG]	100 cm GLASS HEIGHT	LENGTH mm [W]	GLASS WIDTH [T]		WEIGHT [KG]	110 cm GLASS HEIGHT	LENGTH mm [W]	GLASS WIDTH [T]		WEIGHT [KG]
9010-8	100	8	(41,52-4)	1,8	10010-8	100	8	(41,52-4)	2	11010-8	100	8	(41,52-4)	2,2
9020-8	200	8	(41,52-4)	3,6	10020-8	200	8	(41,52-4)	4	11020-8	200	8	(41,52-4)	4,4
9030-8	300	8	(41,52-4)	5,4	10030-8	300	8	(41,52-4)	6	11030-8	300	8	(41,52-4)	6,6
9040-8	400	8	(41,52-4)	7,2	10040-8	400	8	(41,52-4)	8	11040-8	400	8	(41,52-4)	8,8
9050-8	500	8	(41,52-4)	9,0	10050-8	500	8	(41,52-4)	10	11050-8	500	8	(41,52-4)	11
9060-8	600	8	(41,52-4)	10,8	10060-8	600	8	(41,52-4)	12	11060-8	600	8	(41,52-4)	13,2
9070-8	700	8	(41,52-4)	12,6	10070-8	700	8	(41,52-4)	14	11070-8	700	8	(41,52-4)	15,4
9080-8	800	8	(41,52-4)	14,4	10080-8	800	8	(41,52-4)	16	11080-8	800	8	(41,52-4)	17,6
9090-8	900	8	(41,52-4)	16,2	10090-8	900	8	(41,52-4)	18	11090-8	900	8	(41,52-4)	19,8
90100-8	1000	8	(41,52-4)	18,0	100100-8	1000	8	(41,52-4)	20	110100-8	1000	8	(41,52-4)	22
90110-8	1100	8	(41,52-4)	19,8	100110-8	1100	8	(41,52-4)	22	110110-8	1100	8	(41,52-4)	24,2
90120-8	1200	8	(41,52-4)	21,6	100120-8	1200	8	(41,52-4)	24	110120-8	1200	8	(41,52-4)	26,4

6 + 6 mm Laminated Glass

90 cm GLASS HEIGHT	LENGTH mm [W]	GLASS WIDTH [T]		WEIGHT [KG]	100 cm GLASS HEIGHT	LENGTH mm [W]	GLASS WIDTH [T]		WEIGHT [KG]	110 cm GLASS HEIGHT	LENGTH mm [W]	GLASS WIDTH [T]		WEIGHT [KG]
901012	100	12	(61,52-6)	2,7	1001012	100	12	(61,52-6)	3	1101012	100	12	(61,52-6)	3,3
902012	200	12	(61,52-6)	5,4	1002012	200	12	(61,52-6)	6	1102012	200	12	(61,52-6)	6,6
903012	300	12	(61,52-6)	8,1	1003012	300	12	(61,52-6)	9	1103012	300	12	(61,52-6)	9,9
904012	400	12	(61,52-6)	10,8	1004012	400	12	(61,52-6)	12	1104012	400	12	(61,52-6)	13,2
905012	500	12	(61,52-6)	13,5	1005012	500	12	(61,52-6)	15	1105012	500	12	(61,52-6)	16,5
906012	600	12	(61,52-6)	16,2	1006012	600	12	(61,52-6)	18	1106012	600	12	(61,52-6)	19,8
907012	700	12	(61,52-6)	18,9	1007012	700	12	(61,52-6)	21	1107012	700	12	(61,52-6)	23,1
908012	800	12	(61,52-6)	21,6	1008012	800	12	(61,52-6)	24	1108012	800	12	(61,52-6)	26,4
909012	900	12	(61,52-6)	24,3	1009012	900	12	(61,52-6)	27	1109012	900	12	(61,52-6)	29,7
9010012	1000	12	(61,52-6)	27	10010012	1000	12	(61,52-6)	30	11010012	1000	12	(61,52-6)	33
9011012	1100	12	(61,52-6)	29,7	10011012	1100	12	(61,52-6)	33	11011012	1100	12	(61,52-6)	36,3
9012012	1200	12	(61,52-6)	32,4	10012012	1200	12	(61,52-6)	36	11012012	1200	12	(61,52-6)	39,6

8 + 8 mm Laminated Glass

90 cm GLASS HEIGHT	LENGTH mm [W]	GLASS WIDTH [T]		WEIGHT [KG]	100 cm GLASS HEIGHT	LENGTH mm [W]	GLASS WIDTH [T]		WEIGHT [KG]	110 cm GLASS HEIGHT	LENGTH mm [W]	GLASS WIDTH [T]		WEIGHT [KG]
901016	100	16	(81,52-8)	3,6	1001016	100	16	(81,52-8)	4	1101016	100	16	(81,52-8)	4,4
902016	200	16	(81,52-8)	7,2	1002016	200	16	(81,52-8)	8	1102016	200	16	(81,52-8)	8,8
903016	300	16	(81,52-8)	10,8	1003016	300	16	(81,52-8)	12	1103016	300	16	(81,52-8)	13,2
904016	400	16	(81,52-8)	14,4	1004016	400	16	(81,52-8)	16	1104016	400	16	(81,52-8)	17,6
905016	500	16	(81,52-8)	18	1005016	500	16	(81,52-8)	20	1105016	500	16	(81,52-8)	22
906016	600	16	(81,52-8)	21,6	1006016	600	16	(81,52-8)	24	1106016	600	16	(81,52-8)	26,4
907016	700	16	(81,52-8)	25,2	1007016	700	16	(81,52-8)	28	1107016	700	16	(81,52-8)	30,8
908016	800	16	(81,52-8)	28,8	1008016	800	16	(81,52-8)	32	1108016	800	16	(81,52-8)	35,2
909016	900	16	(81,52-8)	32,4	1009016	900	16	(81,52-8)	36	1109016	900	16	(81,52-8)	39,6
9010016	1000	16	(81,52-8)	36	10010016	1000	16	(81,52-8)	40	11010016	1000	16	(81,52-8)	44
9011016	1100	16	(81,52-8)	39,6	10011016	1100	16	(81,52-8)	44	11011016	1100	16	(81,52-8)	48,4
9012016	1200	16	(81,52-8)	43,2	10012016	1200	16	(81,52-8)	48	11012016	1200	16	(81,52-8)	52,8

10 + 10 mm Laminated Glass

90 cm GLASS HEIGHT	LENGTH mm [W]	GLASS WIDTH [T]		WEIGHT [KG]	90 cm GLASS HEIGHT	LENGTH mm [W]	GLASS WIDTH [T]		WEIGHT [KG]	90 cm GLASS HEIGHT	LENGTH mm [W]	GLASS WIDTH [T]		WEIGHT [KG]
9010-20	100	20	-101,521	4,5	10010-20	100	20	-101,521	5	11010-20	100	20	-101,521	5,5
9020-20	200	20	-101,521	9	10020-20	200	20	-101,521	10	11020-20	200	20	-101,521	11
9030-20	300	20	-101,521	13,5	10030-20	300	20	-101,521	15	11030-20	300	20	-101,521	16,5
9040-20	400	20	-101,521	18	10040-20	400	20	-101,521	20	11040-20	400	20	-101,521	22
9050-20	500	20	-101,521	22,5	10050-20	500	20	-101,521	25	11050-20	500	20	-101,521	27,5
9060-20	600	20	-101,521	27	10060-20	600	20	-101,521	30	11060-20	600	20	-101,521	33
9070-20	700	20	-101,521	31,5	10070-20	700	20	-101,521	35	11070-20	700	20	-101,521	38,5
9080-20	800	20	-101,521	36	10080-20	800	20	-101,521	40	11080-20	800	20	-101,521	44
9090-20	900	20	-101,521	40,5	10090-20	900	20	-101,521	45	11090-20	900	20	-101,521	49,5
90100-20	1000	20	-101,521	45	100100-20	1000	20	-101,521	50	110100-20	1000	20	-101,521	55
90110-20	1100	20	-101,521	49,5	100110-20	1100	20	-101,521	55	110110-20	1100	20	-101,521	60,5
90120-20	1200	20	-101,521	54	100120-20	1200	20	-101,521	60	110120-20	1200	20	-101,521	66

