



high

quality materials with a modern
design and superior finishing.

index page number

06
EURO10
SERIES 

17
A20
SERIES 

25
A13
SERIES 

34
A40
SERIES 

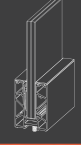
43
A52
SERIES 

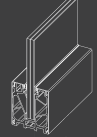
52
A55
SERIES 

09
EURO40
SERIES 

19
A11
SERIES 

28
A30
SERIES 

37
A50
SERIES 

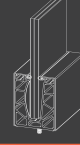
46
A53
SERIES 

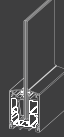
62
A60
SERIES 

12
A10
SERIES 

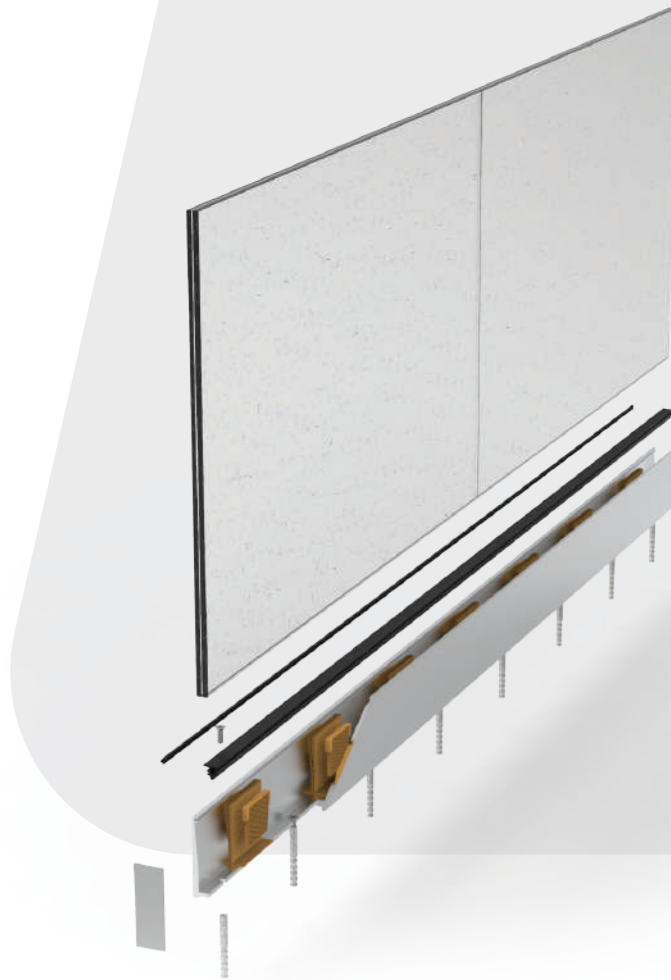
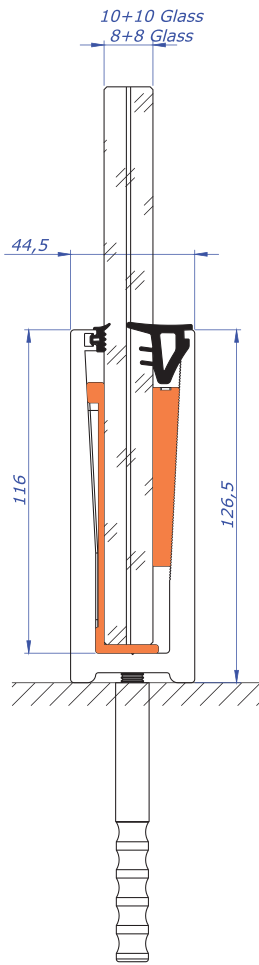
22
A12
SERIES 

31
A31
SERIES 

40
A51
SERIES 

49
A54
SERIES 

86
A66
SERIES 



Alusmart Euro 10 System, one of our rich profile options, is suitable for different architectures, stands out with its reliable holding strength and minimalist design.

- Suitable also for large public spaces with demanding safety requirements.
- Complies with worldwide safety and building regulations.
- Aluminium cladding with a stainless steel effect.
- Uses the Safety Wedge system for easy glass installation.
- Complete your desired look by choosing from a range of handrails and cap rails in a variety of materials, shapes and sizes.

Criteria	Value
SafetyLoad	1.2
LineLoad	50 Lbs (225 N)
Pressure	200 Lbs (890 N)
CertifiedPressure	1.5kN
AdviceHeight	Upto120cm(47' / 1")
AlignmentCapacity	-
Distance/s	-



■ 500-001
Wick for 500-793



■ 500-791
EPDM Wick for 500-790



■ 500-711
Euro 10 Inner Corner 90°



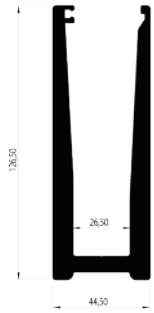
■ 500-712
Euro 10 Outer Corner 90°



■ 500-713
Euro 10 Inner Corner 45°



■ 500-714
Euro 10 Outer Corner 45°



■ **4046**
Euro 10 Glass Base Profile -
6 Meters



■ **500-715**
Euro 10 Endcap



■ **500-790**
Plastic Compression Kit
Set for 8+8 Glass



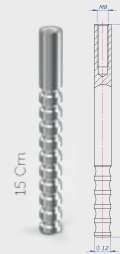
■ **500-793**
Plastic Compression Kit
Set for 10+10 Glass



■ **500-792**
EPDM Rubber



■ **500-015**
Anchor M8

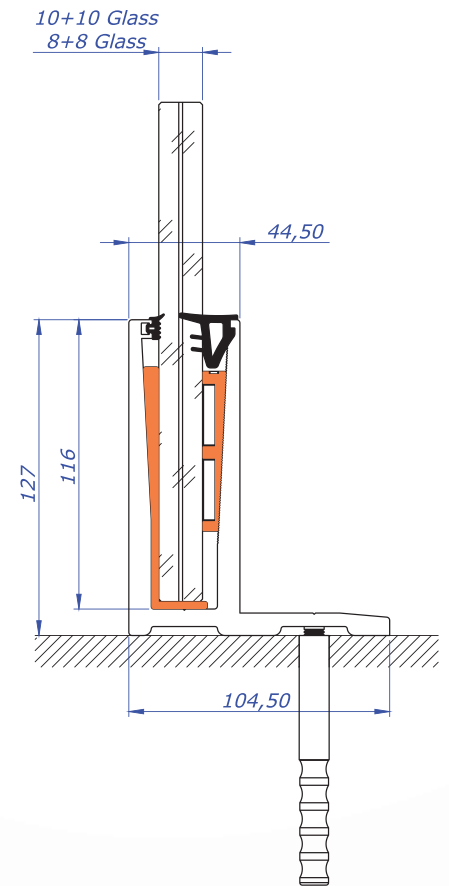


■ **500-016**
Anchor M8



■ **500-018**
Inox Screw M8

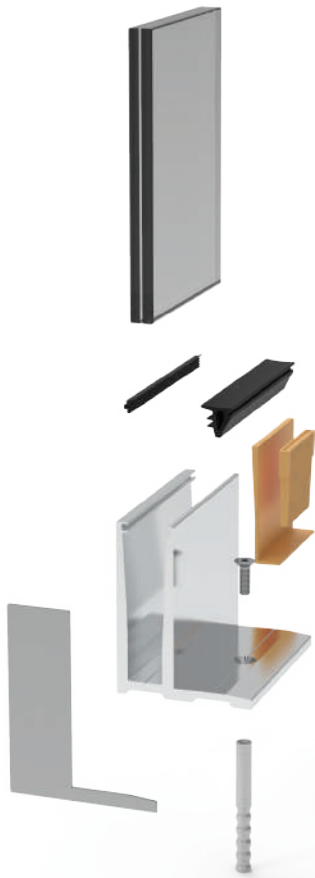




Alusmart Euro 40 System provides big living spaces and confidence of using 8+8 laminated glass. Designed for safety with its solid design.

- Complies with worldwide safety and building regulations
- Aluminium cladding with a stainless steel effect
- Uses the Safety Wedge system for easy glass installation.
- Complete your desired look by choosing from a range of handrails and cap rails in a variety of materials, shapes and sizes.

Criteria	Value
SafetyLoad	1.7
LineLoad	50 Lbs (225 N)
Pressure	200 Lbs (890 N)
Prooved Pressure	2.2kN
AdviceHeight	Upto120cm(47' / /")
Alignment Capacity	-
Distance /s	-



■ **500-001**
Rubber for 500-793



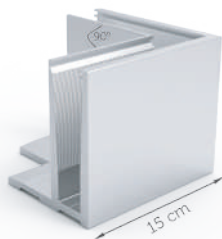
■ **500-791**
EPDM Rubber for 500-790



■ **500-792**
EPDM Wick



■ **500-741**
Euro 40 Inner Corner 90°



■ **500-742**
Euro 40 Outer Corner 90°

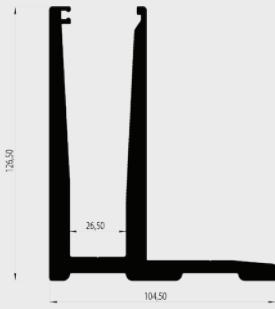


■ **500-743**
Euro 40 Inner Corner 45°



■ **500-744**
Euro 40 Outer Corner 45°

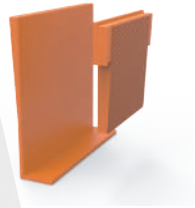
**EURO40
SERIES**



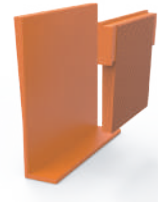
■ **4045**
Euro 40 Glass Base Profile -
6 Meters



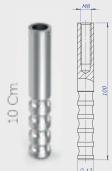
■ **500-745**
Euro 40 Endcap



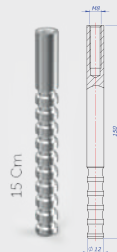
■ **500-790**
Plastic Compression
Set for 8+8 Glass



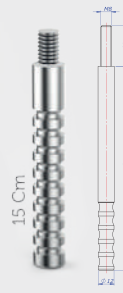
■ **500-793**
Plastic Compression Set for
10+10 Glass



■ **500-015**
Anchor M8



■ **500-016**
Anchor M8



■ **500-014**
Anchor M8

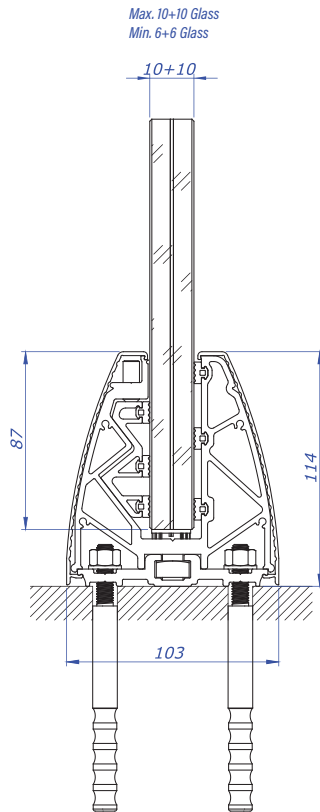


■ **500-018**
Inox Screw M8



■ **500-019**
Dome Nut M8

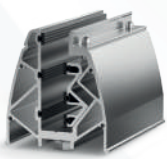
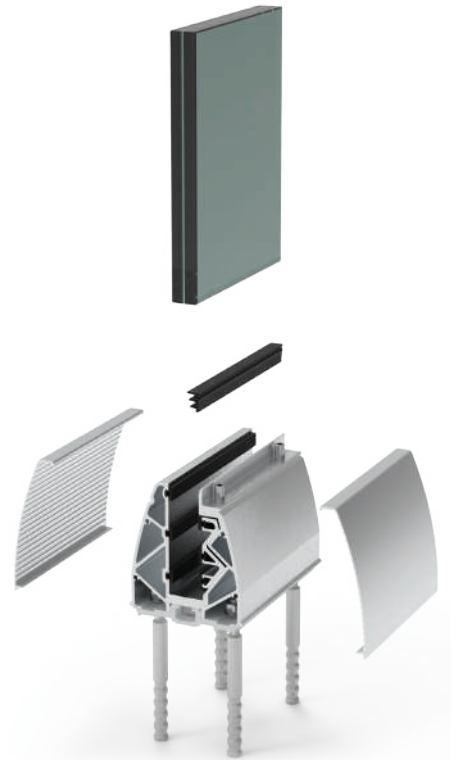




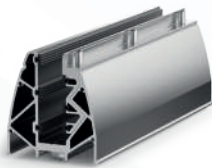
Alusmart A10 System provides you comfort in assembly and installation with its privileged designs and rational solutions.

- Architectural aesthetics by oval and angled cover.
- Strong connection thanks to the rail profile.
- Zero deformation thanks to the glass compression devise.
- Eliminates obliqueness by sequential arrangement.
- Aesthetic design with optional Led Lighting.
- Ready sets of 90° and 45° angled for corners.

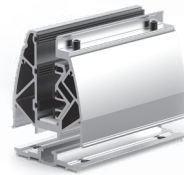
Criteria	Value
SafetyLoad	1.7
LineLoad	50 Lbs (225 N)
Pressure	200 Lbs (890 N)
CertifiedPressure	2.2kN
AdviceHeight	Upto120cm(47'/'")
Alignment Capacity	-
Distance/s	-



■ **500-101**
Glass Base Set 15 cm



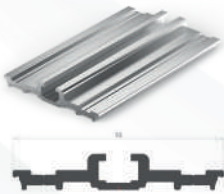
■ **500-102**
Glass Base Set 30 cm



■ **500-104**
Glass Base Set 15 cm
w/Rail



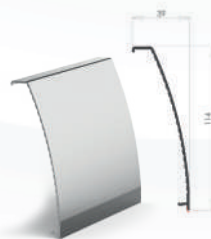
■ **500-105**
Glass Base Set 30 cm
w/Rail



■ **2987**
Rail Line Profile
(6 Meters)



■ **500-103**
Endcap



■ **2986**
Cover Profile (6 Meters)



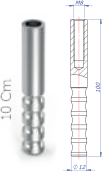
■ **500-001**
Rubber Wick



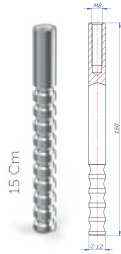
■ **500-203**
Endcap



■ **2985**
Cover Profile (6 Meters)



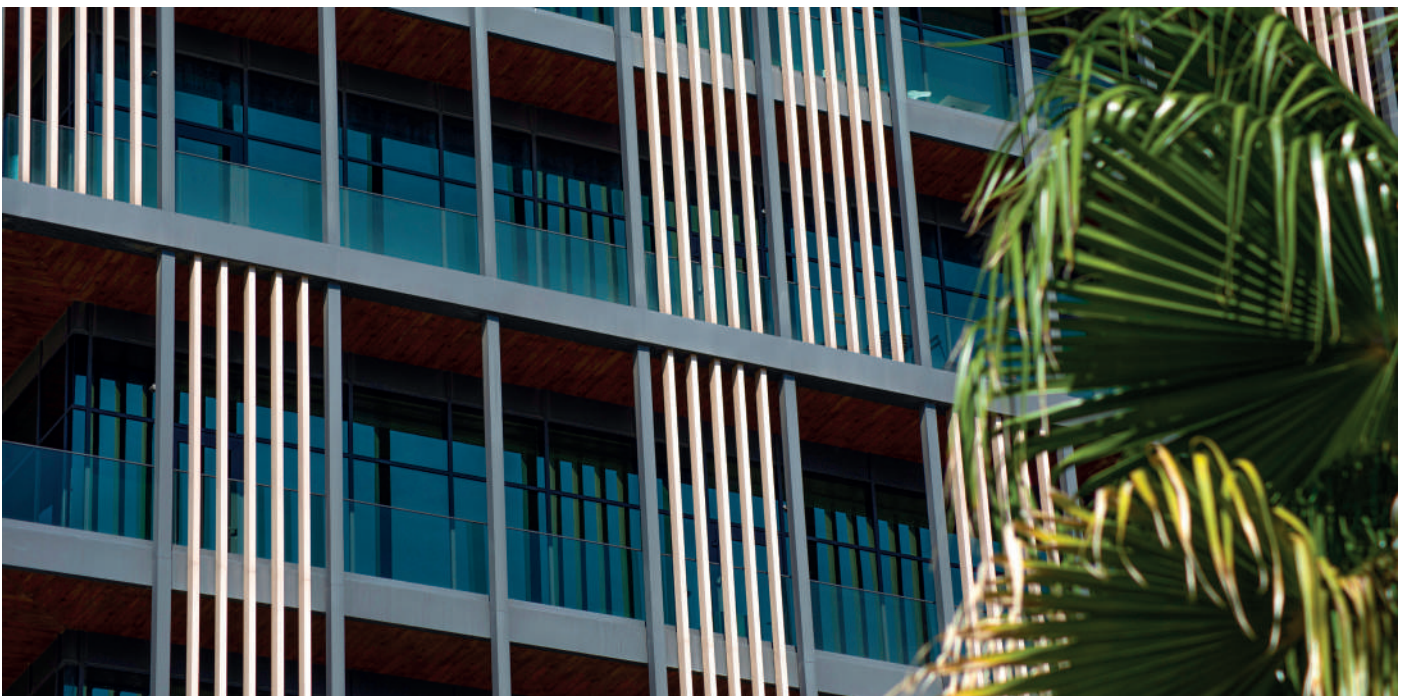
■ **500-015**
Anchor M8

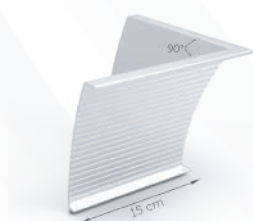


■ **500-016**
Anchor M8



■ **500-018**
Inox Bolt M8

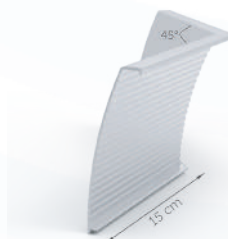




■ **500-106**
90° Inner Corner For 2986



■ **500-107**
90° Outer Corner For 2986



■ **500-108**
45° Inner Corner For 2986



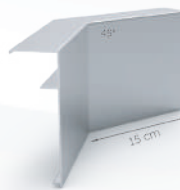
■ **500-109**
45° Outer Corner For 2986



■ **500-206**
90° Inner Corner For 2985



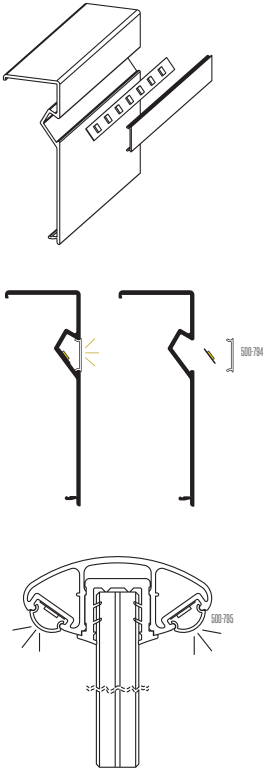
■ **500-207**
90° Outer Corner For 2985



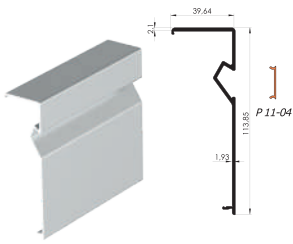
■ **500-208**
45° Inner Corner For 2985



■ **500-209**
45° Outer Corner For 2985



• Aesthetic design with optional Led Lighting.



■ **6150**
Cover Profile With Led Channel (6 Meters)



■ **100-036**
Led Strip Light (5 Meters)



■ **500-795**
Plastic Led Cover (6 Meters)



■ **500-794**
Plastic Led Cover (6 meters)



■ **500-132**
90° Outer Corner for 6150



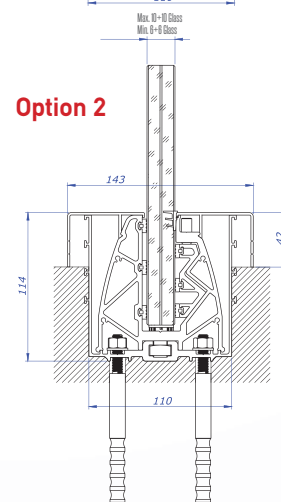
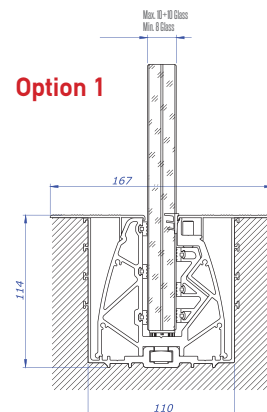
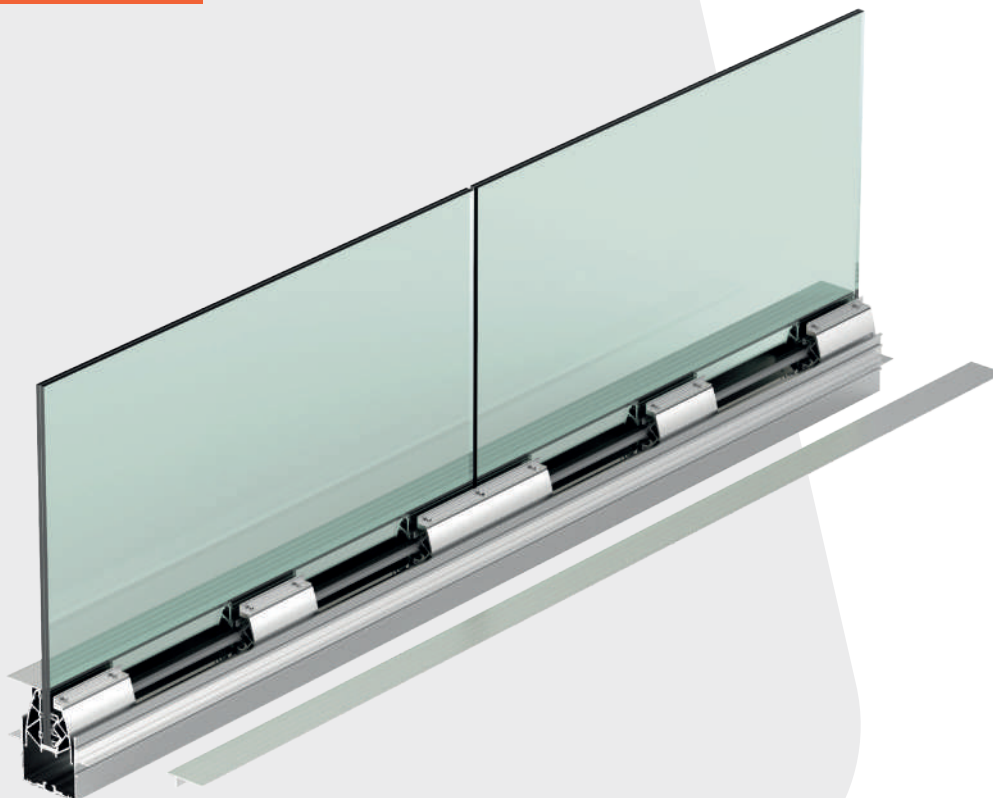
■ **500-133**
90° Inner Corner for 6150



■ **500-134**
45° Outer Corner for 6150

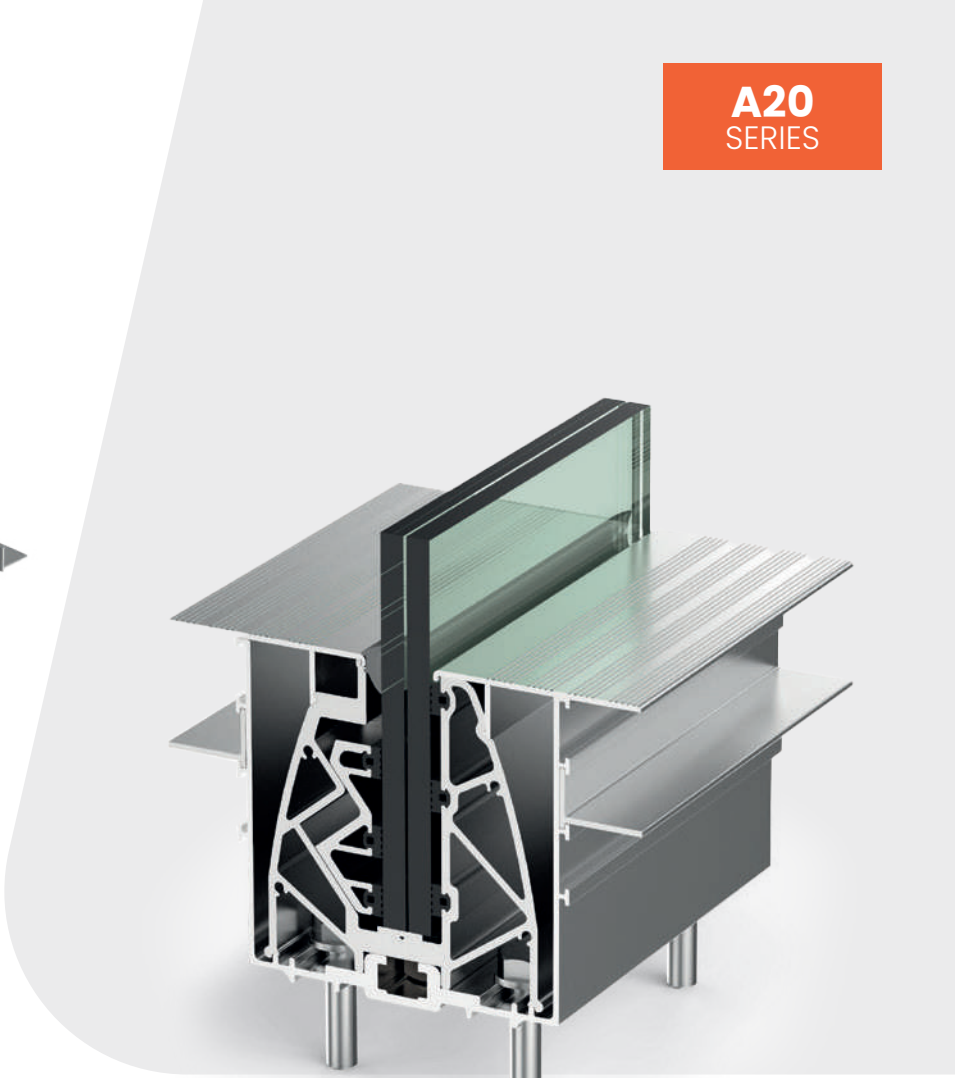
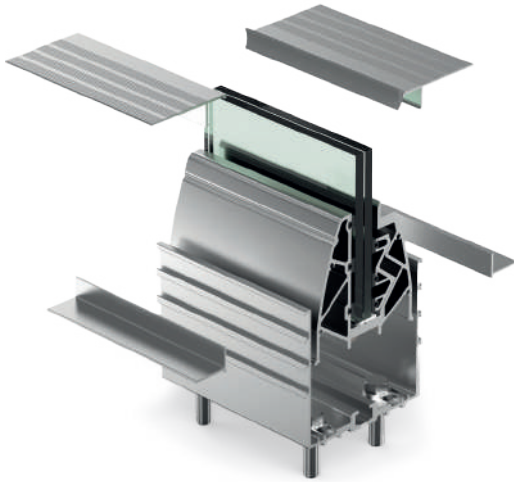


■ **500-135**
45° Inner Corner for 6150

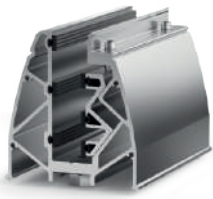


- It is mounted as a recessed type in the ground.
- It's ideal for cafes and shopping malls.
- Thanks to U-shaped rail profile; a high degree of inertia and a strong connection can be made.
- Easy installation saves workmanship and time.
- Because of the glass compression device is made planar and aluminum profile, it does not deform in use for many years and provides high inertia to the system.
- Allows installation of glass up to 20 mm.
- With the design it has, it saves space.
- In the sequential arrangement of the products, it eliminates the problem of obliqueness.

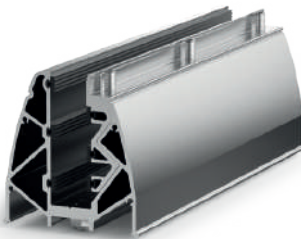
Criteria	Value
SafetyLoad	1.7
LineLoad	50 Lbs (225 N)
Pressure	200 Lbs (890 N)
CertifiedPressure	2.2kN
AdviceHeight	Upto150cm(59'1/1")
Alignment Capacity	-
Distance/s	-



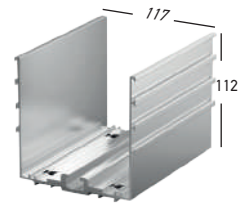
The Alusmart Series railing system is ideal for both indoor and outdoor applications. The most frequently used areas are hotels, public spaces, public buildings, offices, houses with modern design and villas.



■ **500-101**
Glass Base Set-15 Cm



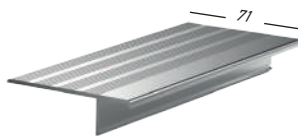
■ **500-102**
Glass Base Set-30 Cm



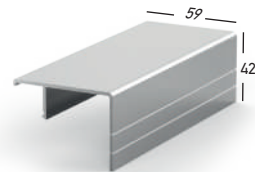
■ **2980**
U Profile For Base (6 meters)



■ **2984**
Adjustment Profile (6 meters)

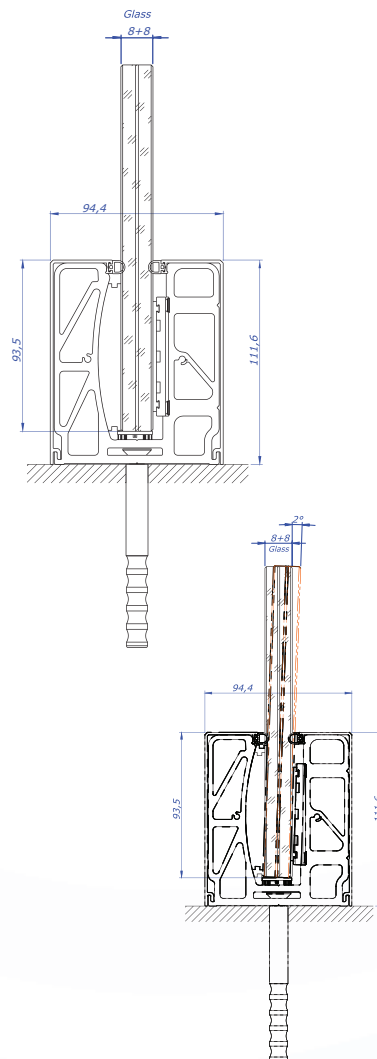


■ **2983**
Ground Cover Profile (6 meters)



■ **6068**
Top Cover Profile (6 meters)

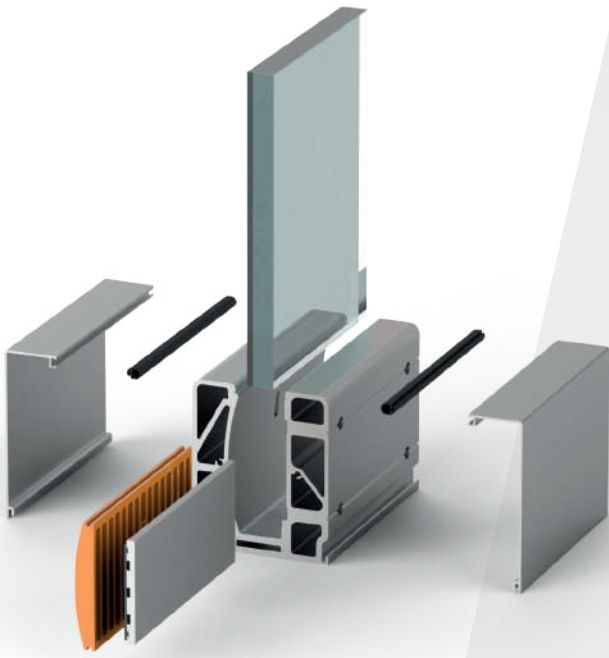
A11 SERIES



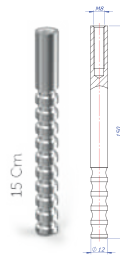
Alusmart A11 System allows to use the system in all unbalanced and problematic surfaces.

- Allows to align the glass approximately 3° on both sides with its unique plastic structure inside.
- Each glass base sets has glass alignment apparatus inside.
- 500-112 A11 type has 2 separate glass alignment apparatus to align 2 glasses where they meet.
- Suitable with 8+8mm laminated glass.
- High structural strength provides maximum security.
- Zero deformation thanks to the glass compression devise.
- Especially for residences, workplaces, hotels, public areas and stadiums.

Criteria	Value
SafetyLoad	1.2
LineLoad	50 Lbs (225 N)
Pressure	200 Lbs (890 N)
CertifiedPressure	2.2kN
AdviceHeight	Up to 120 cm (47 1/2")
AlignmentCapacity	+/- 1.5°
Distance/s	-



500-015
Anchor M8



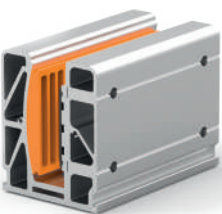
500-016
Anchor M8



500-018
Inox Screw M8



500-116
Rubber Wick



500-111
Glass Base Set-15 Cm



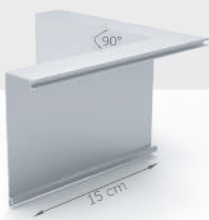
500-112
Glass Base Set-30 Cm



500-113
Endcap



6145
Cover Profile (6 meters)



500-114
90° Inner Corner For 6145



500-115
90° Outer Corner For 6145

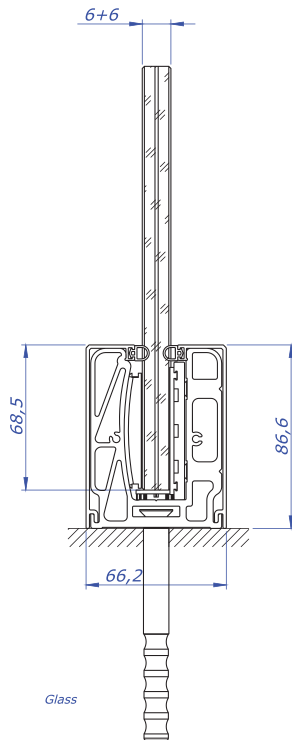


500-116
45° Inner Corner For 6145



500-117
45° Outer Corner For 6145





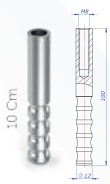
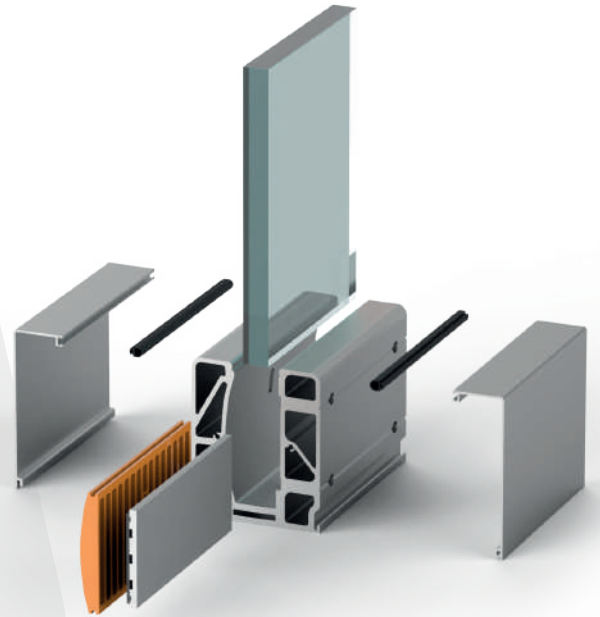
Glass



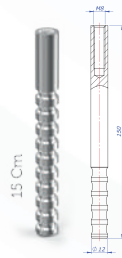
Alusmart A12 System allows you to easily mount the system on all unstable and problematic surfaces.

- Allows to align the glass approximately 3° on both sides with its unique plastic structure inside.
- A12 is suitable with 6+6 mm laminated glass and suitable for private houses, workplaces, hotels, public areas, stadiums and so on.
- Each glass base sets has glass alignment apparatus inside.
- 500-122 type has 2 separate glass alignment apparatus to align 2 glasses where they meet.
- Suitable with 6+6mm laminated glass.
- High structural strength provides maximum security.
- Zero deformation thanks to the glass compression devise.
- Especially for residences, workplaces, hotels, public areas and stadiums.

Criteria	Value
SafetyLoad	1.0
LineLoad	50 Lbs (225 N)
Pressure	200 Lbs (890 N)
ProovedPressure	1.3kN
AdviceHeight	Upto120cm(47' / /")
Aligment Capacity	+/- 1.5°
Distance/s	-



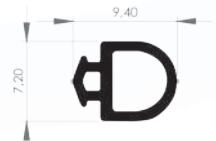
■ **500-015**
8 Metric Anchor



■ **500-016**
8 Metric Anchor



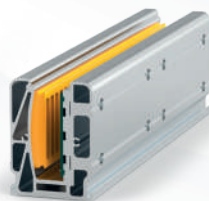
■ **500-018**
Inox Bolt M8x25



■ **500-116**
Rubber



■ **500-121**
Glass Base Set-15 Cm



■ **500-122**
Glass Base Set-30 Cm



■ **500-123**
Endcaps



■ **6142**
Cover Profile (6 meters)



■ **500-124**
90° Inner Corner For 6142



■ **500-125**
90° Outer Corner For 6142



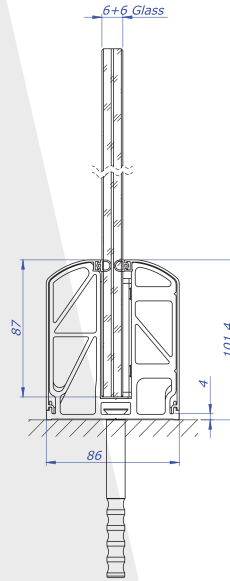
■ **500-126**
90° Inner Corner For 6142



■ **500-127**
45° Outer Corner For 6142



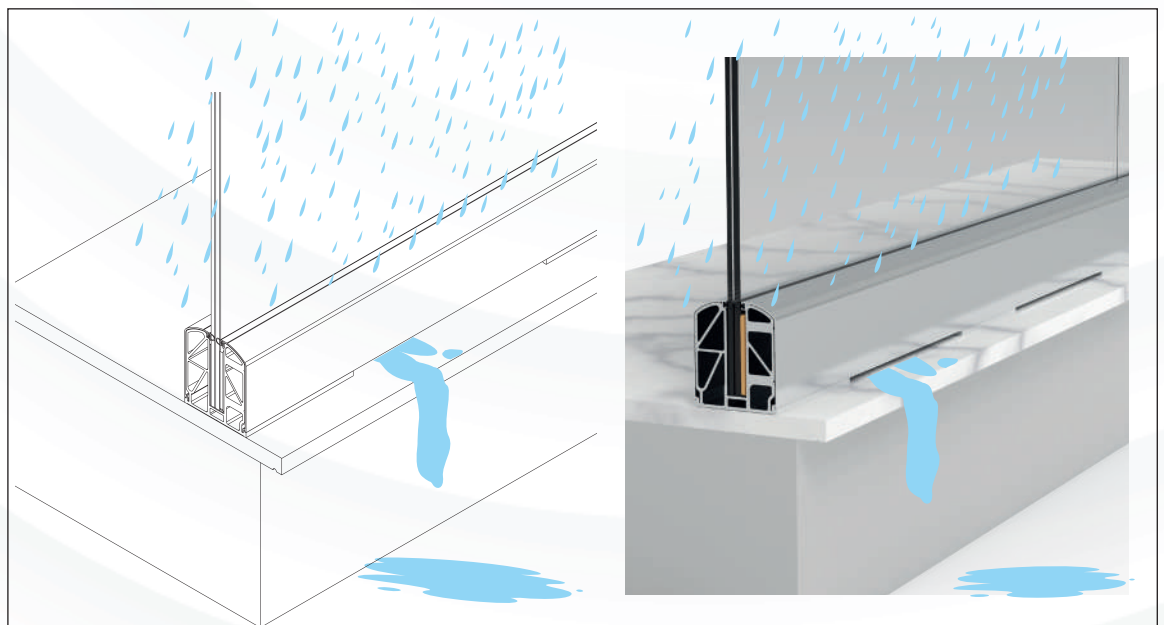
A13 SERIES

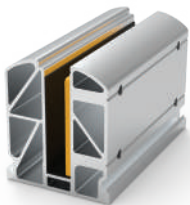
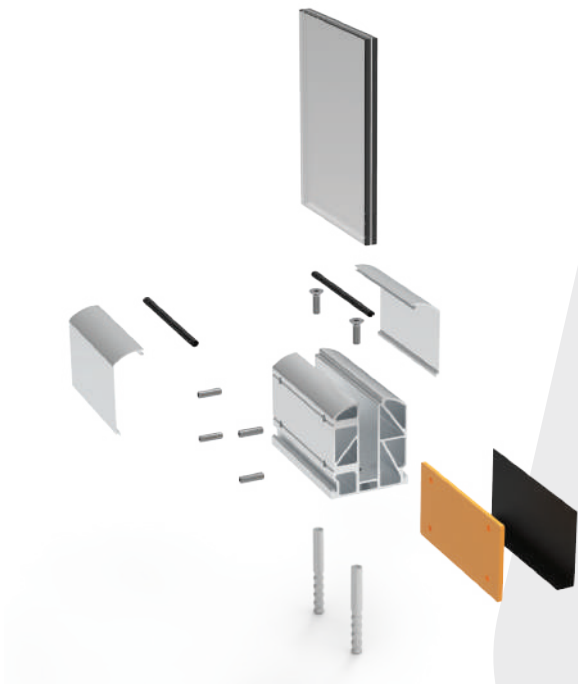


Alusmart A13 System developed for who is looking for functionality, stability and durability with aesthetic approach.

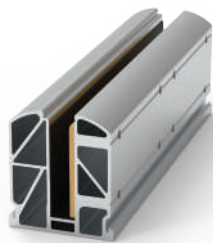
- No need a system for water drainage.
- Suitable with 6+6mm laminated glass.
- High structural strength provides maximum security.
- Zero deformation thanks to the glass compression devise.
- Especially for residences, workplaces, hotels, public areas and stadiums.

Criteria	Value
SafetyLoad	1.2
LineLoad	50 Lbs (225 N)
Pressure	200 Lbs (890 N)
CertifiedPressure	2.2kN
AdviceHeight	Upto120cm(47' / 1")
Alignment Capacity	-
Distance/s	-

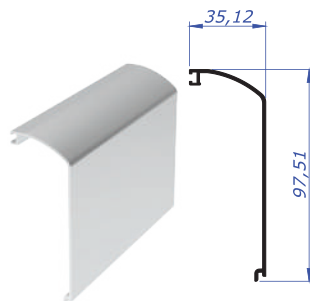




■ **500-034**
Glass Base Set-15 Cm



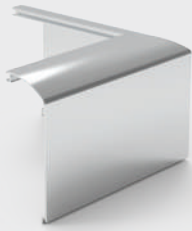
■ **500-040**
Glass Base Set-30 Cm



■ **5080**
Cover Profile (6 meters)



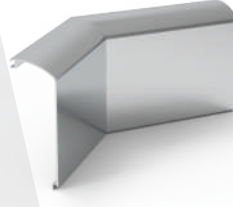
■ **500-045**
Endcaps



■ **500-128**
90° Outer Corner for 5080



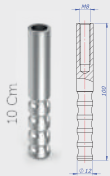
■ **500-129**
90° Inner Corner for 5080



■ **500-130**
45° Inner Corner for 5080



■ **500-131**
45° Outer Corner for 5080



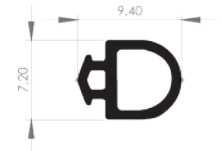
■ **500-015**
Anchor M8



■ **500-016**
Anchor M8

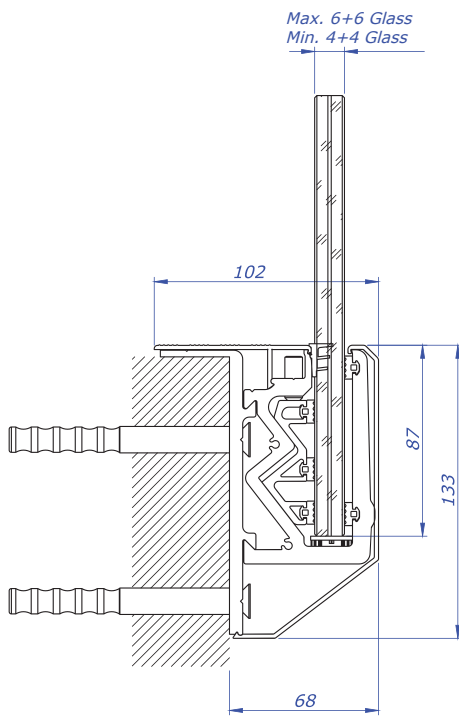


■ **500-018**
Inox Screw M8



■ **500-116**
Rubber Wick

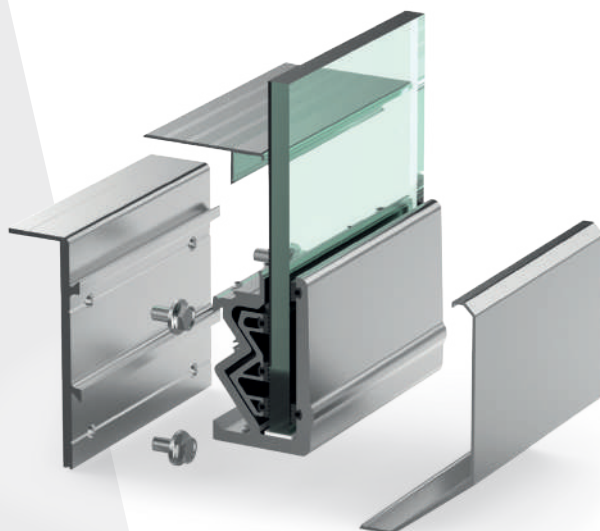




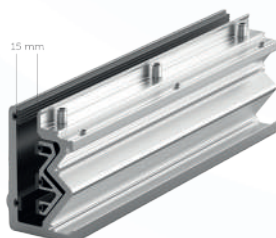
Alusmart A30 System; the outer cover can be connected without profiling glass mounting, and no extra operation is required.

- High Structural strength
- Space-saving minimalist design
- High resistance to deformation provides high safety to the system
- Allows installation of glass up to 8 mm or 12 mm

Criteria	Value
SafetyLoad	1.2
LineLoad	50 Lbs (225 N)
Pressure	200 Lbs (890 N)
ProovedPressure	1.5kN
AdviceHeight	Upto120cm(47' / ")
Alignment Capacity	-
Distance/s	-



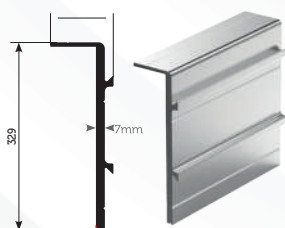
■ **500-301**
Glass Base Set 15 cm



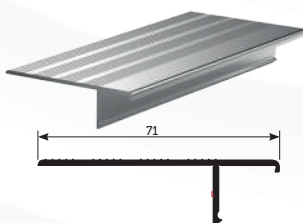
■ **500-302**
Glass Base Set 30 cm



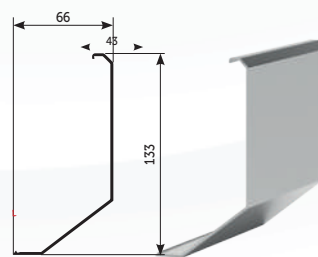
■ **500-303**
Endcap



■ **2977**
Base Carrier Profile (6 meters)



■ **2983**
Top Cover Profile (6 meters)



■ **2979**
Front Cover Profile (6 meters)



■ **500-304**
90° Outer Corner For 2979



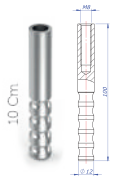
■ **500-305**
90° Inner Corner For 2979



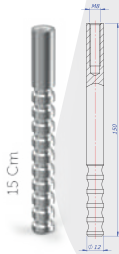
■ **500-306**
45° Outer Corner For 2979



■ **500-307**
45° Inner Corner For 2979



■ **500-015**
Anchor M8



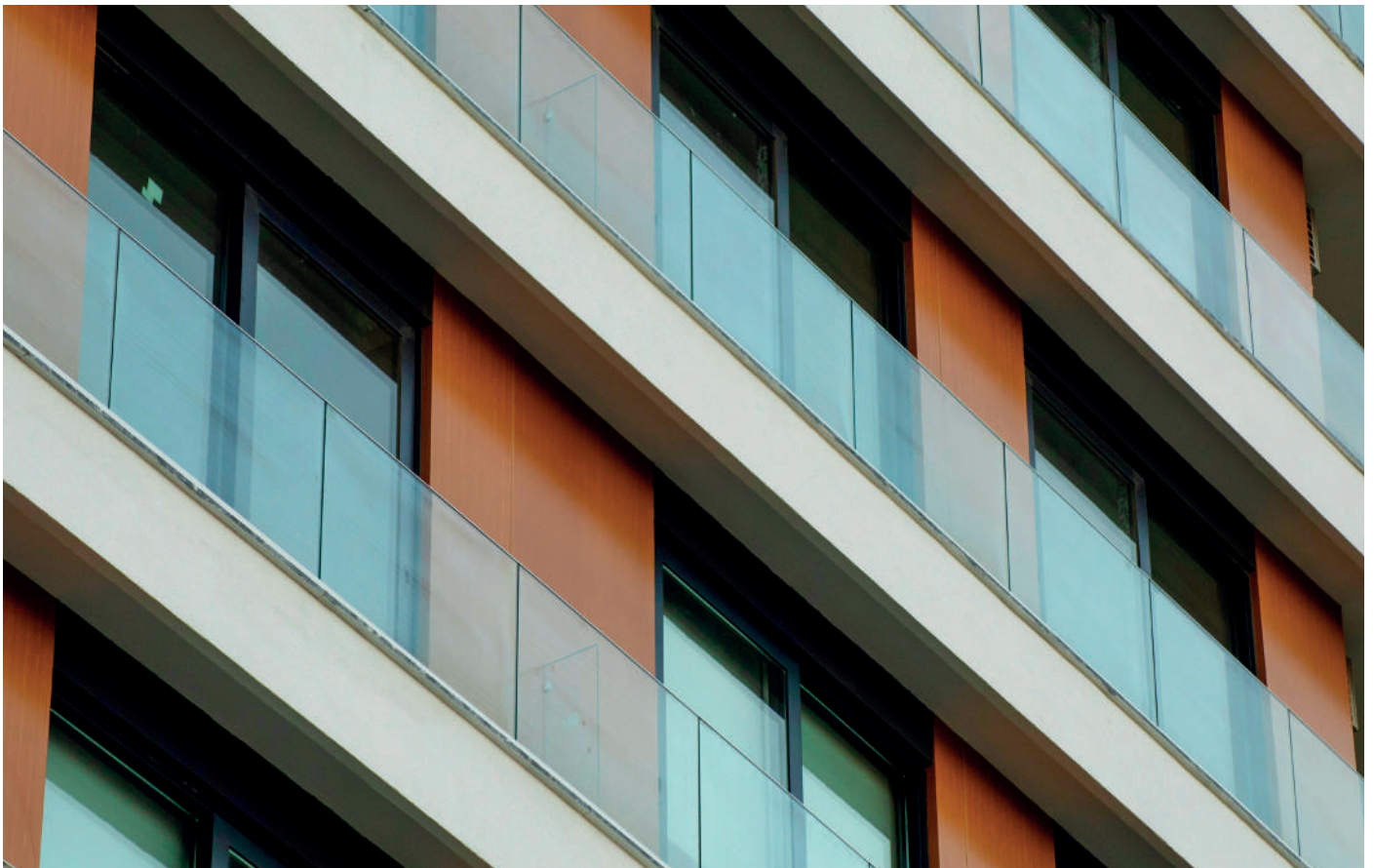
■ **500-016**
Anchor M8



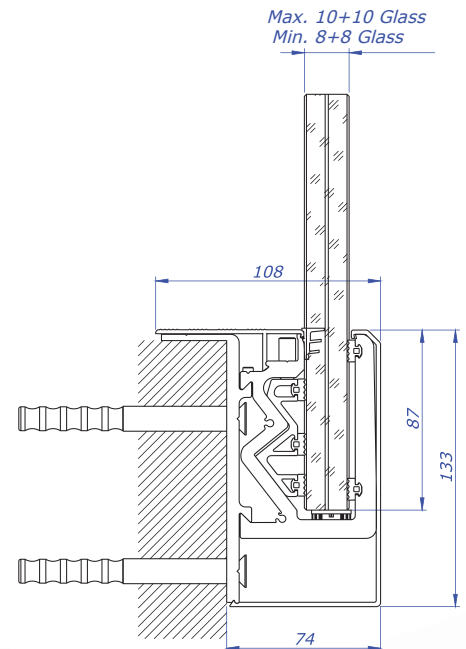
■ **500-018**
Inox Screw M8



■ **500-001**
Rubber Wick



A31 SERIES



Alusmart A31 System is different than other systems with the outer cover can be installed from inside before mounting the glasses and no extra operation required.

- High resistance to deformation provides high safety to the system.
- Glass compression device is aluminium with planar surface.
- Allows installation of glass up 8+8mm tp 10+10mm laminated glass.
- Space-saving minimalist design.

Criteria	Value
SafetyLoad	1.2
LineLoad	50 Lbs (225 N)
Pressure	200 Lbs (890 N)
CertifiedPressure	2.2kN
AdviceHeight	Upto120cm(47'11")
Aligement Capacity	-
Distance/s	-



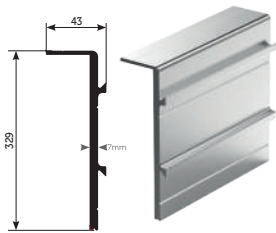
■ **500-311**
Glass Base Set-15 Cm



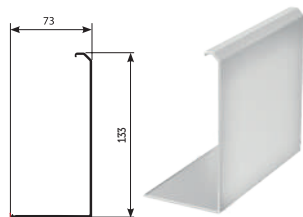
■ **500-312**
Glass Base Set-30 Cm



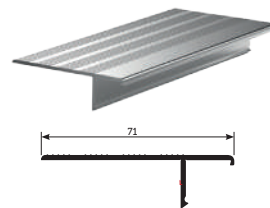
■ **500-313**
Endcap



■ **2977**
Base Carrier Profile (6 meters)



■ **6147**
Front Cover Profile (6 meters)



■ **2983**
Top Cover Profile (6 meters)



■ **500-001**
Rubber Wick

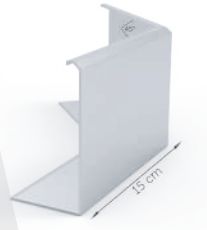
A31
SERIES



■ **500-314**
90° Outer Corner For 6147



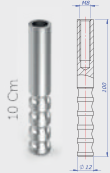
■ **500-315**
90° Inner Corner For 6147



■ **500-316**
45° Outer Corner For 6147



■ **500-317**
45° Inner Corner For 6147



■ **500-015**
Anchor M8

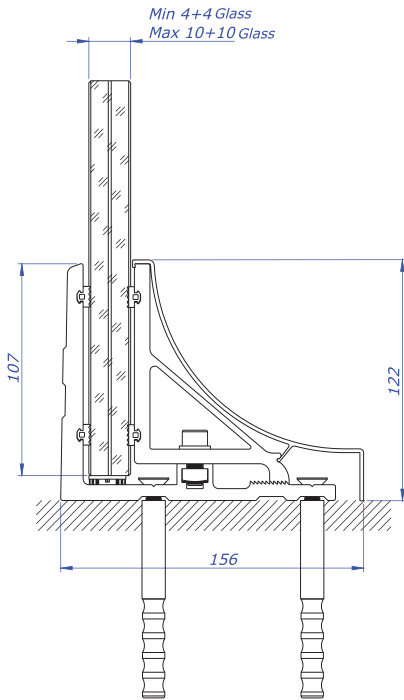


■ **500-016**
Anchor M8



■ **500-018**
Inax Screw M8





Alusmart A40 System is highly recommended for stadiums, auditoriums, theatres, terraces, hotel roofs, schools and more... with its C3-C4 Classification.

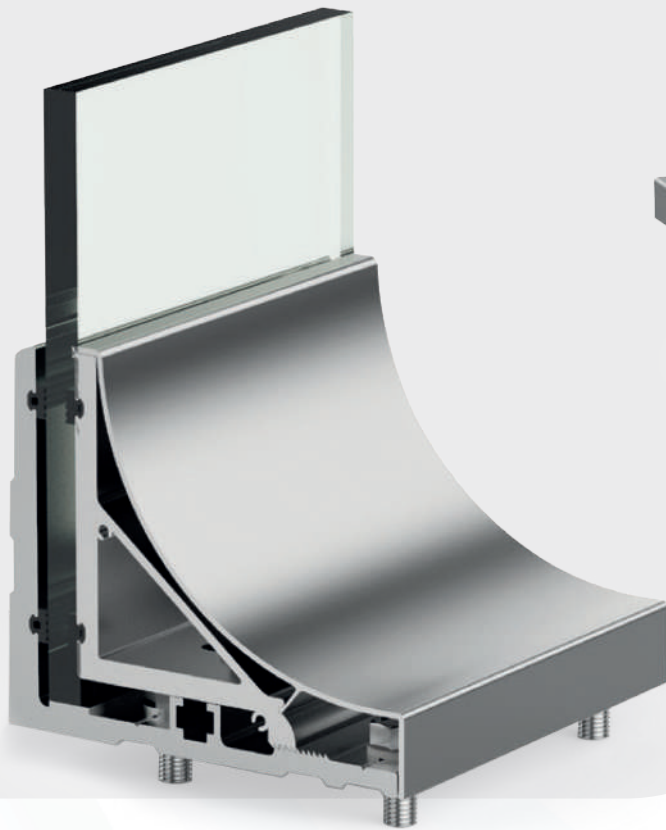
- Allows installation of glass up to 20mm.
- Thanks to its curved inner cover profile, it prevents children from reaching the carrier.
- High structural strength, profile design provides maximum security.
- Easy installation saves workmanship and time.
- Because of the glass compression device is made planar and aluminium profile, it does not deform in use for many years and provides high inertia to the system.
- Space-saving minimalist design

A40 Qualified to get C3-C4 Classification!

Areas where people may congregate and are susceptible to overcrowding.

According to international norms A40 Serie can be used on: theatres, stadiums, cinemas, discotheques, auditoriums, assemble areas and bars and the like.

Criteria	Value
SafetyLoad	2.0
LineLoad	50 Lbs (225 N)
Pressure	200 Lbs (890 N)
CertifiedPressure	3.0kN
AdviceHeight	Upto120cm(47' / 1")
Alignement Capacity	-
Distance/s	-



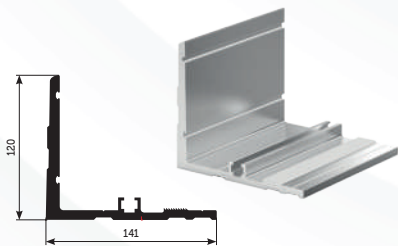
■ 500-401
Glass Base Set-15 Cm



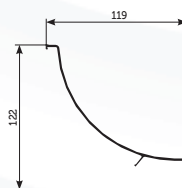
■ 500-402
Glass Base Set-30 Cm



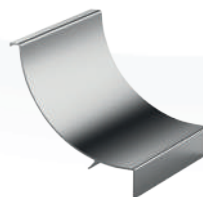
■ 500-403
Endcap



■ 2990
Side Base Profile (6 meters)



■ 2988
Cover Profile (6 meters)



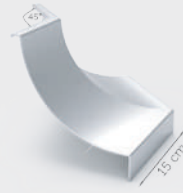
■ 500-002
Rubber Wick



■ **500-404**
90° Outer Corner For 2988



■ **500-405**
90° Inner Corner For 2988



■ **500-406**
45° Outer Corner For 2988



■ **500-407**
45° Inner Corner For 2988



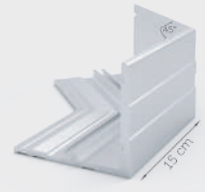
■ **500-408**
90° Outer Corner For 2990



■ **500-409**
90° Inner Corner For 2990



■ **500-410**
45° Outer Corner For 2990



■ **500-411**
45° Inner Corner For 2990

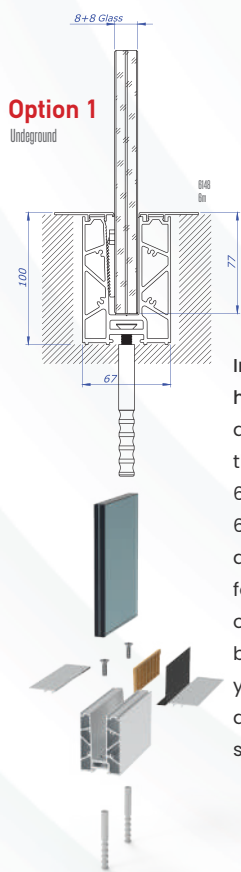




Alusmart A50 System developed by our engineers to offer you different installation options such as :

- Partial and full set use according to the project.
- Favorite for projects which need options and high quality.
- High quality with High resistance.
- Offers to install 6+6mm and 8+8mm laminated glass with compression apparatus.

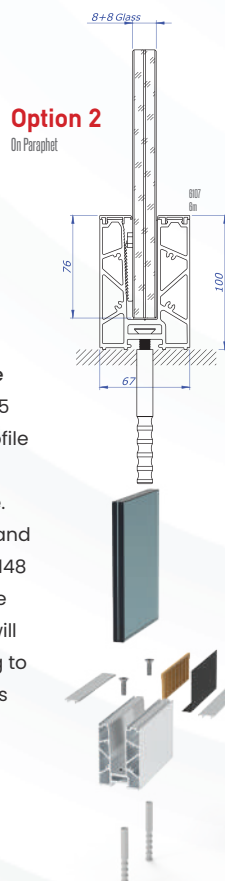
Criteria	Value
SafetyLoad	1.7
LineLoad	50 Lbs (225 N)
Pressure	200 Lbs (890 N)
CertifiedPressure	1.3kN
AdviceHeight	Upto120cm(47' / ")
Alignment Capacity	-
Distance/s	-



Option 1

Underground

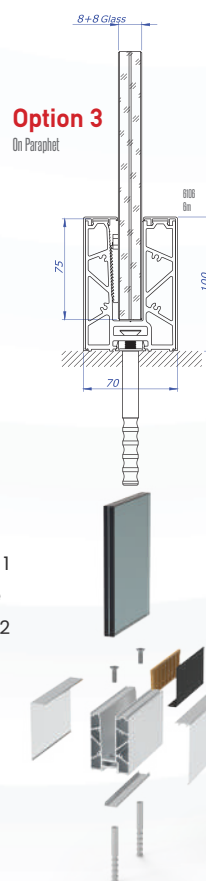
In this application, we have to combine: 6105 as 6-meter whole profile then we need 6148 as 6-meter whole profile. 6148 will be polished and anodized. (2 pieces 6148 for 1 piece 6105) Inside of the system, there will be 500-012 according to your glass dimensions due to tighten and secure the glass.



Option 2

On Parapet

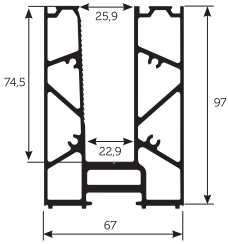
In this application, we have to combine: 6105 as 6-meter whole profile and 6107 as 6-meter whole profile. Both 6105 and 6107 will be polished and anodized. (2 pieces 6107 for 1 piece 6105) For Inside of the system, there will be 500-012 according to your glass dimensions due to tighten and secure the glass. If your Project is not Wall to Wall, also 500-503 will include as an endcap.



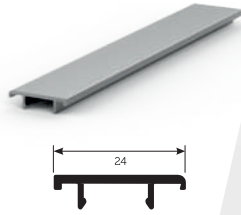
Option 3

On Parapet

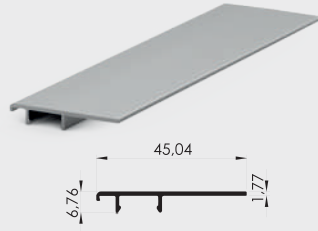
In this application, we have to combine: 2911 as 6-meter whole profile due to aligning the system. 500-101 and 500-102 according to your glass and Project dimensions. (500-101 and 500-102 has plastic compression sets inside) On the last step, 6106 as 6-meter whole profile due to cover profile. This product will be polished and anodized. Also, if your Project is not Wall to Wall, you will need 500-503 as an endcap.



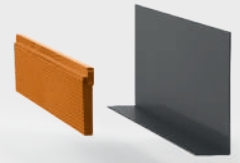
■ **6105**
Glass Base Profile (6 meters)



■ **6107**
Top Cover Profile (6 meters)



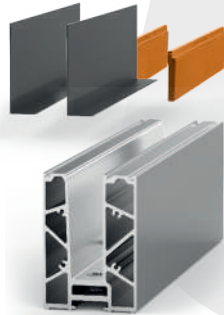
■ **6148**
Ground Cover Profile (6 meters)



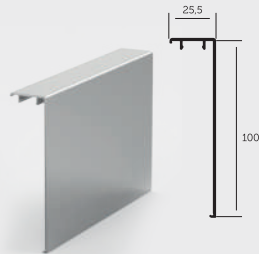
■ **500-012**
Plastic Compression Set



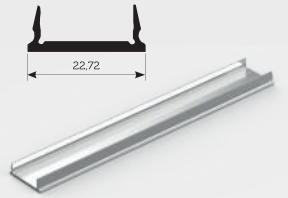
■ **500-501**
Glass Base Set-15 Cm



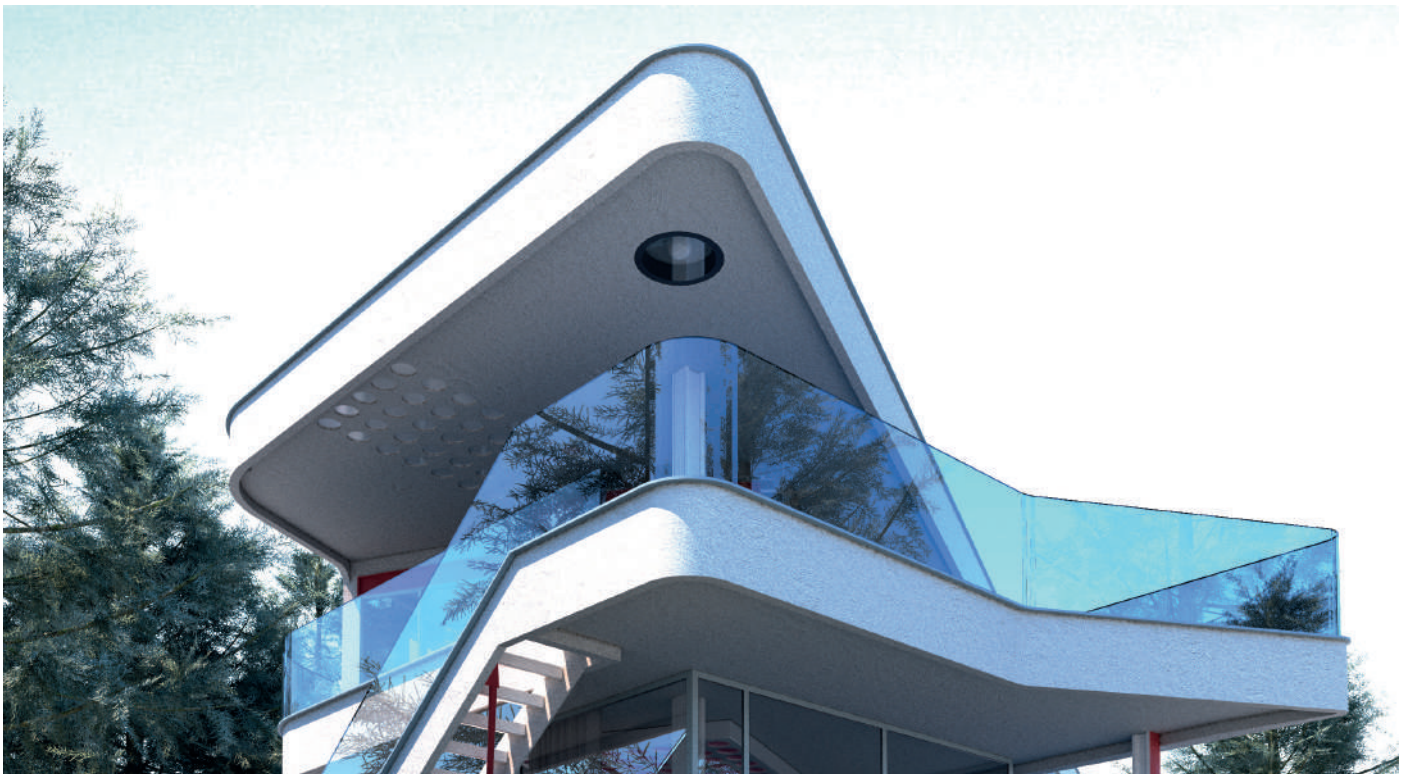
■ **500-502**
Glass Base Set-30 Cm



■ **6106**
Cover Profile (6 meters)



■ **2911**
Align Profil (6 meters)





500-503
Endcap



500-504
90° Outer Corner For 6106



500-505
90° Inner Corner For 6106



500-506
45° Outer Corner For 6106



500-507
45° Inner Corner For 6106



500-508
90° Inner Corner For 6105



500-509
90° Outer Corner For 6105



500-510
45° Inner Corner For 6105



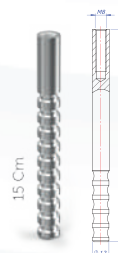
500-511
45° Outer Corner For 6105



500-028
Plastic Compression
Apparatus For 6+6 mm Glass



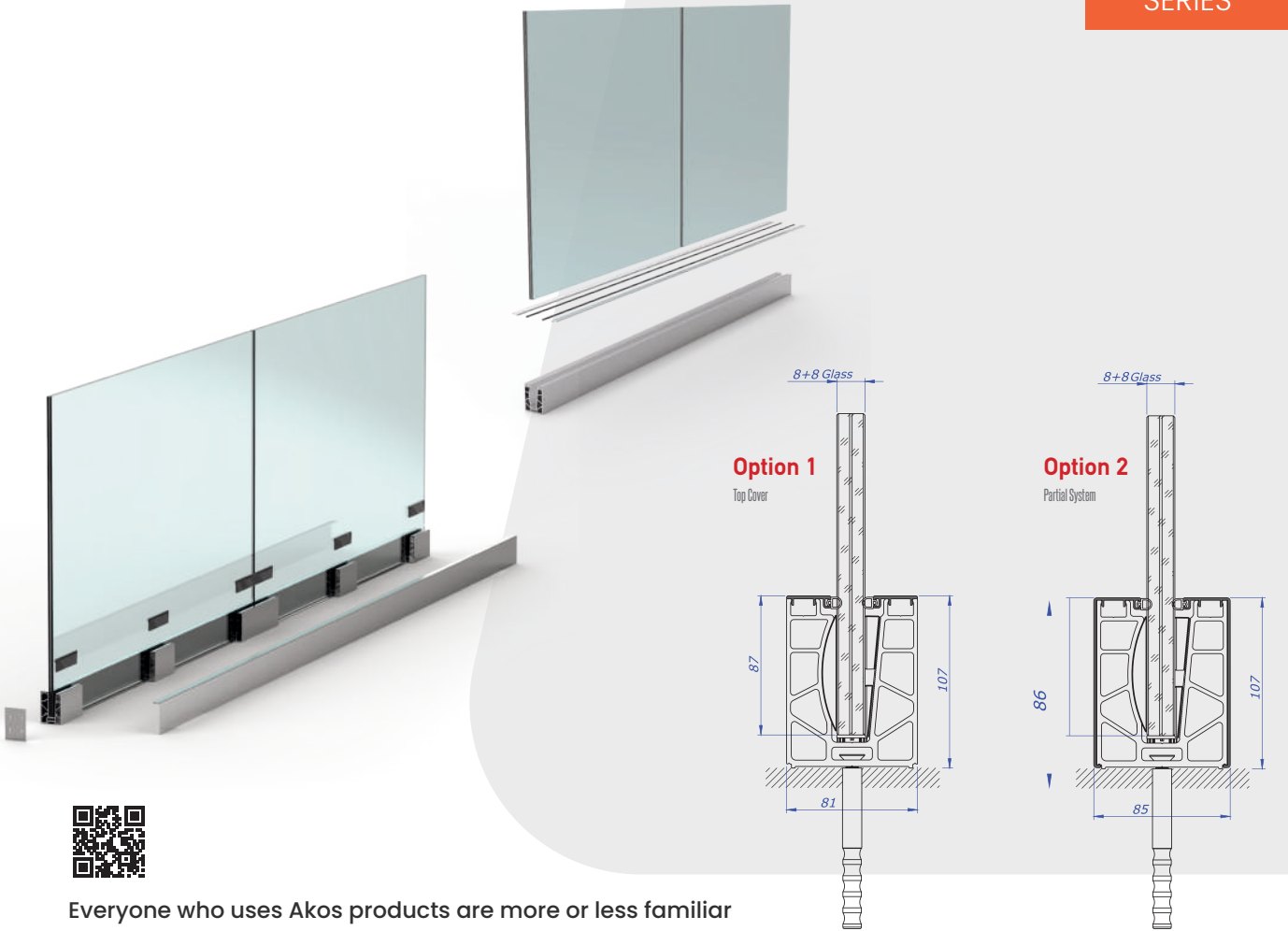
500-001
Rubber Wick



500-016
Anchor M8



500-018
Inox Screw M8



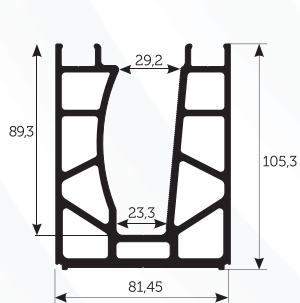
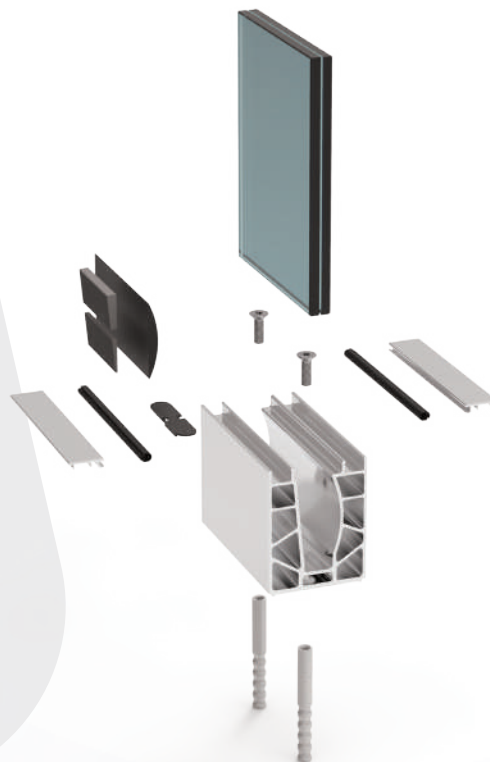
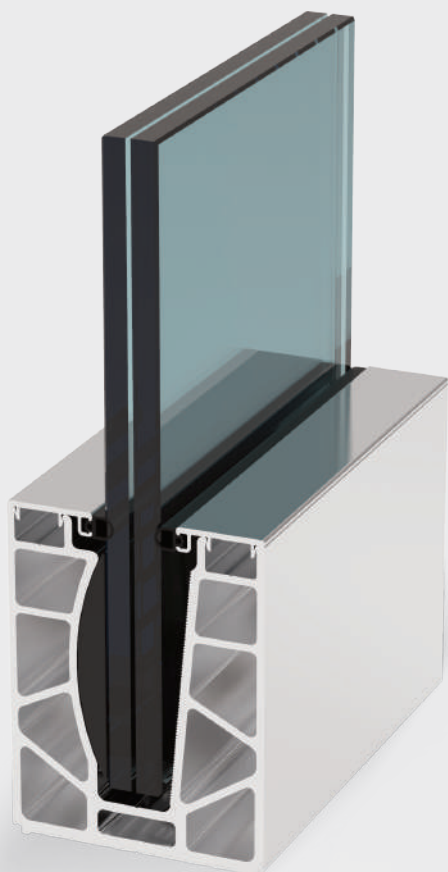
Everyone who uses Akos products are more or less familiar with the operation logic of our Alusmart A11 system. The A51, which we developed since 2020, combined the operation logic of A11 with the usage of 6 meters of profile. It is possible to balance the glass to be used in the project with A51 on problematic surfaces that need to be adjusted to the glass.

With its unique plastic structure inside, allows us to align the glass approximately 3° total. Also 6 meter whole profile usage makes the montage process even easier. As a standard, the A51 system has been developed for 8 + 8 laminated glass, which is commonly used in European Countries. It offers maximum robustness and maximum safety in such uses.

Also with the unique plastic thickening apparatus, A51 system is suitable with 6+6 laminated glasses as well. It is also possible to use this system in pieces with the cover profile to be used outside. In this way, there will be a decrease in costs. Even so, the system offers greater strength than its competitor's thanks to its thick profile structure.

The A52 system will be the best solution for anyone who is solution-oriented and cares about time. While the A52 system provides maximum durability with minimum labor, it is also a system that can be used in any project thanks to the glass adjustment.

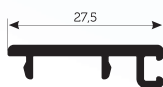
Criteria	Value
SafetyLoad	2.0
LineLoad	50 Lbs (225 N)
Pressure	200 Lbs (890 N)
CertifiedPressure	3.0kN
AdviceHeight	Upto120cm(47'11")
Alignment Capacity	-
Distance/s	-



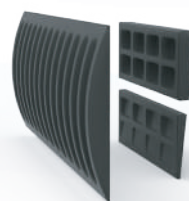
■ **6110**
Glass Base Profile (6 meters)



■ **6111**
Cover Profile (6 meters)



■ **6112**
Top Cover Profile (6 meters)



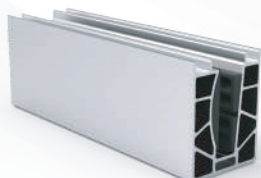
■ **500-553**
Plastic Compression Set



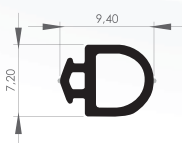
■ **500-554**
Endcap



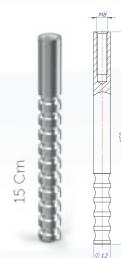
■ **500-551**
Glass Base Set-15 Cm



■ **500-552**
Glass Base Set-30 Cm



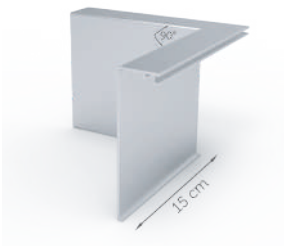
■ **500-116**
Rubber



■ **500-016**
Anchor M8



■ **500-018**
Inox Screw M8



■ **500-555**
90° Outer Corner For 6111



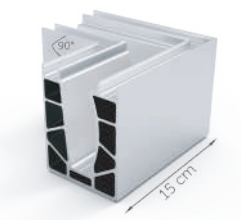
■ **500-556**
90° Inner Corner For 6111



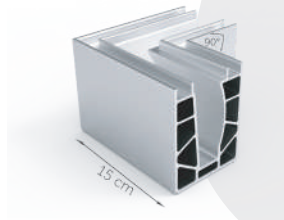
■ **500-557**
45° Outer Corner For 6111



■ **500-558**
45° Inner Corner For 6111



■ **500-559**
90° Inner Corner For 6110



■ **500-560**
90° Outer Corner For 6110

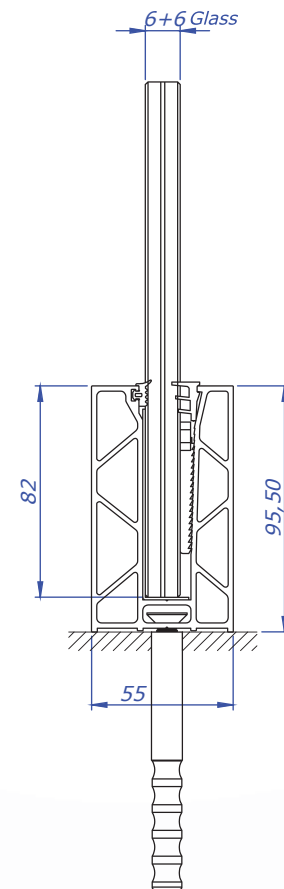


■ **500-561**
45° Inner Corner For 6110



■ **500-562**
45° Outer Corner For 6110



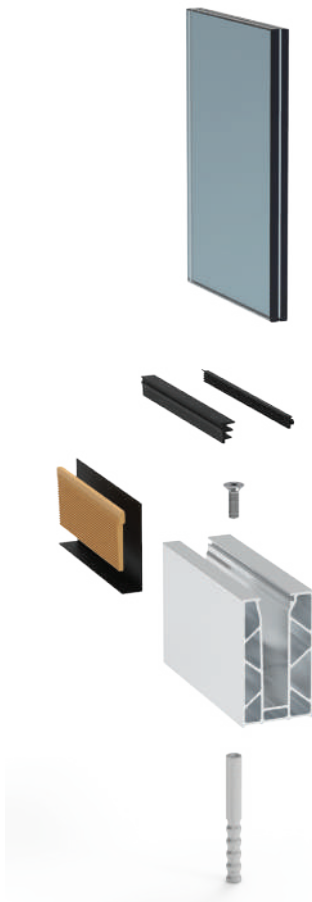


Brand new A52 provides to use 6 meter whole profile system with 6+6 laminated glasses. Also with the unique plastic thickening apparatus, A52 suitable with 5+5 laminated glasses as well. In this way, project owners will save on both glass costs and glass supporter costs.

Thanks to its small but maximum durability profile structure, A52 is the most robust glass supporter system with minimum costs. Another advantage of our A52 system is that it takes up less space from the space on the balconies thanks to its tiny structure. In this way, it also offers the best solution for small balconies.

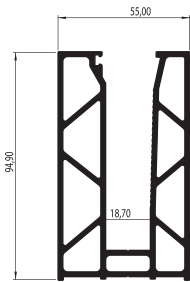
As a result, A52 will offer the most suitable solution for all project owners who want to achieve maximum benefits with minimum costs.

Criteria	Value
SafetyLoad	1.0
LineLoad	50 Lbs (225 N)
Pressure	200 Lbs (890 N)
CertifiedPressure	1.3kN
AdviceHeight	Upto120cm(47' / 1")
Alignement Capacity	-
Distance/s	-

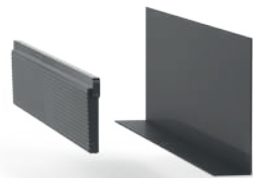


Alusmart A52 System is the best solution for everyone who is solution oriented and want to achieve maximum benefits with minimum cost.

- Allows the use of the entire 6-meter profile system with 6+6mm laminated glasses
- Provides maximum durability with minimum cost
- System is suitable to any project with its glass adjustment



■ **4044**
 A52 Glass Base
 Profile - 6 Meters



■ **500-012**
 Plastic Compression
 Set



■ **500-028**
 Plastic Compression
 Apparatus For 5+5 mm Glass



■ **500-525**
 Endcap

A52
SERIES



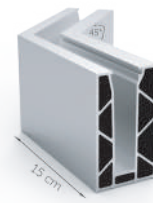
■ 500-521
90° Inner Corner For 4044



■ 500-522
90° Outer Corner For 4044



■ 500-523
45° Inner Corner For 4044



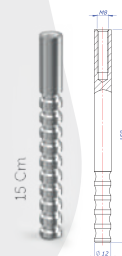
■ 500-524
45° Outer Corner For 4044



■ 500-792
Rubber Wick



■ 500-001
Rubber Wick

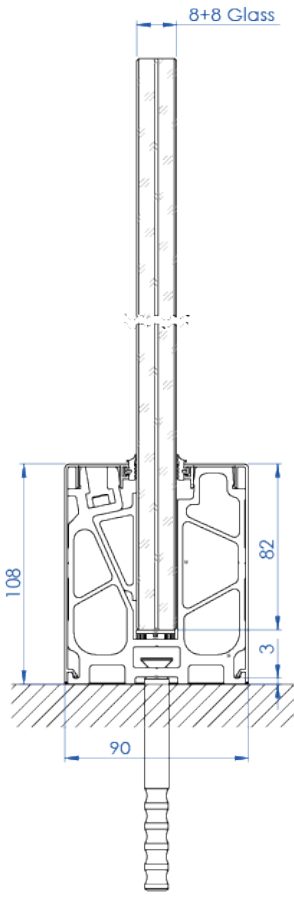


■ 500-016
Anchor M8



■ 500-018
Inox Screw M8



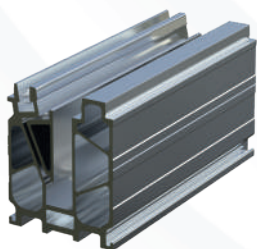
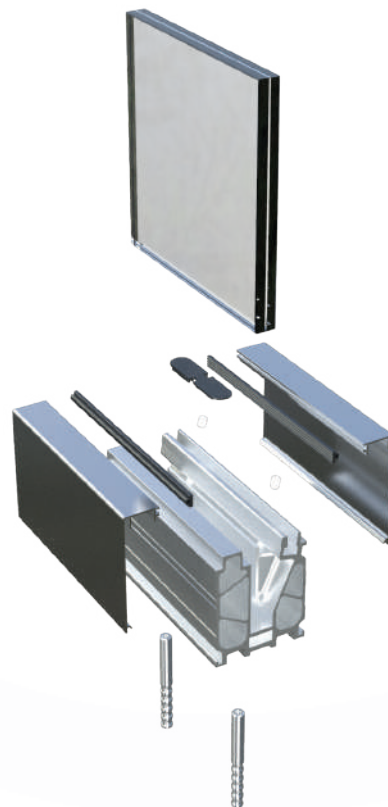


Brand New Alusmart A53 System

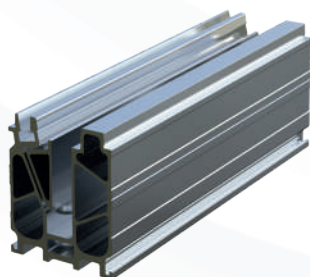
A53 system provides you comfort in assembly and installation with its privileged designs and logical complete Aluminum solutions.

- Ability of upper screw tightening.
- Non-Plastic complete Aluminium System for assurance of different temperature reflections.
- Ready Cover sets of 90° and 45° angled for corners.

Criteria	Value
SafetyLoad	1.7
LineLoad	50 Lbs (225 N)
Pressure	200 Lbs (890 N)
CertifiedPressure	1.3kN
AdviceHeight	Upto120cm(47' //")
Alignment Capacity	-
Distance /s	-



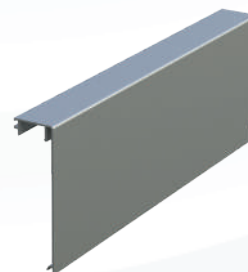
■ **500-530**
Glass Base Set 15cm



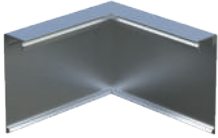
■ **500-531**
Glass Base Set 30 cm



■ **500-536**
Endcap



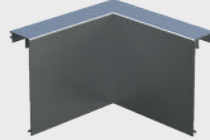
■ **30112**
Cover Profile (6 Meters)



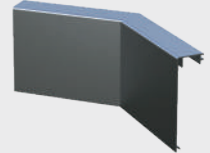
■ **500-532**
90° Outer Corner For 30112



■ **500-533**
45° Outer Corner For 30112



■ **500-534**
90° Inner Corner For 30112



■ **500-535**
45° Inner Corner For 30112



■ **500-792**
Rubber



■ **500-001**
Rubber

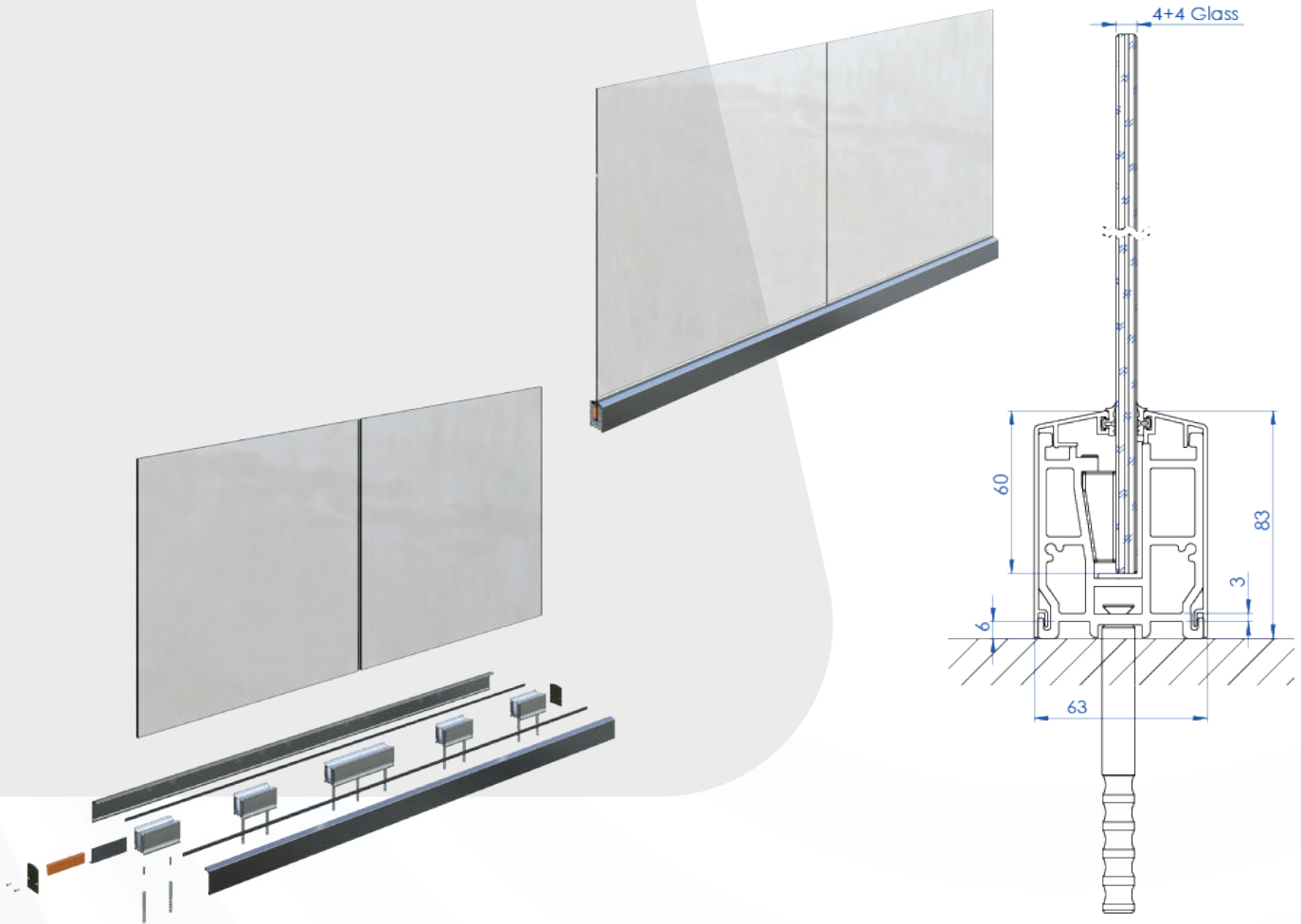


■ **500-016**
Anchor M8



■ **500-018**
Inox Screw M8



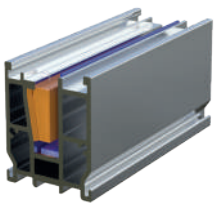
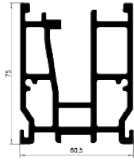


Brand New Alusmart A54 System

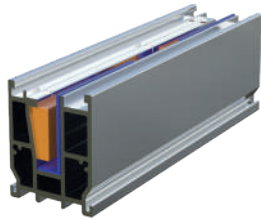
A54 system provides you comfort in assembly and installation with its privileged designs and different glass thickness advantages by different tightening equipments.

- 3 different Glass Thickness adaptation kits.
- Ready Inner & Outer Cover sets of 90° and 45° angled for corners.

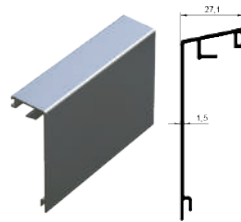
Criteria	Value
SafetyLoad	1.7
LineLoad	50 Lbs (225 N)
Pressure	200 Lbs (890 N)
CertifiedPressure	1.3kN
AdviceHeight	Upto120cm(47' / ")
Alignment Capacity	-
Distance/s	-



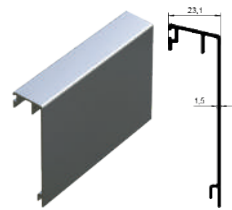
■ **500-540**
Glass Base Set 15cm



■ **500-541**
Glass Base Set 30cm



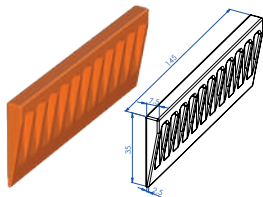
■ **550**
Cover Profile (6 Meters)



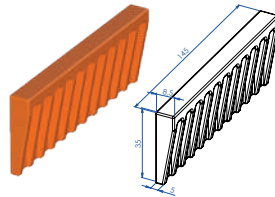
■ **551**
Cover Profile (6 Meters)



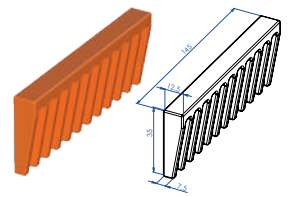
■ **500-542**
Endcap



■ **500-563**
Plastic Compression Set For
6+6 Glass



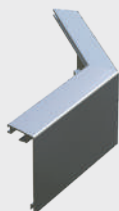
■ **500-564**
Plastic Compression Set For
5+5 Glass



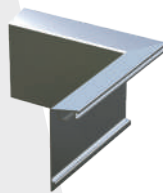
■ **500-565**
Plastic Compression Set For
4+4 Glass



■ 500-543
90° Outer Corner For 550



■ 500-544
45° Outer Corner For 550



■ 500-545
90° Inner Corner For 550



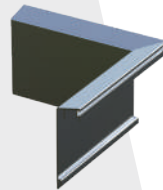
■ 500-546
45° Inner Corner For 550



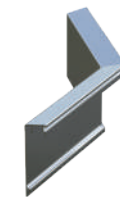
■ 500-547
90° Outer Corner For 551



■ 500-548
45° Outer Corner For 551



■ 500-549
90° Inner Corner For 551



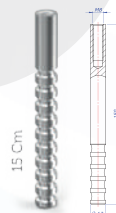
■ 500-550
45° Inner Corner For 551



■ 500-792
Rubber



■ 500-001
Rubber

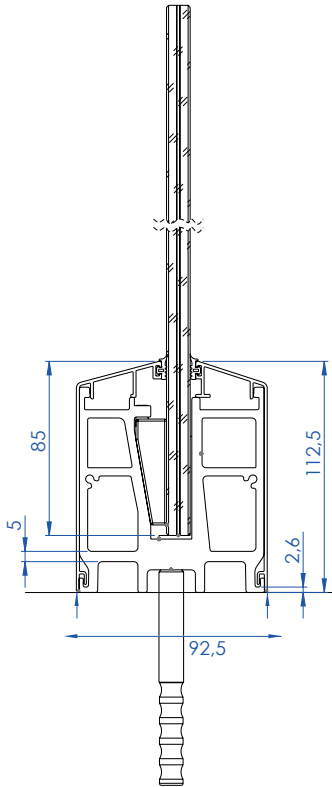


■ 500-016
Anchor M8



■ 500-018
Inox Screw M8



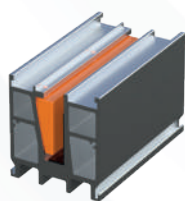
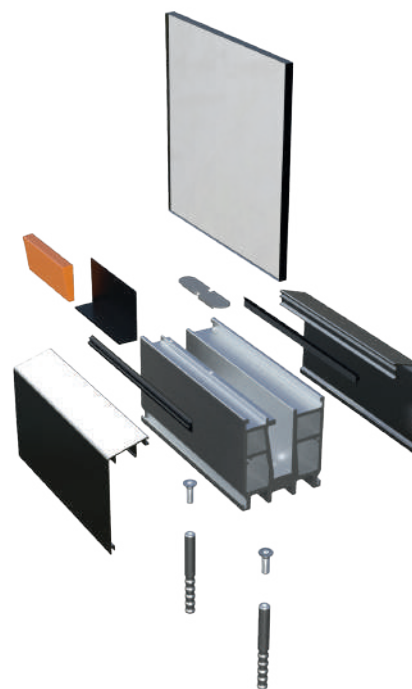
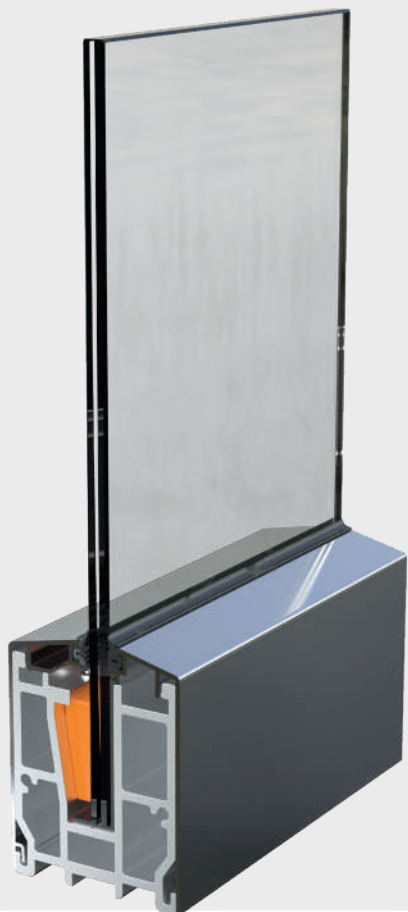


Brand New Alusmart A55 System

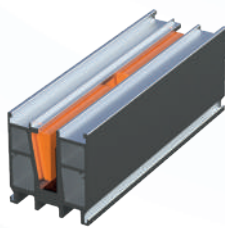
A55 system provides you comfort in assembly and installation with its privileged design and different glass thickness advantages by different tightening non-returnable equipments.

- 3 different Glass Thickness adaptation kits.
- Tightening apparatus kit locks by the profile's retainer keep strength in maximum safe of glass structure.
- Ready Inner & Outer Cover sets of 90° and 45° angled for corners.

Criteria	Value
SafetyLoad	1.7
LineLoad	50 Lbs (225 N)
Pressure	200 Lbs (890 N)
CertifiedPressure	1.3kN
AdviceHeight	Upto120cm(47' / ")
Alignment Capacity	-
Distance/s	-



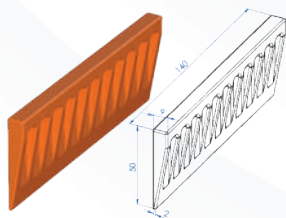
■ **500-050**
Glass Base Set 15 cm



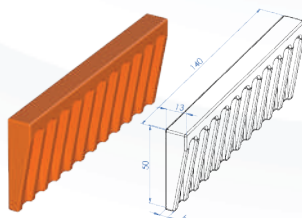
■ **500-051**
Glass Base Set 30 cm



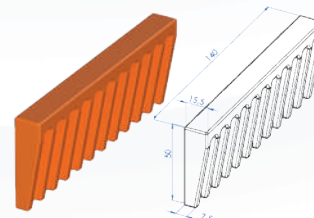
■ **500-063**
Endcap



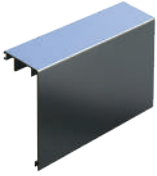
■ **500-552**
Plastic Compression Set For
8+8 Glass



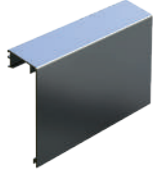
■ **500-553**
Plastic Compression Set For
6+6 Glass



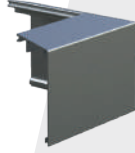
■ **500-554**
Plastic Compression Set For
5+5 Glass



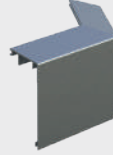
■ **500-045**
Cover Profile (6 Meters)



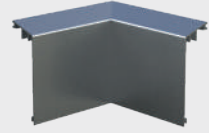
■ **500-046**
Cover Profile (6 Meters)



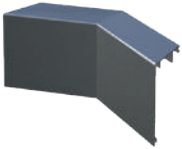
■ **500-055**
90° Outer Corner For 500-045



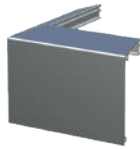
■ **500-056**
45° Outer Corner For 500-045



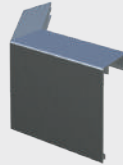
■ **500-057**
90° Inner Corner For 500-045



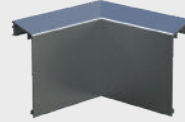
■ **500-058**
45° Inner Corner For 500-045



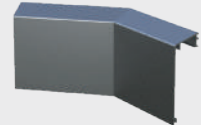
■ **500-059**
90° Outer Corner For 500-046



■ **500-060**
45° Outer Corner For 500-046



■ **500-061**
90° Inner Corner For 500-046



■ **500-062**
45° Inner Corner For 500-046



A50
SERIES



*Optional
Freedom*

A10
SERIES

*Approved
Beauty*



A31
SERIES

*Approved
Strength*



A40
SERIES

*Safety
@Danger*



A51
SERIES

*Alignement
Capability*





OTHER ACCESSORIES



■ **150-506**
50° Elbow With Glass
Channel 90°



■ **150-508**
50° Elbow With Glass
Channel 45°



■ **150-302**
50° Ground Flange
Externally Screwed



■ **150-303**
50° Wall Flange
(Double Hole)



■ **150-304**
50° Ground Flange Cover



■ **150-305**
50° Adjustable Wall Flange



■ **150-501**
50° Smart Sphere Elbow



■ **150-502**
50° Sphere Elbow
(ECO)



■ **150-503**
50° Inflate Elbow



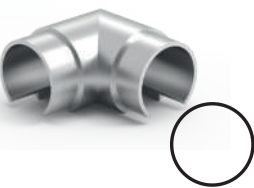
■ **150-504**
50° Inflate Elbow



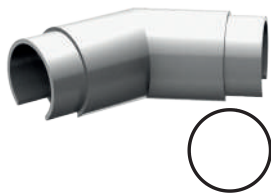
■ **150-601**
50° Smart Pipe
Connector



■ **150-603**
50° Ring (3 cm)



■ **150-518**
50° Inward Elbow With
Glass Channel 90°



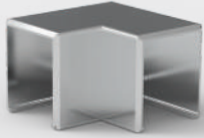
■ **150-519**
50° Inward Elbow With
Glass Channel 45°



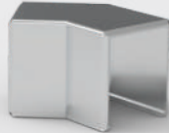
■ **150-701**
50° Plug



■ **150-704**
50° Plug With Channel



■ **230-511**
26x30 Corner 90°



■ **230-512**
26x30 Corner 45°



■ **230-301**
26x30 mm Wall Flange



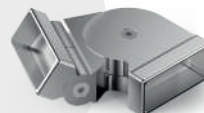
■ **230-701**
26x30 mm Square Plug



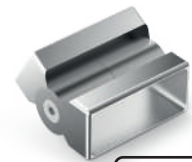
■ **260-305**
60x25 mm Wall Flange



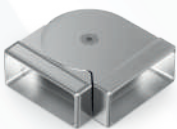
■ **260-501**
60x25 mm Square Elbow With Horizontal Moving



■ **260-502**
60x25 mm Square Elbow With One Side Moving



■ **260-503**
60x25 mm Square Elbow With Vertical Moving



■ **260-504**
60x25 mm Square Elbow With Side Moving



■ **260-508**
60x25 mm Square Elbow 90° (Middle Channel)



■ **260-509**
60x25 mm Square Elbow 45° (Middle Channel)



■ **260-702**
60x25 mm Square Plug



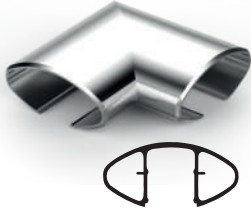
■ **260-601**
60x25 mm Ring



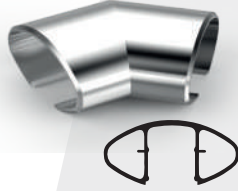
■ **260-301**
60x25 mm Wall Flange



■ **230-509**
26x30 Ring



360-513
Elliptic 60x25 Elbow 90°
(Middle Channel)



360-514
Elliptic 60x25 Elbow 45°
(Middle Channel)



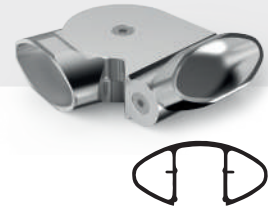
360-301
360-301 Elliptic 60x25 Wall Flange



360-701
Elliptic 60x25 Plug



360-501
Elliptic 60x25 Elbow for
Both Side Moving



360-502
Elliptic 60x25 Elbow With
One Side Moving



360-503
Elliptic 60x25 Elbow With Vertical
Moving



360-504
Elliptic 60x25 Elbow With Side Moving



360-601
Elliptic 60x25 Ring



■ 100-001
Pistol for Epoxy



■ 100-002
410 gr Epoxy Adhesive



■ 500-066
Marine Sealant



■ 100-006
Granit Cutter Tool



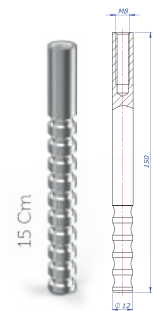
■ 500-013
Anchor M8



■ 500-014
Anchor M8



■ 500-015
Anchor M8



■ 500-016
Anchor M8



■ 500-017
15 cm Screw + Dowel



■ 500-064
M10 Clips Dowel Screw 180mm



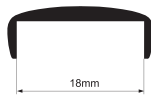
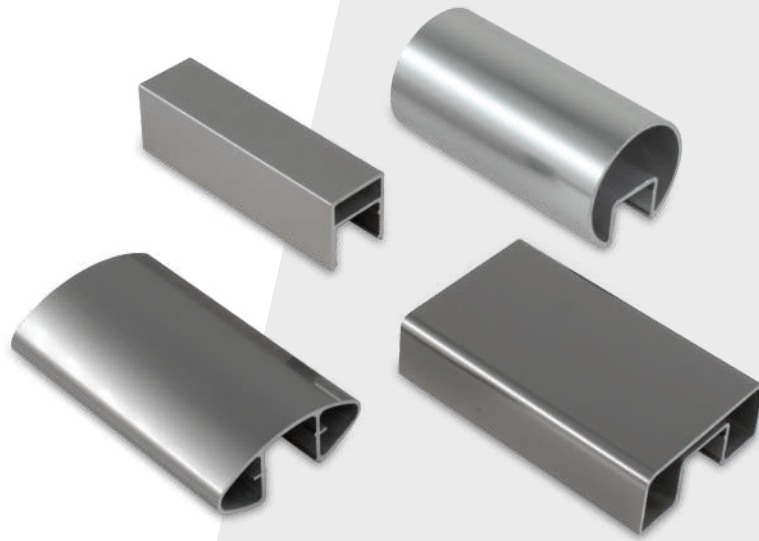
■ 500-065
M12x150mm Concrete Screw



■ 500-018
Inox Screw M8



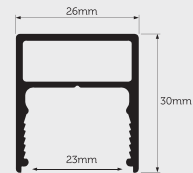
■ 500-019
Dome Nut M8



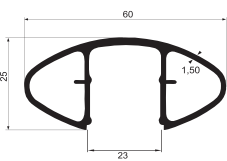
■ **2994**
Glass Cover Profile For Top



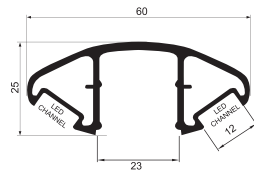
■ **2995**
Glass Cover Profile For Top



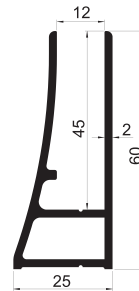
■ **6109**
Glass Cover Profile For Top 0,548 Kg/M



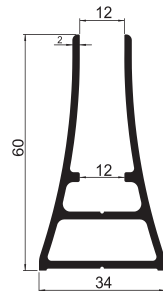
■ **08-078**
Top Handrail 60x25mm Elliptic



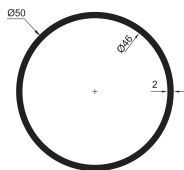
■ **6149**
Top Handrail 60x25mm
With Led Channel



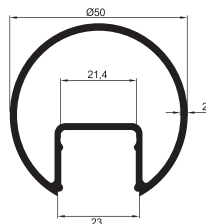
■ **2917**
Sailing Profile



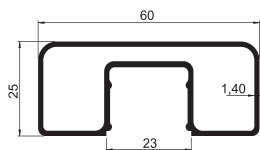
■ **2918**
Sailing Profile



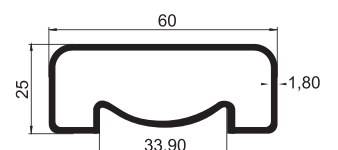
■ **2003**
Top Handrail Round



■ **2919**
Top Handrail Round for Glass



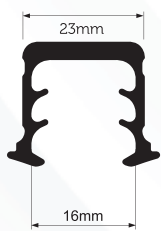
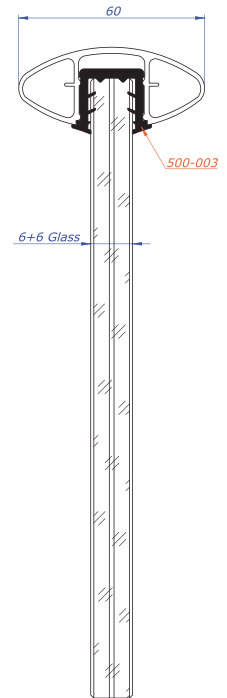
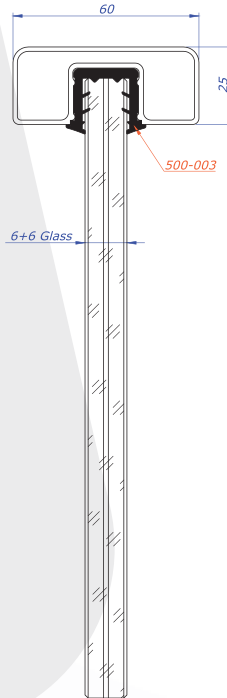
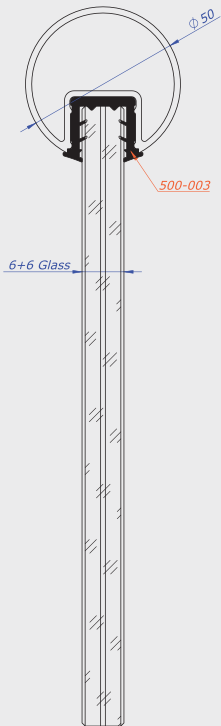
■ **2907**
Top Handrail 60x25mm Glass



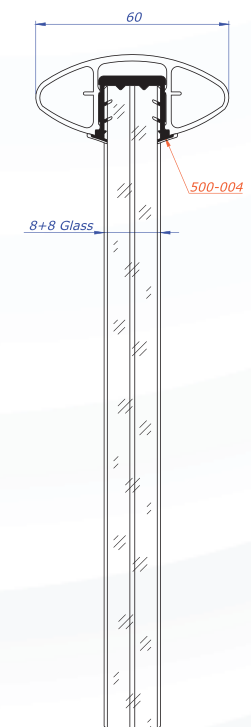
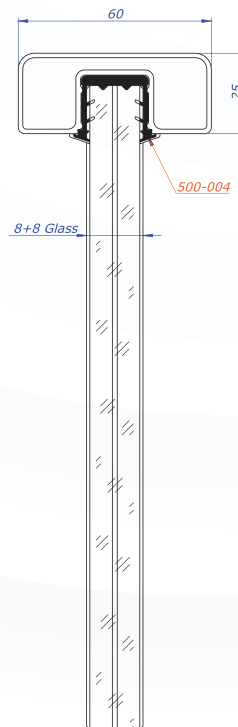
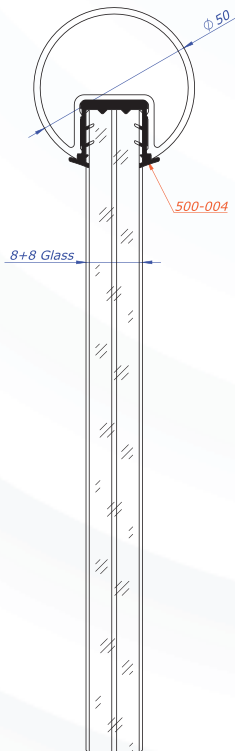
■ **2600**
Top Handrail 60x25mm



■ **500-003**
Glass Fitting Rubber Wick



■ **500-004**
Glass Fitting Rubber Wick



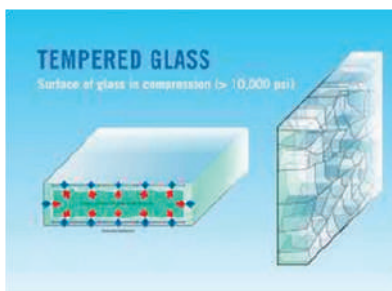


Use of glass panels in AKOS installations A wide range of glass panels can be integrated with AKOS system, in various thicknesses and characteristics according to specifications. There are two main categories according to EN12543 and EN12600 specified by the European Union concerning the thermal treatment of the glass. More specifically, EN12543 specifies the use of tempered and laminated glass with the insert of PVB membranes.



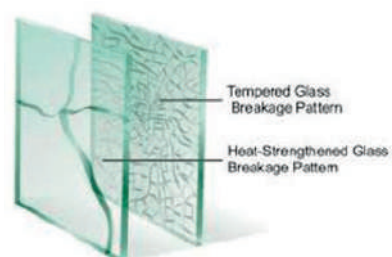
This type of glass panels has the following qualities:

a) In case of breakage, they do not break in large and sharp pieces.



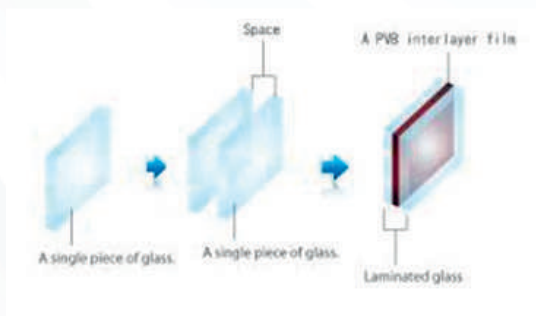
Laminated Glass TRIPLEX glass with PVB membrane

a) Even in case of such breakage, the broken glass pieces remain attached on the PVB surface without putting in danger the safety of nearby persons. The fabrication of these tempered and laminated glass panels is being carried out by thermal treatment of ordinary glass which is afterwards sandwiched together with the PVB membranes to give the various grades and thickness of laminated glass panels.





(PVB), placed in layers between the glass.
Rollers press the layers together to expel any air pockets.



Toughened Glass Thermally Toughenedglass



In the following pictures show the different types of breakage:
a) Tempered and laminated glass, and,
b) Ordinary tempered glass.
PVB films the common characteristics amongst the two categories mentioned previously, are the use of the PVB interlayer films.



The glass is then heated to 700 C in a pressurized oil bath to permanently bond all layers together. Typically, the thickness of each PVB film is 0,38 mm, additional layers of glass and PVB film increase the strength of the material. Applying two interlayers of film, the thickness becomes 0,78 mm, with three at 1,14 mm and so on. Apart from the different thickness of glass and PVB, a wide range of colored PVB, for example grey, blue green or yellow is available, offering a particular esthetic to modern buildings.

According to European Norms (EN 12600) the minimum number of films required is two, however AKOS recommends the use of glass with four PVB films for maximal security. Even in the event that the glass breaks, the two layers are held together by the PVB, allowing the sheet as a whole to bend and absorb the impact. This characteristic is especially important for places where safety or security are paramount. Types of security glasses the most common type Triplex glass consists of the combination of Heat Strengthened Glass – PVB – Heat Strengthened Glass. The result of a Heat Strengthened glass panel will resist two times stronger than ordinary glass, where a unified static force has been applied (EN 12543), to one of the same thickness. The second type of Triplex glass, and the one which meets the safety criteria is Thermally Toughened Glass, and its combination with PVB, known as toughened glass. Toughened Glass is manufactured by subjecting the finished glass size to a heating and cooling treatment which set up high compressive stresses at the surface, and balancing tensile stresses in the center of the glass, thus increasing its strength. The result is a glass that is 5 times stronger than ordinary glass. Heat strengthened glass is produced by a similar process to toughened glass, however, the strength developed is about half that of toughened glass, and its breakage resembles that of annealed glass. AKOS strongly recommends the use of Heat Strengthened Glass with the installation of any type of AKOS system.

- NOTE: Also; AKOS can do some mechanical operations on the glass in the direction of the customer's request. Connection holes, rodaj etc.
- Please contact us regarding Glass and PVB colours.
- The loads are made with wooden boxes for minimal deformation. The weights given are the weight of wooden boxes.

4 + 4 mm Laminated Glass

90 cm GLASS HEIGHT	LENGTH mm [W]	GLASS WIDTH [T]		WEIGHT [KG]	100 cm GLASS HEIGHT	LENGTH mm [W]	GLASS WIDTH [T]		WEIGHT [KG]	110 cm GLASS HEIGHT	LENGTH mm [W]	GLASS WIDTH [T]		WEIGHT [KG]
9010-8	100	8	(41,52-4)	1,8	10010-8	100	8	(41,52-4)	2	11010-8	100	8	(41,52-4)	2,2
9020-8	200	8	(41,52-4)	3,6	10020-8	200	8	(41,52-4)	4	11020-8	200	8	(41,52-4)	4,4
9030-8	300	8	(41,52-4)	5,4	10030-8	300	8	(41,52-4)	6	11030-8	300	8	(41,52-4)	6,6
9040-8	400	8	(41,52-4)	7,2	10040-8	400	8	(41,52-4)	8	11040-8	400	8	(41,52-4)	8,8
9050-8	500	8	(41,52-4)	9,0	10050-8	500	8	(41,52-4)	10	11050-8	500	8	(41,52-4)	11
9060-8	600	8	(41,52-4)	10,8	10060-8	600	8	(41,52-4)	12	11060-8	600	8	(41,52-4)	13,2
9070-8	700	8	(41,52-4)	12,6	10070-8	700	8	(41,52-4)	14	11070-8	700	8	(41,52-4)	15,4
9080-8	800	8	(41,52-4)	14,4	10080-8	800	8	(41,52-4)	16	11080-8	800	8	(41,52-4)	17,6
9090-8	900	8	(41,52-4)	16,2	10090-8	900	8	(41,52-4)	18	11090-8	900	8	(41,52-4)	19,8
90100-8	1000	8	(41,52-4)	18,0	100100-8	1000	8	(41,52-4)	20	110100-8	1000	8	(41,52-4)	22
90110-8	1100	8	(41,52-4)	19,8	100110-8	1100	8	(41,52-4)	22	110110-8	1100	8	(41,52-4)	24,2
90120-8	1200	8	(41,52-4)	21,6	100120-8	1200	8	(41,52-4)	24	110120-8	1200	8	(41,52-4)	26,4

6 + 6 mm Laminated Glass

90 cm GLASS HEIGHT	LENGTH mm [W]	GLASS WIDTH [T]		WEIGHT [KG]	100 cm GLASS HEIGHT	LENGTH mm [W]	GLASS WIDTH [T]		WEIGHT [KG]	110 cm GLASS HEIGHT	LENGTH mm [W]	GLASS WIDTH [T]		WEIGHT [KG]
901012	100	12	(61,52-6)	2,7	1001012	100	12	(61,52-6)	3	1101012	100	12	(61,52-6)	3,3
902012	200	12	(61,52-6)	5,4	1002012	200	12	(61,52-6)	6	1102012	200	12	(61,52-6)	6,6
903012	300	12	(61,52-6)	8,1	1003012	300	12	(61,52-6)	9	1103012	300	12	(61,52-6)	9,9
904012	400	12	(61,52-6)	10,8	1004012	400	12	(61,52-6)	12	1104012	400	12	(61,52-6)	13,2
905012	500	12	(61,52-6)	13,5	1005012	500	12	(61,52-6)	15	1105012	500	12	(61,52-6)	16,5
906012	600	12	(61,52-6)	16,2	1006012	600	12	(61,52-6)	18	1106012	600	12	(61,52-6)	19,8
907012	700	12	(61,52-6)	18,9	1007012	700	12	(61,52-6)	21	1107012	700	12	(61,52-6)	23,1
908012	800	12	(61,52-6)	21,6	1008012	800	12	(61,52-6)	24	1108012	800	12	(61,52-6)	26,4
909012	900	12	(61,52-6)	24,3	1009012	900	12	(61,52-6)	27	1109012	900	12	(61,52-6)	29,7
9010012	1000	12	(61,52-6)	27	10010012	1000	12	(61,52-6)	30	11010012	1000	12	(61,52-6)	33
9011012	1100	12	(61,52-6)	29,7	10011012	1100	12	(61,52-6)	33	11011012	1100	12	(61,52-6)	36,3
9012012	1200	12	(61,52-6)	32,4	10012012	1200	12	(61,52-6)	36	11012012	1200	12	(61,52-6)	39,6

8 + 8 mm Laminated Glass

90 cm GLASS HEIGHT	LENGTH mm [W]	GLASS WIDTH [T]		WEIGHT [KG]	100 cm GLASS HEIGHT	LENGTH mm [W]	GLASS WIDTH [T]		WEIGHT [KG]	110 cm GLASS HEIGHT	LENGTH mm [W]	GLASS WIDTH [T]		WEIGHT [KG]
901016	100	16	(81,52-8)	3,6	1001016	100	16	(81,52-8)	4	1101016	100	16	(81,52-8)	4,4
902016	200	16	(81,52-8)	7,2	1002016	200	16	(81,52-8)	8	1102016	200	16	(81,52-8)	8,8
903016	300	16	(81,52-8)	10,8	1003016	300	16	(81,52-8)	12	1103016	300	16	(81,52-8)	13,2
904016	400	16	(81,52-8)	14,4	1004016	400	16	(81,52-8)	16	1104016	400	16	(81,52-8)	17,6
905016	500	16	(81,52-8)	18	1005016	500	16	(81,52-8)	20	1105016	500	16	(81,52-8)	22
906016	600	16	(81,52-8)	21,6	1006016	600	16	(81,52-8)	24	1106016	600	16	(81,52-8)	26,4
907016	700	16	(81,52-8)	25,2	1007016	700	16	(81,52-8)	28	1107016	700	16	(81,52-8)	30,8
908016	800	16	(81,52-8)	28,8	1008016	800	16	(81,52-8)	32	1108016	800	16	(81,52-8)	35,2
909016	900	16	(81,52-8)	32,4	1009016	900	16	(81,52-8)	36	1109016	900	16	(81,52-8)	39,6
9010016	1000	16	(81,52-8)	36	10010016	1000	16	(81,52-8)	40	11010016	1000	16	(81,52-8)	44
9010016	1100	16	(81,52-8)	39,6	10011016	1100	16	(81,52-8)	44	11011016	1100	16	(81,52-8)	48,4
9012016	1200	16	(81,52-8)	43,2	10012016	1200	16	(81,52-8)	48	11012016	1200	16	(81,52-8)	52,8

10 + 10 mm Laminated Glass

90 cm GLASS HEIGHT	LENGTH mm [W]	GLASS WIDTH [T]		WEIGHT [KG]	90 cm GLASS HEIGHT	LENGTH mm [W]	GLASS WIDTH [T]		WEIGHT [KG]	90 cm GLASS HEIGHT	LENGTH mm [W]	GLASS WIDTH [T]		WEIGHT [KG]
9010-20	100	20	-101,521	4,5	10010-20	100	20	-101,521	5	11010-20	100	20	-101,521	5,5
9020-20	200	20	-101,521	9	10020-20	200	20	-101,521	10	11020-20	200	20	-101,521	11
9030-20	300	20	-101,521	13,5	10030-20	300	20	-101,521	15	11030-20	300	20	-101,521	16,5
9040-20	400	20	-101,521	18	10040-20	400	20	-101,521	20	11040-20	400	20	-101,521	22
9050-20	500	20	-101,521	22,5	10050-20	500	20	-101,521	25	11050-20	500	20	-101,521	27,5
9060-20	600	20	-101,521	27	10060-20	600	20	-101,521	30	11060-20	600	20	-101,521	33
9070-20	700	20	-101,521	31,5	10070-20	700	20	-101,521	35	11070-20	700	20	-101,521	38,5
9080-20	800	20	-101,521	36	10080-20	800	20	-101,521	40	11080-20	800	20	-101,521	44
9090-20	900	20	-101,521	40,5	10090-20	900	20	-101,521	45	11090-20	900	20	-101,521	49,5
90100-20	1000	20	-101,521	45	100100-20	1000	20	-101,521	50	110100-20	1000	20	-101,521	55
90100-20	1100	20	-101,521	49,5	100110-20	1100	20	-101,521	55	110110-20	1100	20	-101,521	60,5
90120-20	1200	20	-101,521	54	100120-20	1200	20	-101,521	60	110120-20	1200	20	-101,521	66